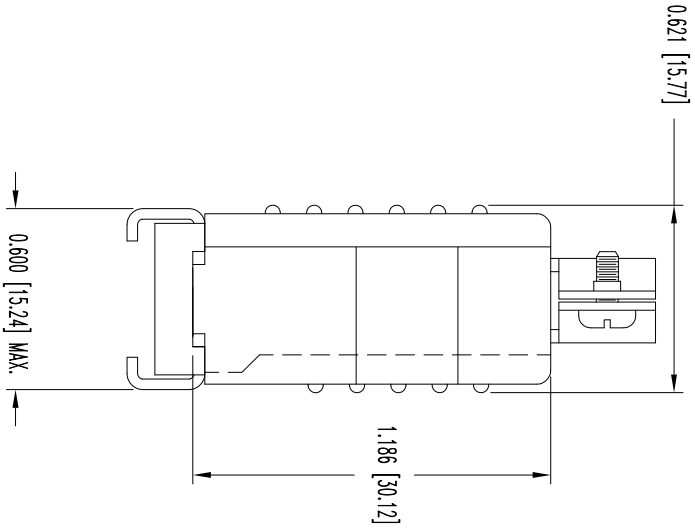
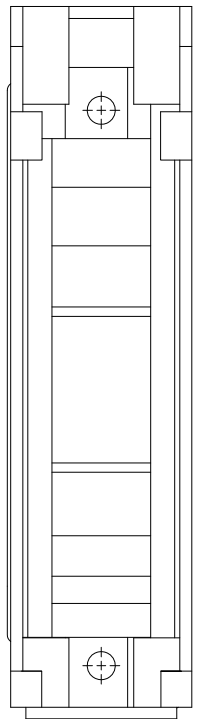
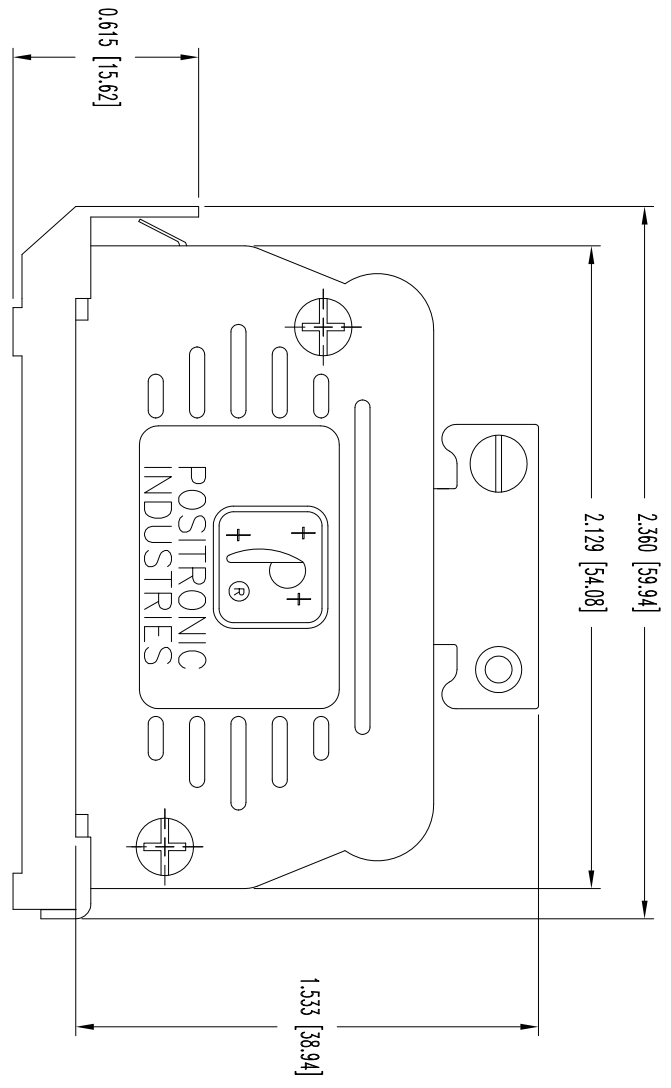


THIS DRAWING CONTAINS INFORMATION PROPRIETARY TO POSITRONIC INDUSTRIES INC. THE DATA ON THIS DRAWING TO BE RELEASED SINCE THE TECHNICAL INFORMATION IS GIVEN FREE OF CHARGE. THE USER EMPLOYS SUCH INFORMATION AT HIS OWN DISCRETION AND ASSUMES ALL RESPONSIBILITY FOR ANY DAMAGE OR RESULTS OBTAINED OR DAMAGES INCURRED FROM USE OF SUCH INFORMATION IN WHOLE OR IN PART.

SKI2914

DATE	REV	REVISION RECORD	APP	DR	CK
11-1	NC	ECO 34662	COLB	BE	COLB
8-9	A	ECO 40370	COLB	BE	COLB



CONNECTOR MOUNTING SCREW
2X

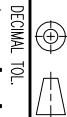
NOTES:

1. MATERIALS AND FINISHES:
HOOD AND HOOD COVER: GLASS-FILLED POLYESTER, 94V-0, COLOR BLACK.
LOCKARM LEVER: STEEL, NICKEL PLATE.
LOCKARM SPRING: BERYLLIUM COPPER, NICKEL PLATE.
CABLE CLAMP: STEEL, NICKEL PLATE.
CABLE CLAMP SCREW: BRASS, ZINC PLATE WITH CHROMATE SEAL.
COVER AND MOUNTING SCREWS: STEEL, ZINC PLATE WITH CHROMATE SEAL.
2. DETAILED PRODUCT, ELECTRICAL, AND MECHANICAL INFORMATION IS AVAILABLE IN THE LATEST D-SUBMINIATURE ACCESSORIES PRODUCT PUBLICATION. VISIT CONNECTPOSITRONIC.COM/PRODUCTS/58/D-SUBMINIATUREACCESSORIES OR CONNECTPOSITRONIC.COM.
3. ACCESSORY IS COMPLIANT TO THE CURRENT ROHS DIRECTIVE.
4. DIMENSIONS ARE IN INCHES[MILLIMETERS].



POSITRONIC INDUSTRIES INC.
www.connectpositronic.com

FSC# 28198



ANGULAR TOL. ± 5°

DECIMAL TOL. ± 0.015 [0.38]

D HOOD
SCALE: N.T.S.
DRAWN BY: B. EVANS
APPROVED BY: COLB

TITLE: D25000,V10/AA

DATE: 11-1-11
DRAWING NUMBER: SKI2914
REV.: A