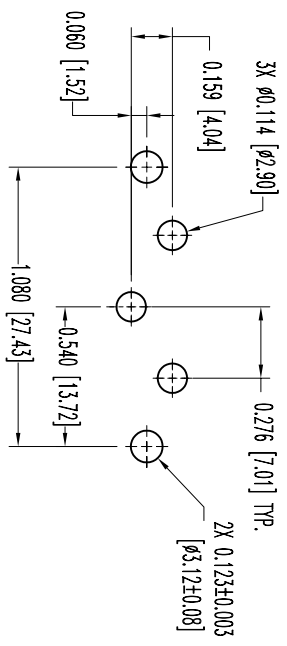
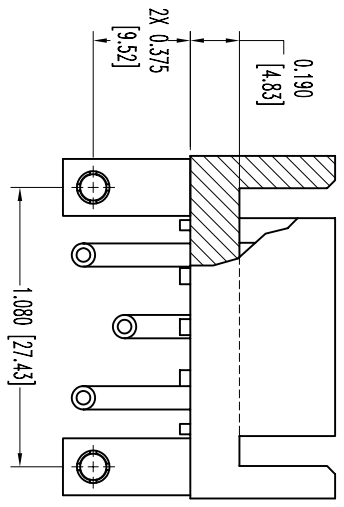
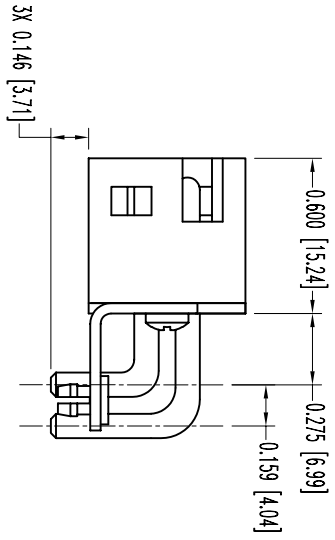
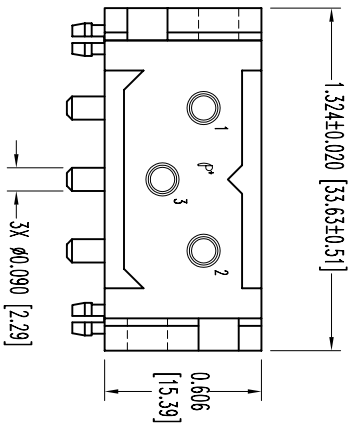


POSITRONIC INDUSTRIES BELIEVES THE DATA ON THIS DRAWING TO BE RELIABLE SINCE THE TECHNICAL INFORMATION IS GIVEN FREE OF CHARGE, THE USER EMPLOYS SUCH INFORMATION AT HIS OWN DISCRETION. POSITRONIC INDUSTRIES ASSUMES NO LIABILITY OR RESPONSIBILITY FOR RESULTS OBTAINED OR DAMAGES INCURRED FROM USE OF SUCH INFORMATION IN WHOLE OR IN PART.




CONTACT HOLE PATTERN

- NOTES:
1. MATERIALS AND FINISHES:  
INSULATOR: GLASS FILLED POLYESTER, UI 94V-0, COLOR BLUE.  
CONTACTS: PRECISION MACHINED COPPER ALLOY WITH GOLD FLASH OVER NICKEL PLATE.  
MOUNTING BRACKETS: BRASS, TIN PLATE.  
PUSH FASTENERS: SPRING TEMPERED COPPER ALLOY, TIN PLATE.  
MOUNTING SCREWS: STEEL, TIN PLATE.
  2. ELECTRICAL CHARACTERISTICS:  
CONTACT CURRENT RATING: 40 AMPERES CONTINUOUS PER IEC 512-3, TEST 5b  
INITIAL CONTACT RESISTANCE: 0.001 OHMS MAXIMUM, PER IEC 512-2, TEST 2b.  
INSULATOR RESISTANCE: 5 G OHMS PER IEC 512-2, TEST 3a.  
WORKING VOLTAGE: 1.250 V, r.m.s.
  3. CONNECTORS ARE ROHS COMPLIANT PER ROHS DIRECTIVE 2002/95/EC OF 27 JAN 2003.
  4. TEMPERATURE RANGE: -55°C TO 125°C.
  5. DIMENSIONS ARE IN INCHES [MILLIMETERS].

DATE	REV	REVISION RECORD	APP	DR	CK
10-26-05	NC	ECO 24926	RCM	ME	TK
12-22-05	A	ECO 25247		YK	

SK6667



**POSITRONIC INDUSTRIES INC.**  
www.connectpositronic.com

DECIMAL TOL. ± 0.015 [0.38]	SCALE N.T.S.	DRAWN BY M. ENBA	TITLE PBB3WM4BNOA1/AA	DATE 10-26-05	DRAWING NUMBER SK6667
ANGULAR TOL. ± N/A		PCS SERIES		REV. A	