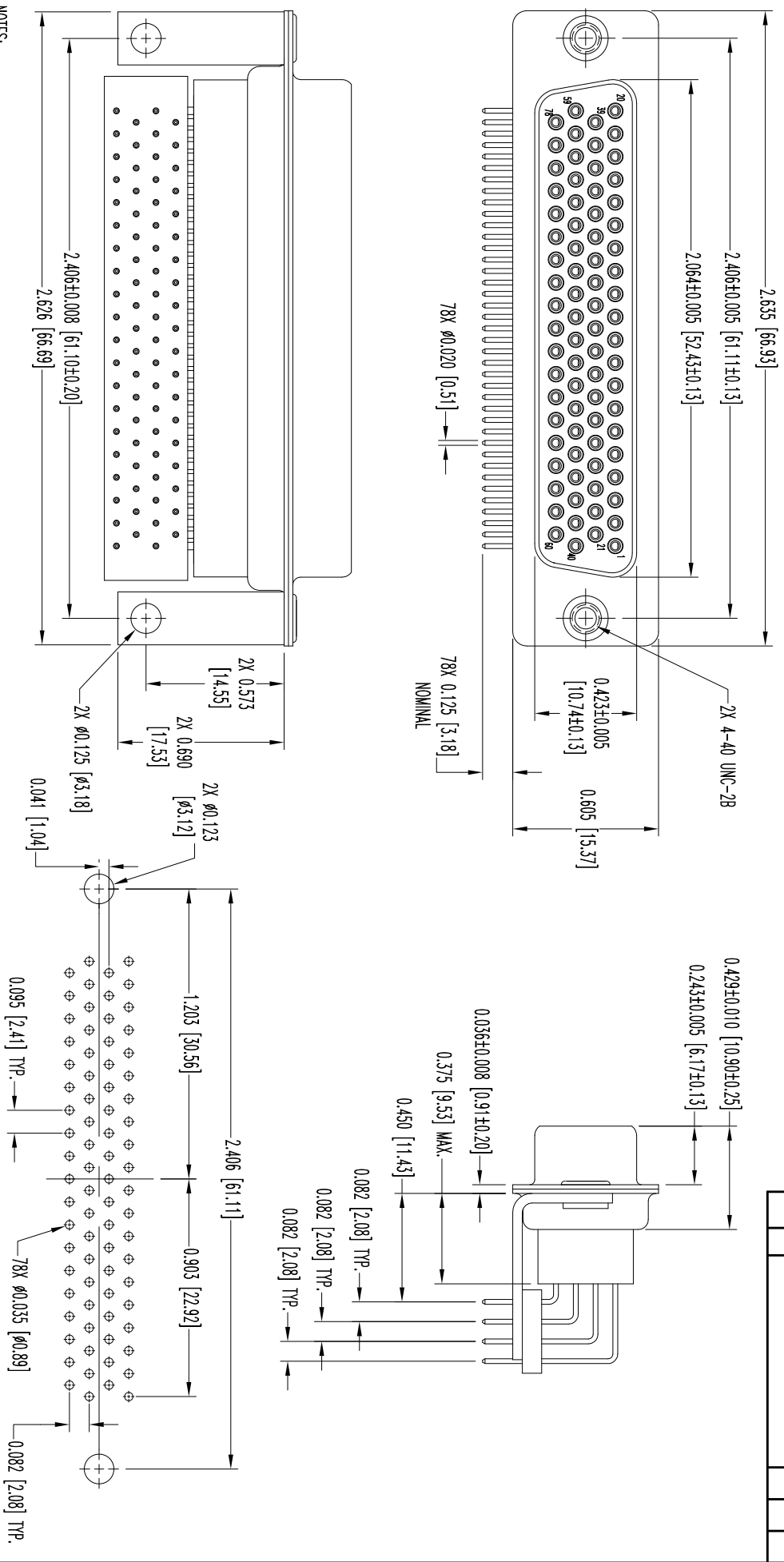


THIS DRAWING CONTAINS INFORMATION PROPRIETARY TO POSITRONIC AND ITS SUBSIDIARIES. POSITRONIC BELIEVES THE DATA ON THIS DRAWING TO BE RELIABLE. SINCE THE TECHNICAL INFORMATION IS GIVEN FREE OF CHARGE, THE USER ASSUMES ALL LIABILITY FOR THE USE OF THE INFORMATION AND RISK. POSITRONIC ASSUMES NO RESPONSIBILITY FOR RESULTS OBTAINED OR DAMAGES INCURRED FROM USE OF SUCH INFORMATION IN WHOLE OR IN PART.




CONTACT HOLE PATTERN

- NOTES:**
- 1. MATERIALS AND FINISHES:**
 INSULATORS: GLASS FILLED POLYESTER PER ASTM D5927, UL 94V-0, BLUE COLOR.
 CONTACTS: BRASS, GOLD FLASH OVER NICKEL FINISH.
 SHELLS: STEEL, ZINC PLATE WITH CHROMATE SEAL.
 ALIGNMENT BAR: GLASS FILLED POLYESTER, COLOR BLACK.
 MOUNTING BRACKETS: BRASS, ZINC PLATE WITH CHROMATE SEAL.
 THREADED RIVET: STEEL, ZINC PLATE WITH CHROMATE SEAL.
 - 2. DETAILED PRODUCT, ELECTRICAL, AND MECHANICAL INFORMATION IS AVAILABLE IN THE LATEST HIGH DENSITY D-SUBMINIATURE PRODUCT PUBLICATION. VISIT CONNECTPOSITRONIC.COM/PRODUCTS/59/HIGHDENSITYD-SUBMINIATURE OR CONNECTPOSITRONIC.COM.**
 - 3. CONNECTORS ARE COMPLIANT TO THE CURRENT ROHS DIRECTIVE.**
 - 4. DIMENSIONS ARE IN INCHES [MILLIMETERS].**

DATE	REV	REVISION/RECORD	APP	DR	CK
2-28	NC	ECO 34631	COLF	BE	COLF
6-11	A	ECO 39758	COLF	BE	COLF

SK12760



POSITRONIC INDUSTRIES INC.
www.connectpositronic.com

DECIMAL TOL. ± 0.015 [0.38]	DD SERIES	SCALE N.T.S.	DRAWN BY B. EVANS	DATE 10-25-11	DRAWING NUMBER SK12760	FSCM 28198
ANGULAR TOL. ± 5°	DD78S4R7000/AA		APPROVED BY COLE			REV. A