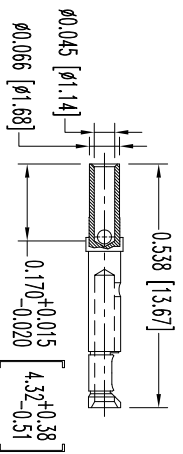
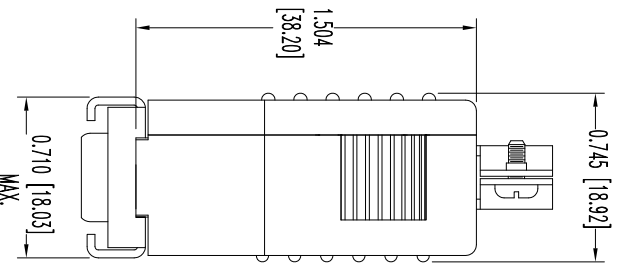
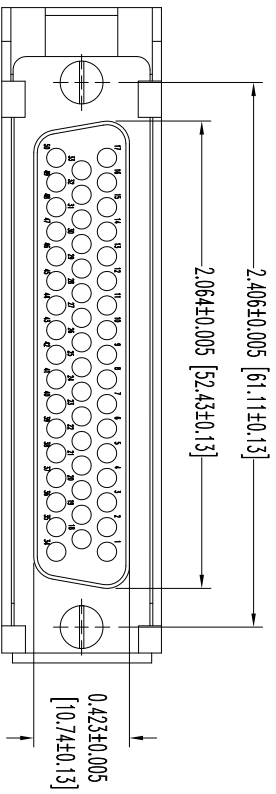
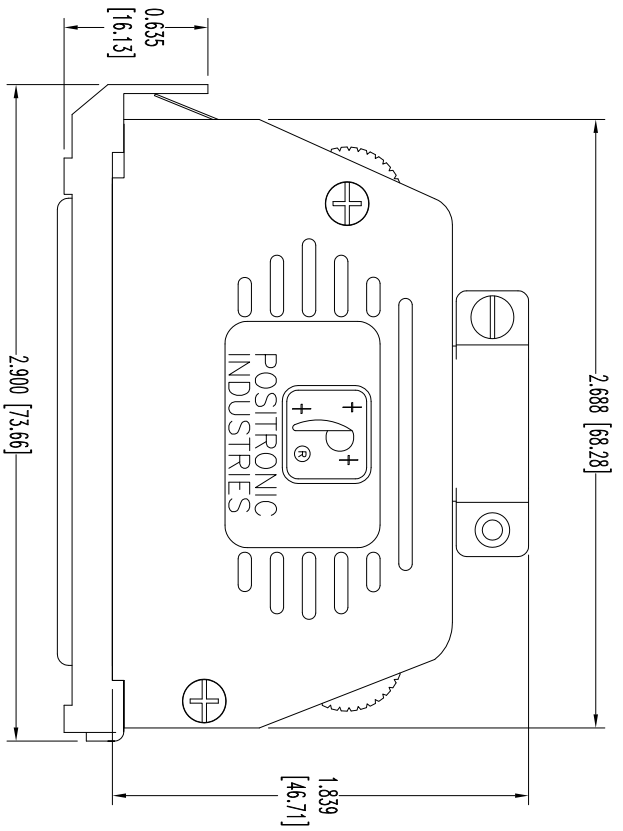


THIS DRAWING CONTAINS INFORMATION PROPRIETARY TO POSITRONIC INDUSTRIES. THE DATA ON THIS DRAWING TO BE RELEASED SINCE THE USER EMPLOYERS SUCH INFORMATION AT HIS OWN DISCRETION. RESULTS OBTAINED OR DAMAGES INCURRED FROM USE OF SUCH INFORMATION IN WHOLE OR IN PART.



50X FEMALE CONTACT
ENLARGED

- NOTES:
- MATERIALS AND FINISHES:
INSULATOR: GLASS FILLED DAP PER ASTM-D5948, SD6-F, UL 94V-0, COLOR: GREEN.
CONTACTS: PRECISION MACHINED COPPER ALLOY, GOLD FLASH OVER NICKEL PLATE.
SHELLS: STEEL, ZINC PLATE WITH CHROMATE SEAL.
HOOD: GLASS FILLED POLYESTER, UL 94V-0, COLOR: BLACK.
LOCK LEVER AND CABLE CLAMPS: STEEL WITH NICKEL PLATE.
 - DETAILED PRODUCT, MECHANICAL, AND ELECTRICAL INFORMATION IS AVAILABLE IN THE LATEST STANDARD DENSITY D-SUB PRODUCT PUBLICATION. VISIT CONNECTPOSITRONIC.COM/PRODUCTS/45/STANDARDENSITYD-SUB OR CONNECTPOSITRONIC.COM.
 - CONNECTORS ARE ROHS COMPLIANT PER CURRENT DIRECTIVE.
 - DIMENSIONS ARE IN INCHES [MILLIMETERS].

| DATE | REV | REVISION RECORD | APP | DR | CK |
|---------|-----|-----------------|------|----|------|
| 9-30-13 | NC | ECO 40918 | COLB | BS | COLB |
| | | | | | |
| | | | | | |
| | | | | | |

SK15411

POSITRONIC INDUSTRIES INC.
www.connectpositronic.com

| | | | |
|-----------------------------|-------------------------------|----------------------|------------|
| DECIMAL TOL. ± 0.015 [0.38] | SCALE N.T.S. | DRAWN BY B SHELLARDY | FSCM 28198 |
| ANGULAR TOL. ± 5° | TITLE RD SERIES | APPROVED BY COLB | |
| DATE 9-30-13 | DRAWING NUMBER RD50S10JVL0/AA | REV. NC | |