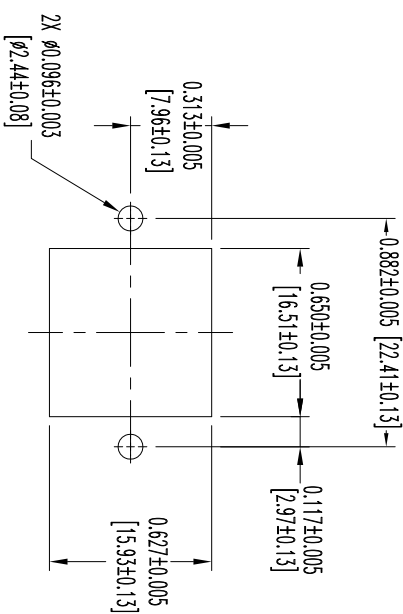
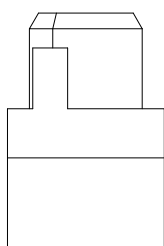
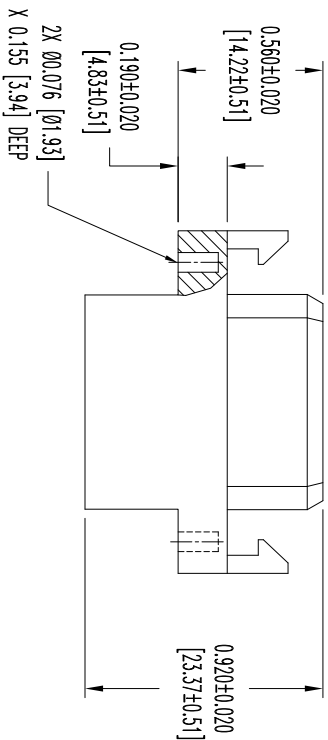
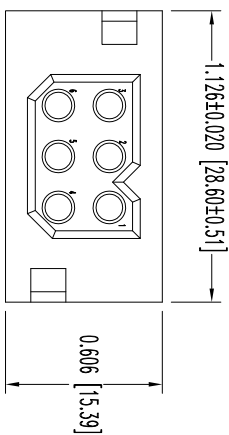


THIS DRAWING CONTAINS INFORMATION PROPRIETARY TO POSITRONIC AND ITS SUBSIDIARIES. POSITRONIC BELIEVES THE DATA ON THIS DRAWING TO BE RELIABLE, SINCE THE USER HAS NOT SHOWN REASONABLE CAUTION IN OBTAINING USER EVALUATIONS AND RESULTS. POSITRONIC ASSUMES NO RESPONSIBILITY FOR RESULTS OBTAINED OR DAMAGES INCURRED FROM USE OF SUCH INFORMATION IN WHOLE OR IN PART.



PANEL CUTOUT

NOTES:

1. MATERIALS AND FINISHES:

INSULATOR: GLASS FILLED POLYESTER, UL 94V-0, COLOR: BLUE.

2. DETAILED PRODUCT, MECHANICAL, AND ELECTRICAL INFORMATION IS AVAILABLE IN THE LATEST PCS PRODUCT PUBLICATION. VISIT

CONNECTPOSITRONIC.COM/PRODUCTS/20/POWERCONNECTIONSYSTEMS OR
CONNECTPOSITRONIC.COM.

3. CONNECTORS ARE COMPLIANT TO THE CURRENT ROHS DIRECTIVE

4. DIMENSIONS ARE IN INCHES [MILLIMETERS].

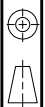
DATE	REV	REVISION RECORD	APP	DR	CK
12-21-12	NC	ECO 38085	TK	LD	TK

SK14745



POSITRONIC INDUSTRIES INC.
www.connectpositronic.com

FSCM 28198



DECIMAL TOL.
± 0.015 [0.38]

PCS SERIES

SCALE
N.T.S.

DRAWN BY
I. OWENS

TITLE

PLB06F1000/AA

APPROVED BY
T. KEPPLER

ANGULAR TOL.
± 5°

DATE
12-21-12

DRAWING NUMBER
SK14745

REV.
NC