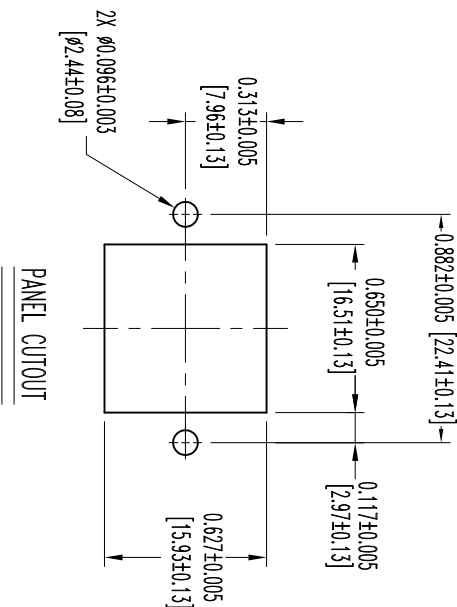
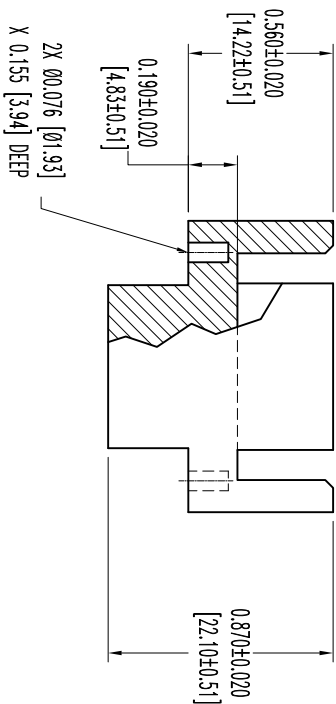
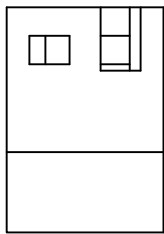
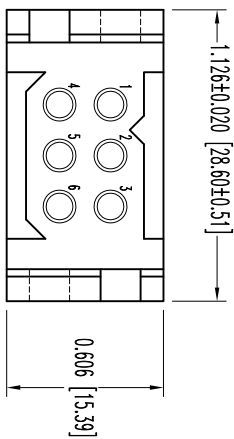


THIS DRAWING CONTAINS INFORMATION PROPRIETARY TO POSITRONIC AND ITS SUBSIDIARIES. POSITRONIC BELIEVES THE DATA ON THIS DRAWING TO BE RELIABLE, SINCE THE USER HAS TAKEN THE NECESSARY PRECAUTIONS TO VERIFY THE TECHNICAL INFORMATION SHOWN HEREON. POSITRONIC ASSUMES NO RESPONSIBILITY FOR RESULTS OBTAINED OR DAMAGES INCURRED FROM USE OF SUCH INFORMATION IN WHOLE OR IN PART.



PANEL CUTOUT

DATE	REV	REVISION/RECORD	APP	DR	CK
3-23-06	NC	ECO 25677	RCW	YK	TK
5-09	A	ECO 33998	COLM	BS	COLM

SK7202

NOTES:

1. MATERIALS AND FINISHES:

INSULATOR: GLASS FILLED POLYESTER, UL 94V-0, COLOR: BLUE.

2. DETAILED PRODUCT, MECHANICAL, AND ELECTRICAL INFORMATION IS AVAILABLE IN THE LATEST PCS PRODUCT PUBLICATION. VISIT [CONNECTPOSITRONIC.COM/PRODUCTS/20/POWERCONNECTIONSYSTEMS](http://CONNECTPOSITRONIC.COM/PRODUCTS/20/POWERCONNECTIONSYSTEMS) OR [CONNECTPOSITRONIC.COM](http://CONNECTPOSITRONIC.COM).

3. CONNECTORS ARE ROHS COMPLIANT PER ROHS DIRECTIVE 2002/95/EC OF 27 JAN 2003.

4. DIMENSIONS ARE IN INCHES [MILLIMETERS].

		<b>POSITRONIC INDUSTRIES INC.</b> <a href="http://www.connectpositronic.com">www.connectpositronic.com</a>		<b>FSC# 28198</b>	
		PCS SERIES	SCALE N.T.S.	DRAWN BY YK	
DECIMAL TOL. $\pm 0.015$ [0.38]	TITLE <b>PLB06M1000/AA</b>	APPROVED BY <b>R WILLIAMS</b>	DATE <b>3-23-06</b>	DRAWING NUMBER <b>SK7202</b>	REV. <b>A</b>
ANGULAR TOL. $\pm 5^\circ$					