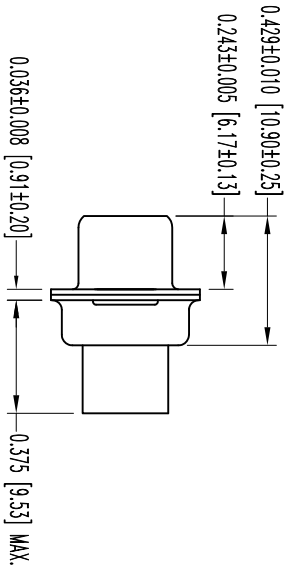
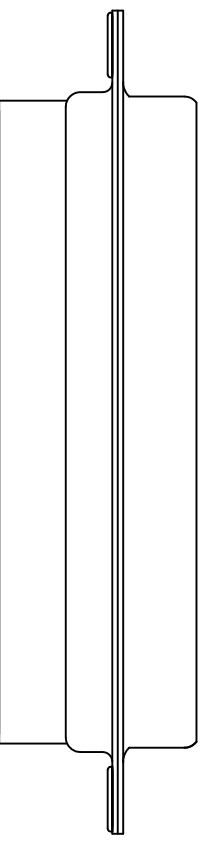
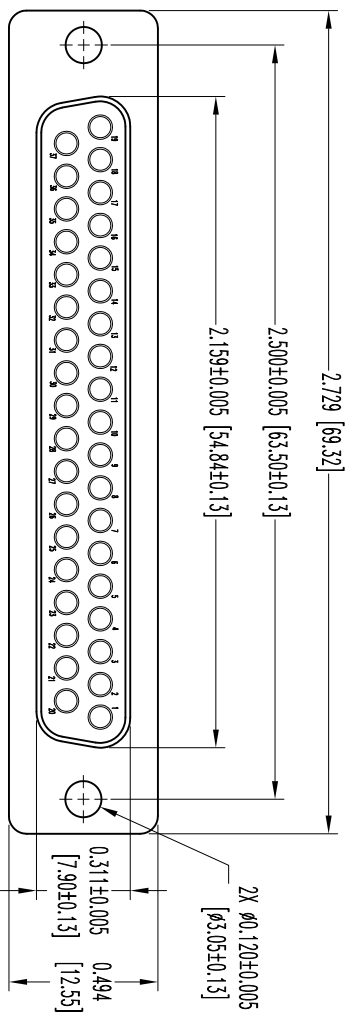


THIS DRAWING CONTAINS INFORMATION PROPRIETARY TO POSITRONIC AND IS SUBJECT TO THE SAME RESTRICTIONS AND CONDITIONS AS ANY OTHER DRAWING TO BE HELD BY THE USER. THE USER EMPLOYING SUCH INFORMATION AT HIS OWN DISCRETION ASSUMES ALL LIABILITY FOR ANY DAMAGE OR INJURY TO PERSONS OR PROPERTY, OR FOR ANY LOSS OF PROFITS, BUSINESS, OR REPUTATION, OR FOR ANY SUCH INFORMATION IN WHOLE OR IN PART.



**NOTES:**

1. MATERIALS AND FINISHES:  
INSULATOR: GLASS FILLED DAP PER ASTM-D-5948, S06-F, UL 94V-0, GREEN COLOR.  
SHELLS: STEEL, ZINC PLATE WITH CHROMATE SEAL.
2. DETAILED PRODUCT, ELECTRICAL, AND MECHANICAL INFORMATION IS AVAILABLE IN THE LATEST STANDARD DENSITY D-SUB PRODUCT PUBLICATION. VISIT [CONNECTPOSITRONIC.COM/PRODUCTS/45/STANDARDENSITY-D-SUBMINIATURE](http://CONNECTPOSITRONIC.COM/PRODUCTS/45/STANDARDENSITY-D-SUBMINIATURE) OR [CONNECTPOSITRONIC.COM](http://CONNECTPOSITRONIC.COM).
3. CONNECTORS ARE ROHS COMPLIANT PER ROHS DIRECTIVE 2002/95/EC OF 27 JAN 2003.
4. DIMENSIONS ARE IN INCHES [MILLIMETERS].

| DATE | REV | REVISION RECORD | APP  | DR | CK   |
|------|-----|-----------------|------|----|------|
| 1-10 | NC  | ECO 34978       | COLL | ME | COLL |
|      |     |                 |      |    |      |
|      |     |                 |      |    |      |

SK13426



**POSITRONIC INDUSTRIES INC.**  
www.connectpositronic.com

|                                |                 |                |                     |            |
|--------------------------------|-----------------|----------------|---------------------|------------|
| DECIMAL TOL.<br>± 0.015 [0.38] | SCALE<br>N.T.S. | DRAWN BY<br>ME | APPROVED BY<br>COLL | FSC# 28198 |
|--------------------------------|-----------------|----------------|---------------------|------------|

|                      |                    |                 |                           |            |
|----------------------|--------------------|-----------------|---------------------------|------------|
| ANGULAR TOL.<br>± 5° | TITLE<br>RD SERIES | DATE<br>1-10-12 | DRAWING NUMBER<br>SK13426 | REV.<br>NC |
|----------------------|--------------------|-----------------|---------------------------|------------|

RD37S00000/AA