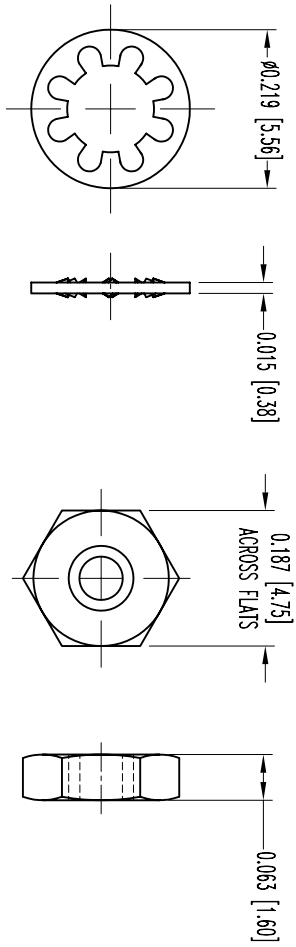


POSITRONIC INDUSTRIES BELIEVES THE DATA ON THIS DRAWING TO BE RELIABLE. SINCE THE TECHNICAL INFORMATION IS GIVEN FREE OF CHARGE, THE USER EMPLOYS SUCH INFORMATION AT HIS OWN DISCRETION AND POSITRONIC INDUSTRIES ASSUMES NO LIABILITY OR RESPONSIBILITY FOR RESULTS OBTAINED OR DAMAGES INCURRED FROM USE OF SUCH INFORMATION IN WHOLE OR IN PART.

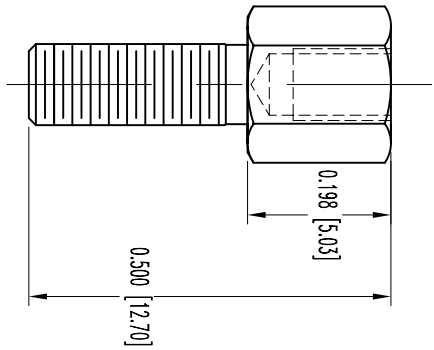
DATE	REV	REVISION RECORD	APP	DR	CK
7-28-05	NC	ECO 24424		YK	

SK6382

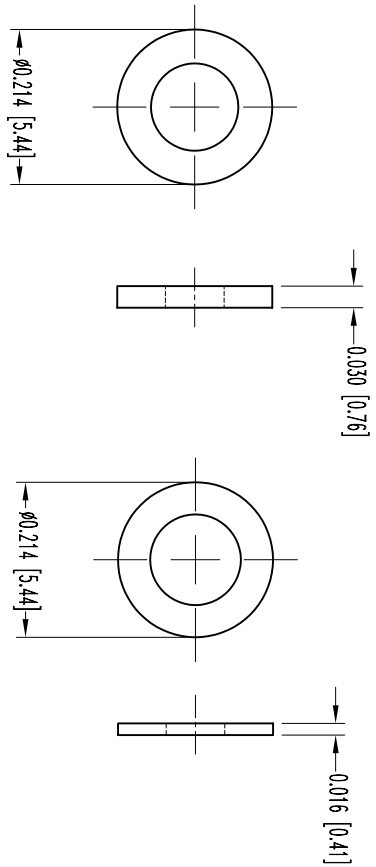
LOCKWASHER



HEX NUT




T2 JACKSCREWS



WASHER

WASHER

- NOTES:
1. MATERIALS AND FINISHES:
JACKSCREWS: BRASS, 0.000050 [1.27μ] GOLD OVER COPPER PLATE.
HEX NUTS: BRASS, 0.000050 [1.27μ] GOLD OVER COPPER PLATE.
LOCKWASHERS: BRONZE, 0.000050 [1.27μ] GOLD OVER COPPER PLATE.
WASHERS: BRASS, 0.000050 [1.27μ] GOLD OVER COPPER PLATE.
 2. THIS KIT CONSIST OF: (2) JACKSCREWS, (2) LOCKWASHERS, (2) 0.030 [0.76] THICK WASHERS, (2) 0.016 [0.41] THICK WASHERS, AND (2) HEX NUTS.
 3. DIMENSIONS ARE IN INCHES (MILLIMETERS).



POSITRONIC INDUSTRIES INC.
www.connectpositronic.com

DECIMAL TOL.	SCALE	DRAWN BY	REV.
±0.015 (0.38)	N.T.S.	YK	NC
TITLE		REV.	
SND SERIES		SND0000012G	
DATE		DRAWING NUMBER	
7-28-05		SK6382	