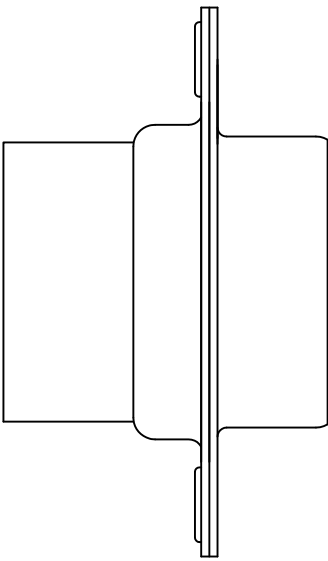
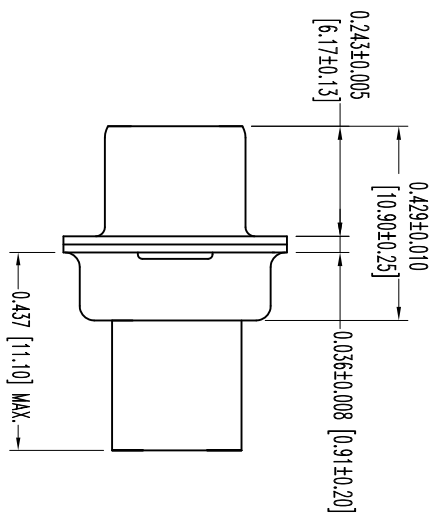
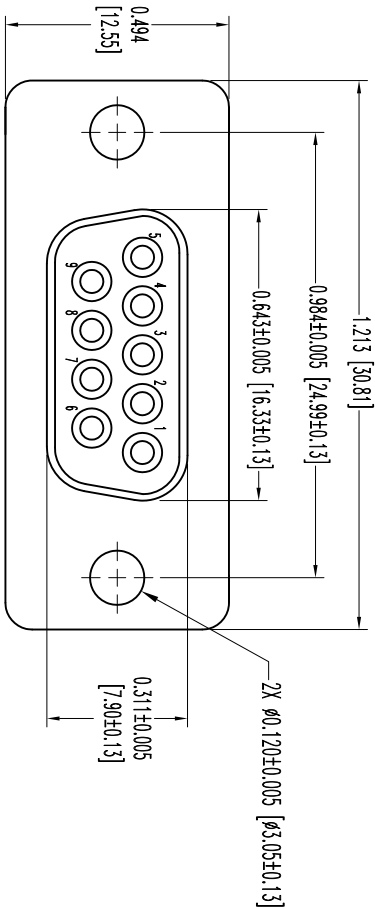


THIS DRAWING CONTAINS INFORMATION PROPRIETARY TO POSITRONIC INDUSTRIES INC. AND IS NOT TO BE REPRODUCED OR TRANSMITTED IN ANY FORM OR BY ANY MEANS, ELECTRONIC OR MECHANICAL, INCLUDING PHOTOCOPYING, RECORDING, OR BY ANY INFORMATION STORAGE AND RETRIEVAL SYSTEM. THE DATA ON THIS DRAWING TO BE RELIABLE. SINCE THE TECHNICAL INFORMATION IS GIVEN FREE OF CHARGE, THE USER EMPLOYS SUCH INFORMATION AT HIS OWN DISCRETION AND ASSUMES ALL RESPONSIBILITY FOR ANY INJURY, LOSS, DAMAGE, OR CONSEQUENCE ARISING FROM THE USE OF SUCH INFORMATION IN WHOLE OR IN PART.

SK7180

DATE	REV	REVISION RECORD	APP	DR	OK
3-20-06	NC	ECO 25661	RCW	YK	TK
6-28-06	A	ECO 26249	RCW	YK	TK
10-28-11	B	ECO 34638	COLL	TL	COLL



NOTES

1. MATERIAL AND FINISHES:  
INSULATOR: GLASS FILLED NYLON RESIN, UL 94V-0, BLACK COLOR.
2. DETAILED PRODUCT, MECHANICAL, AND ELECTRICAL INFORMATION IS AVAILABLE IN THE LATEST STANDARD DENSITY D-SUB PRODUCT PUBLICATION, VISIT [CONNECTPOSITRONIC.COM/PRODUCTS/45/STANDARD-DENSITY-D-SUB-PRODUCT PUBLICATION](http://CONNECTPOSITRONIC.COM/PRODUCTS/45/STANDARD-DENSITY-D-SUB-PRODUCT-PUBLICATION).
3. CONNECTORS ARE ROHS COMPLIANT PER ROHS DIRECTIVE 2002/95/EC OF 27 JAN 2003.
4. DIMENSIONS ARE IN INCHES [MILLIMETERS].



**POSITRONIC INDUSTRIES INC.**  
[www.connectpositronic.com](http://www.connectpositronic.com) **FSCM 28198**

DECIMAL TOL.	SD SERIES	SCALE	DRAWN BY	DATE	DRAWING NUMBER	REV.
± 0.015 [0.38]		N.T.S.	YK	3-20-06	SK7180	B
ANGULAR TOL.						
± 5°						