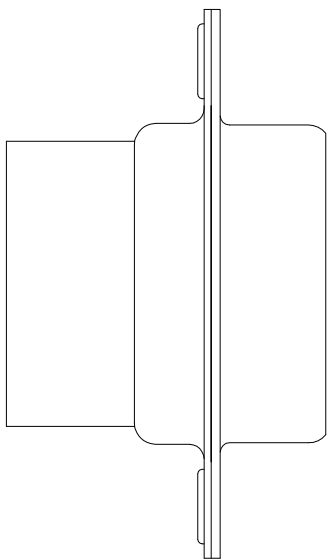
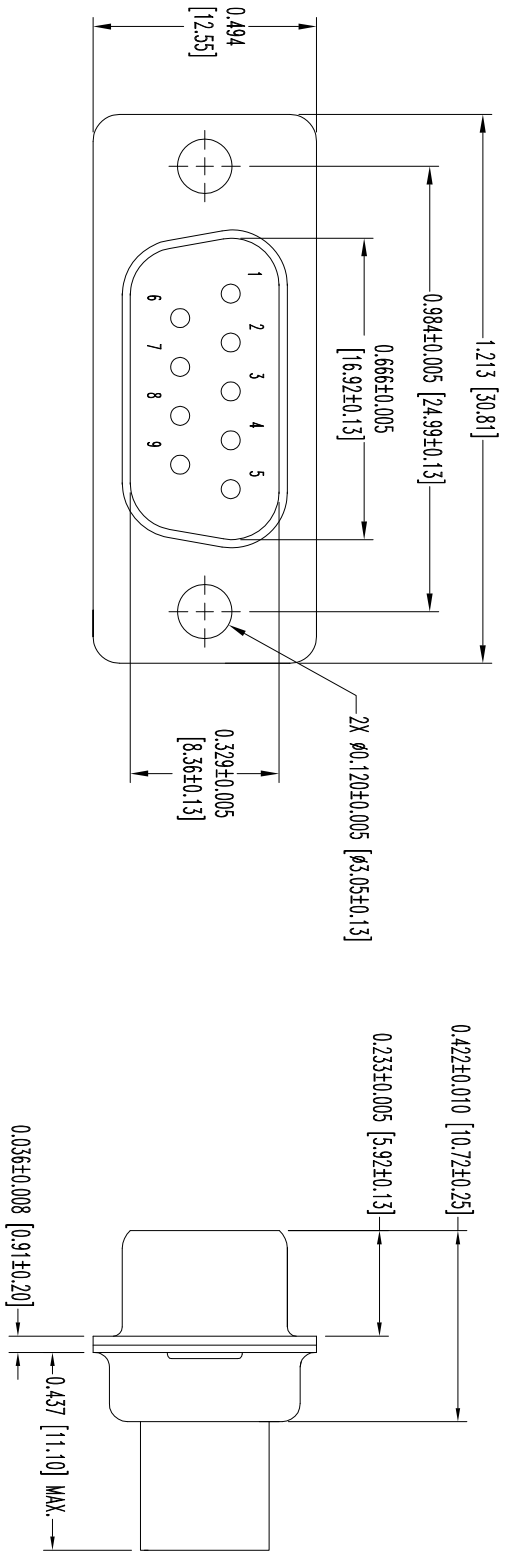


THIS DRAWING CONTAINS INFORMATION PROPRIETARY TO POSITRONIC AND IS SUBJECT TO THE TERMS AND CONDITIONS OF THE LICENSE AGREEMENT. ANY REUSE OR REPRODUCTION OF THIS DRAWING WITHOUT THE WRITTEN PERMISSION OF POSITRONIC IS STRICTLY PROHIBITED. THE USER EMPLOYS SUCH INFORMATION AT HIS OWN DISCRETION. POSITRONIC ASSUMES NO LIABILITY FOR DAMAGES, INCLUDING CONSEQUENTIAL DAMAGES, ARISING FROM THE USE OF SUCH INFORMATION IN WHOLE OR IN PART.

SK11276

DATE	REV	REVISION/RECORD	APP	DR	CK
1-07	NC	ECO 31921	COLF	BS	COLF
2-16	A	ECO 32118	TK	BS	TK



NOTES:

1. MATERIALS AND FINISHES:
INSULATOR: GLASS FILLED NYLON RESIN, UL 94V-0, COLOR: BLACK.
SHELLS: STEEL, ZINC PLATE WITH CHROMATE SEAL.
2. DETAILED PRODUCT, MECHANICAL, AND ELECTRICAL INFORMATION IS AVAILABLE IN THE LATEST STANDARD DENSITY D-SUB PRODUCT PUBLICATION, VISIT CONNECTPOSITRONIC.COM/PRODUCTS/45/STANDARDENSITY-D-SUBMINIATURE OR CONNECTPOSITRONIC.COM.
3. DIMENSIONS ARE IN INCHES [MILLIMETERS].



POSITRONIC INDUSTRIES INC.
www.connectpositronic.com
FSC# 28198

DECIMAL TOL. ± 0.015 [0.38]	SCALE N.T.S.	DRAWN BY B SHELLADY
ANGULAR TOL. ± 5°	TITLE SD SERIES	APPROVED BY S COLF

DATE 1-07-10	DRAWING NUMBER SK11276	REV. A
TITLE SD9M00000		