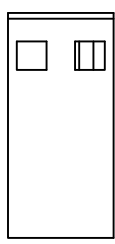
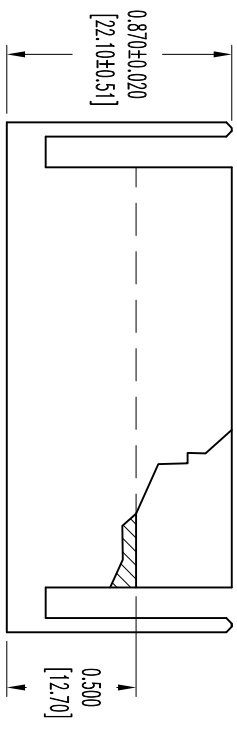
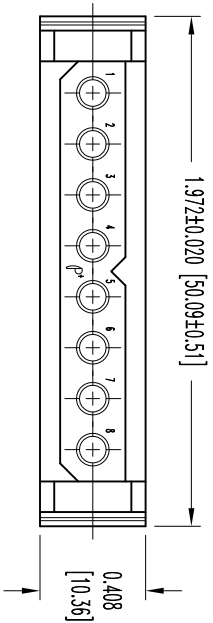


THIS DRAWING CONTAINS INFORMATION PROPRIETARY TO POSITRONIC AND ITS SUBSIDIARIES. POSITRONIC BELIEVES THE DATA ON THIS DRAWING TO BE RELIABLE. SINCE THE TECHNICAL INFORMATION IS GIVEN RELYER OF CONNECTIONS, USER ASSUMES ALL RESPONSIBILITY FOR THE DESIGN AND RISK. POSITRONIC ASSUMES NO RESPONSIBILITY FOR RESULTS OBTAINED OR DAMAGES INCURRED FROM USE OF SUCH INFORMATION IN WHOLE OR IN PART.



DATE	REV	REVISION RECORD	APP	DR	OK
3-8-12	NC	ECO 353339	COLE	MP	COLE

SK13875

- NOTES:
1. MATERIALS AND FINISHES:  
INSULATOR: GLASS FILLED POLYESTER, UL 94V-0, COLOR BLUE.
  2. DETAILED PRODUCT, MECHANICAL, AND ELECTRICAL INFORMATION IS AVAILABLE IN THE LATEST POWER CONNECTION SYSTEMS PRODUCT PUBLICATION. VISIT [CONNECTPOSITRONIC.COM/PRODUCTS/20/POWERCONNECTIONSYSTEMS](http://CONNECTPOSITRONIC.COM/PRODUCTS/20/POWERCONNECTIONSYSTEMS) OR [CONNECTPOSITRONIC.COM](http://CONNECTPOSITRONIC.COM).
  3. CONNECTORS ARE ROHS COMPLIANT PER ROHS DIRECTIVE 2002/95/EC OF 27 JAN 2003.
  4. DIMENSIONS ARE IN INCHES [MILLIMETERS].

		<b>POSITRONIC INDUSTRIES INC.</b> <a href="http://www.connectpositronic.com">www.connectpositronic.com</a>		<b>FSC# 28198</b>	
		<b>PCS SERIES</b>		<b>SCALE</b> N.T.S.	
<b>DECIMAL TOL.</b> $\pm 0.015$ [0.38]		<b>TITLE</b> PLA08M0000/AA		<b>DRAWN BY</b> MP	
<b>ANGULAR TOL.</b> $\pm 9^\circ$		<b>DATE</b> 3-8-12		<b>DRAWING NUMBER</b> SK13875	
				<b>APPROVED BY</b> COLE	
				<b>REV.</b> NC	