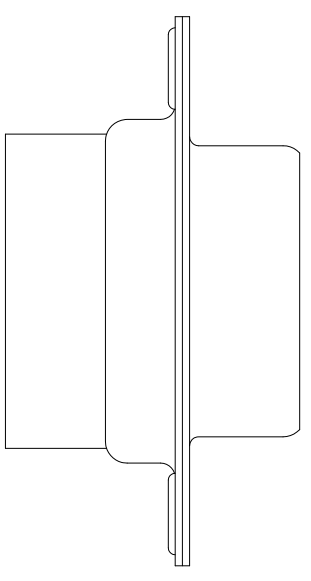
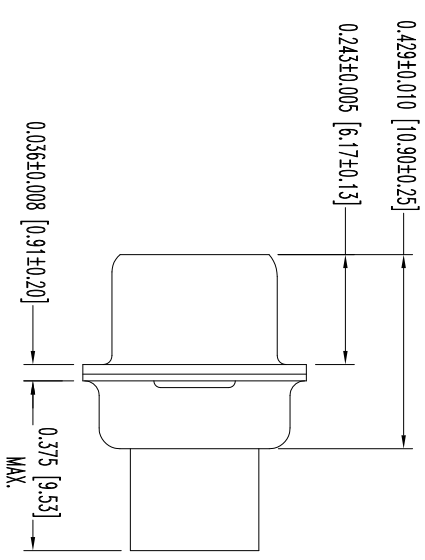
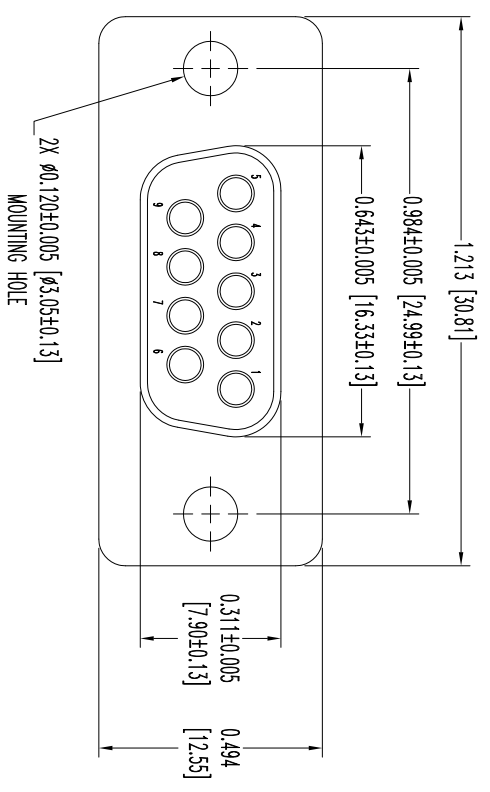


THIS DRAWING CONTAINS INFORMATION PROPRIETARY TO POSITRONIC INDUSTRIES INC. THE DATA ON THIS DRAWING TO BE RELEASED SINCE THE TECHNICAL INFORMATION IS GIVEN FREE OF CHARGE. THE USER EMPLOYS SUCH INFORMATION AT HIS OWN DISCRETION AND ASSUMES ALL LIABILITY FOR ANY INACCURACIES OR RESULTS OBTAINED OR DAMAGES INCURRED FROM USE OF SUCH INFORMATION IN WHOLE OR IN PART.

SK15225

DATE	REV	REVISION/RECORD	APP	DR	CK
7-16	13	NC	ECO	40134	COLB



- NOTES:
1. MATERIALS AND FINISHES:
INSULATOR: GLASS FILLED DAP PER ASTM-D5948, SDG-F, UL 94V-0, COLOR: GREEN.
SHELLS: STEEL, TIN PLATE.
 2. DETAILED PRODUCT, MECHANICAL, AND ELECTRICAL INFORMATION IS AVAILABLE IN THE LATEST STANDARD DENSITY D-SUB PRODUCT PUBLICATION.
VISIT CONNECTPOSITRONIC.COM/PRODUCTS/45/STANDARDENSITYD-SUBMINIATURE OR CONNECTPOSITRONIC.COM.
 3. DIMENSIONS ARE IN INCHES [MILLIMETERS].

POSITRONIC INDUSTRIES INC.
www.connectpositronic.com

RD SERIES	SCALE	DRAWN BY	FSCM 28198
	N.T.S.	MP	
		APPROVED BY	COLB

DATE	DRAWING NUMBER	REV.
7-16-13	SK15225	NC

DECIMAL TOL.	ANGULAR TOL.
± 0.015 [0.38]	± 5°