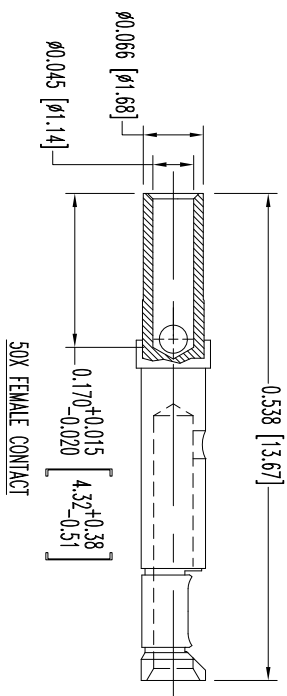
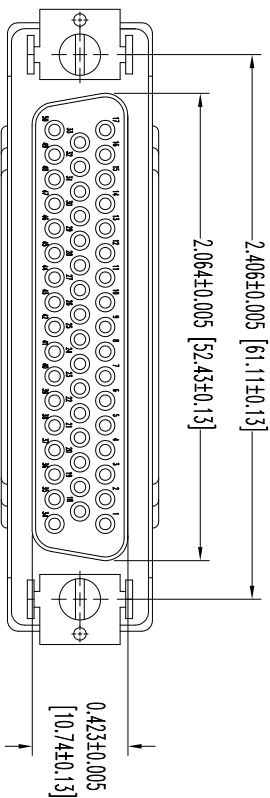
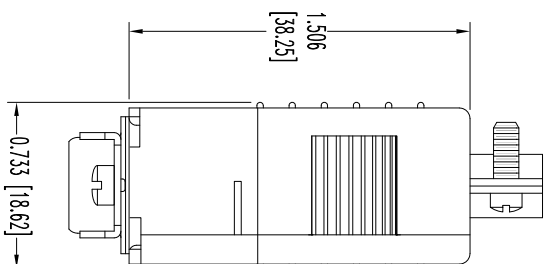
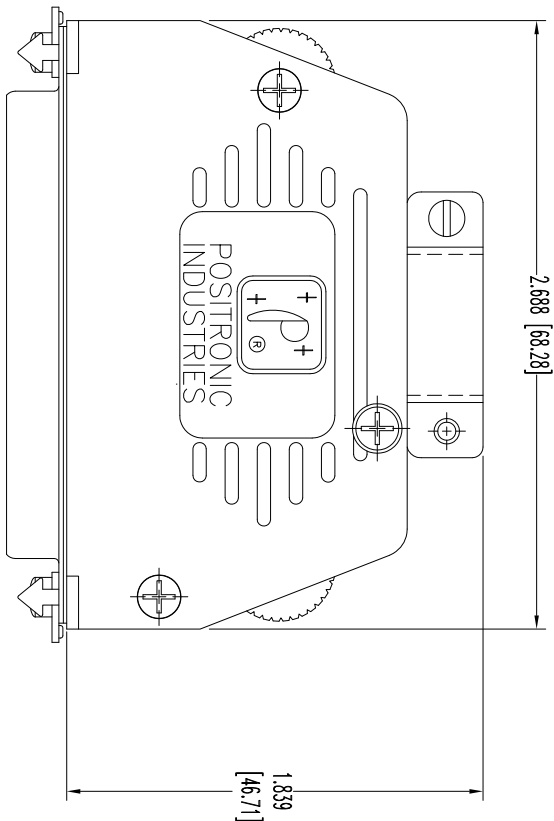


THIS DRAWING CONTAINS INFORMATION PROPRIETARY TO POSTTRONIC AND ITS SUBSIDIARIES. POSTTRONIC BELIEVES THE DATA ON THIS DRAWING TO BE RELIABLE. SINCE THE USER OF THIS DRAWING TAKES OWNERSHIP OF THE DRAWING, POSTTRONIC ASSUMES NO RESPONSIBILITY FOR RESULTS OBTAINED OR DAMAGES INCURRED FROM USE OF SUCH INFORMATION IN WHOLE OR IN PART.



NOTES:

1. MATERIALS AND FINISHES:

INSULATOR: GLASS FILLED DAP PER ASTM-D5948, TYPE SDG-F, UL 94V-0, COLOR: GREEN.

CONTACTS: PRECISION MACHINED COPPER ALLOY, GOLD FLASH OVER NICKEL PLATE.

SHELLS: STEEL, ZINC PLATE WITH CHROMATE SEAL.

HOOD: GLASS FILLED POLYESTER, UL 94V-0, COLOR: BLACK.

LOCK TABS: STEEL WITH NICKEL PLATE.

2. DETAILED PRODUCT, MECHANICAL, AND ELECTRICAL INFORMATION IS AVAILABLE IN THE LATEST STANDARD DENSITY D-SUB PRODUCT PUBLICATION. VISIT CONNECTPOSTTRONIC.COM/PRODUCTS/45/STANDARD-DENSITY-D-SUB-PRODUCT

3. DIMENSIONS ARE IN INCHES [MILLIMETERS].

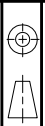
DATE	REV	REVISION RECORD	APP	DR	CK
6-04	13	NC	ECO	39664	COLM BS COLM

SK15154



POSTTRONIC INDUSTRIES INC.
www.connectpositronic.com

FSCM 28198



DECIMAL TOL.
± 0.015 [0.38]

ANGULAR TOL.
± 5°

DATE	6-04-13	DRAWING NUMBER	RD50S10V50
SCALE	N.T.S.	REV.	NC
DRAWN BY	B SHELLBOY		
APPROVED BY	COLM		
TITLE	RD SPRINGS		