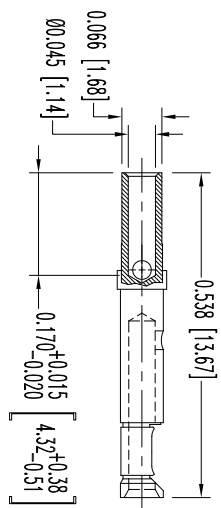
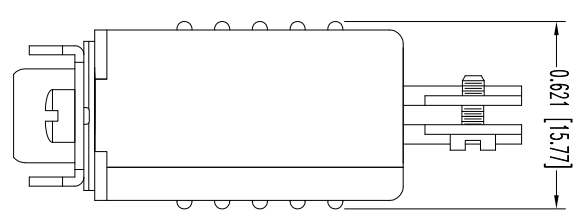
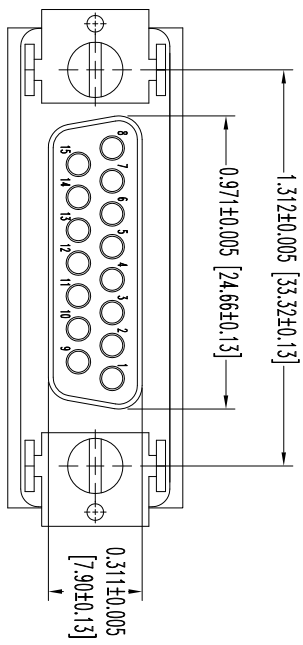
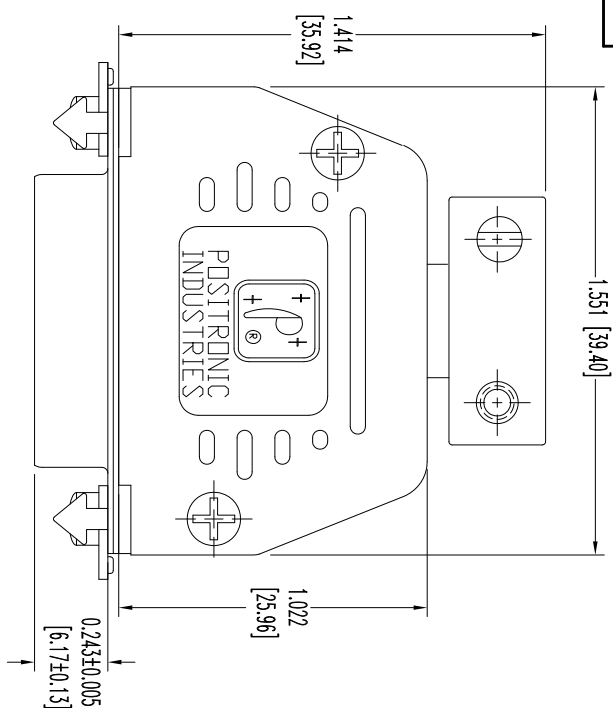


THIS DRAWING CONTAINS INFORMATION PROPRIETARY TO POSTRONIC AND ITS SUBSIDIARIES. POSTRONIC BELIEVES THE DATA ON THIS DRAWING TO BE RELIABLE, SINCE THE USER HAS NOTIFIED US OF ANY ERRORS. POSTRONIC DOES NOT ASSUME ANY LIABILITY FOR THE USER'S USE OF THIS DRAWING. POSTRONIC ASSUMES NO RESPONSIBILITY FOR RESULTS OBTAINED OR DAMAGES INCURRED FROM USE OF SUCH INFORMATION IN WHOLE OR IN PART.




15X FEMALE CONTACT
 ENLARGED

- NOTES:
1. MATERIAL & FINISHES:
 INSULATOR: GLASS FILLED DAP PER ASTM-D-5948, SDG-F, UL 94V-0, GREEN COLOR.
 CONTACTS: PRECISION MACHINED COPPER ALLOY GOLD FLASH OVER NICKEL PLATE.
 SHELLS: STEEL, ZINC PLATE WITH CHROMATE SEAL.
 HOOD: GLASS FILLED NYLON, 94V-0, BLACK.
 LOCK TABS: STEEL, NICKEL PLATE.
 CABLE CLAMPS: STEEL, NICKEL PLATE.
 CABLE CLAMP SCREWS: BRASS, ZINC PLATE WITH CHROMATE SEAL.
 SCREWS: STEEL, ZINC PLATE WITH CHROMATE SEAL.
 2. DETAILED PRODUCT, ELECTRICAL, AND MECHANICAL INFORMATION IS AVAILABLE IN THE LATEST STANDARD DENSITY D-SUB PRODUCT PUBLICATION. VISIT CONNECTPOSTRONIC.COM/PRODUCTS/45/STANDARD-DENSITY-D-SUBMINIATURE OR CONNECTPOSTRONIC.COM.
 3. DIMENSIONS ARE IN INCHES [MILLIMETERS].

DATE	REV	REVISION/RECORD	APP	DR	CK
6-03	13	NC	ECO	39664	COLM BS COLM

SK15151



POSTRONIC INDUSTRIES INC.
www.connectpositronic.com

DECIMAL TOL. ± 0.015 [0.38]	RD SERIES	SCALE N.T.S.	DRAWN BY B SHELLBUDY	DATE 6-03-13	DRAWING NUMBER SK15151
TITLE RD15S10JV50			FSCM 28198	REV. NC	
ANGULAR TOL. ± 5°			APPROVED BY COLM		