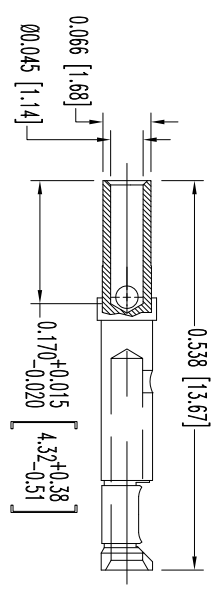
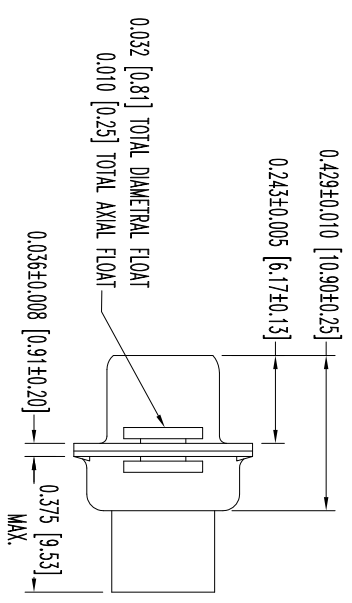
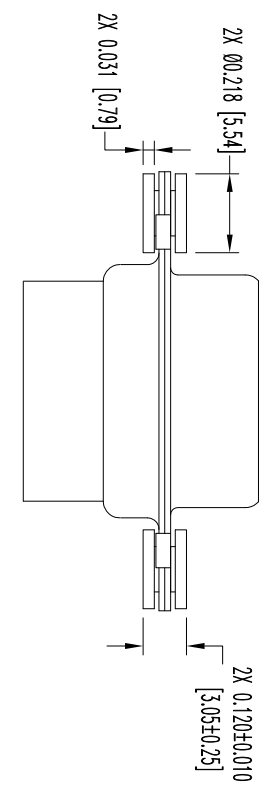
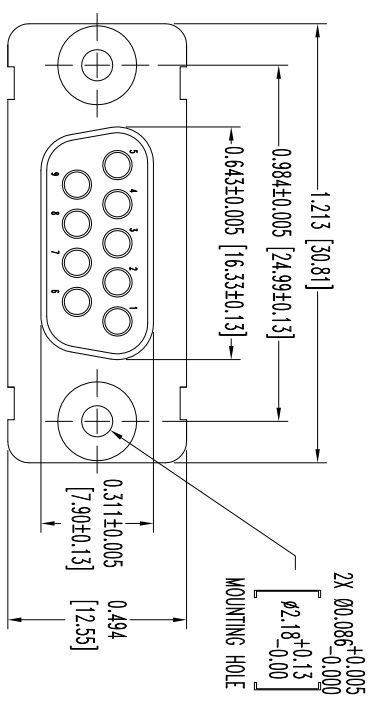


THIS DRAWING CONTAINS INFORMATION PROPRIETARY TO POSITRONIC AND IS SUBJECT TO THE PROPRIETARY BELIEFS, TRADE SECRETS, AND PATENT RIGHTS OF POSITRONIC. TECHNICAL INFORMATION IS GIVEN FREE OF CHARGE. THE USER EMPLOYS SUCH INFORMATION AT HIS OWN DISCRETION. POSITRONIC ASSUMES NO LIABILITY FOR ANY DAMAGE OR RESULTS OBTAINED OR DAMAGES INCURRED FROM USE OF SUCH INFORMATION IN WHOLE OR IN PART.



9X FEMALE CONTACT  
ENLARGED



**POSITRONIC INDUSTRIES INC.**  
www.connectpositronic.com

FSCM 28198

DECIMAL TOL.	± 0.015 [0.38]	RD SERIES	SCALE	N.T.S.	DRAWN BY	B SHELLBUDY
ANGULAR TOL.	± 5°	TITLE	RD9S1F00S	DATE	11-20-12	DRAWING NUMBER
			SK14625	REV.	NC	

DATE	REV	REVISION/RECORD	APP	DR	CK
11-20	NC	ECO 37800	COLB	BS	COLB

SK14625

NOTES:

1. MATERIALS AND FINISHES:  
INSULATOR: GLASS FILLED DAP PER ASTM-D5948, SDG-F, UL 94V-0, COLOR: GREEN.  
CONTACTS: PRECISION MACHINED COPPER ALLOY, GOLD FLASH OVER NICKEL PLATE.  
SHEETS: STAINLESS STEEL, PASSIVATED.  
FLOAT BUSHINGS: STAINLESS STEEL, PASSIVATED.
2. DETAILED PRODUCT, MECHANICAL, AND ELECTRICAL INFORMATION IS AVAILABLE IN THE LATEST STANDARD DENSITY D-SUB PRODUCT PUBLICATION.  
VISIT [CONNECTPOSITRONIC.COM/PRODUCTS/45/STANDARD-DENSITY-D-SUB-PRODUCT-PUBLICATION](http://CONNECTPOSITRONIC.COM/PRODUCTS/45/STANDARD-DENSITY-D-SUB-PRODUCT-PUBLICATION).
3. DIMENSIONS ARE IN INCHES [MILLIMETERS].