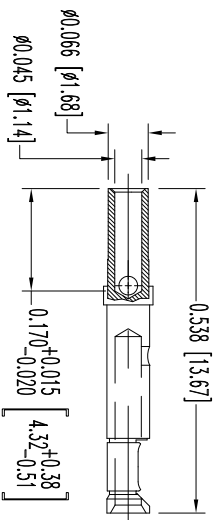
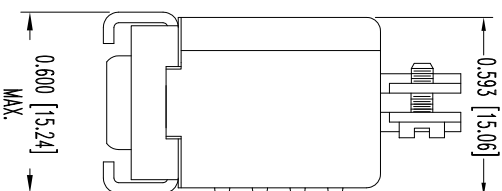
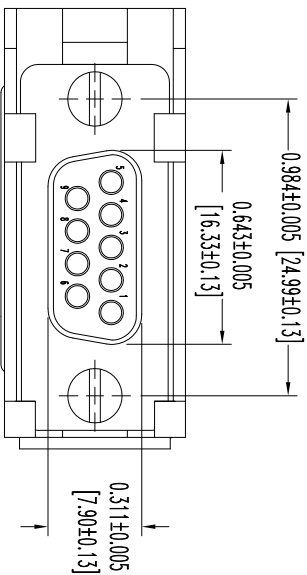
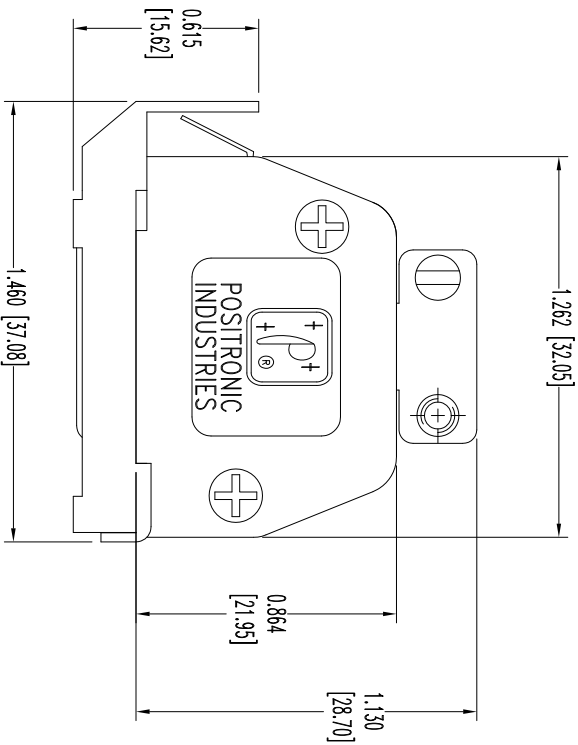


THIS DRAWING CONTAINS INFORMATION PROPRIETARY TO POSITRONIC AND IS BEING MADE AVAILABLE TO YOU UNDER THE PROVISIONS OF A DRAWING TO BE RELEASED UNDER THE TECHNICAL INFORMATION IS GIVEN FREE OF CHARGE. THE USER EMPLOYER'S SUCH INFORMATION AT HIS OWN DISCRETION. RESULTS OBTAINED OR DAMAGES INCURRED FROM USE OF SUCH INFORMATION IN WHOLE OR IN PART.



9X FEMALE CONTACT

- NOTES:
1. MATERIALS AND FINISHES:  
 INSULATOR: GLASS FILLED DAP PER ASTM-D-5948, SDG-F, UL 94V-0, COLOR: GREEN.  
 CONTACTS: PRECISION MACHINED COPPER ALLOY WITH BERYLLIUM COPPER CLIP, GOLD FLASH OVER NICKEL PLATE.  
 SHELLS: STEEL WITH TIN PLATE.  
 HOOD: GLASS FILLED POLYESTER, 94V-0, COLOR: BLACK.  
 LOCK LEVER AND CABLE CLAMPS: STEEL WITH NICKEL PLATE.  
 CABLE CLAMP SCREWS: BRASS, ZINC PLATE WITH CHROMATE SEAL.  
 HOOD AND MOUNTING SCREWS: STEEL, ZINC PLATE WITH CHROMATE SEAL.
  2. DETAILED PRODUCT, MECHANICAL, AND ELECTRICAL INFORMATION IS AVAILABLE IN THE LATEST STANDARD DENSITY D-SUB PRODUCT PUBLICATION. VISIT [CONNECTPOSITRONIC.COM/PRODUCTS/45/STANDARDENSITYD-SUBMINIATURE](http://CONNECTPOSITRONIC.COM/PRODUCTS/45/STANDARDENSITYD-SUBMINIATURE) OR [CONNECTPOSITRONIC.COM](http://CONNECTPOSITRONIC.COM).
  3. DIMENSIONS ARE IN INCHES [MILLIMETERS].

DATE	REV	REVISION RECORD	APP	DR	CK
10-24	NC	ECO 37465	COLB	BS	COLB

SK14533



**POSITRONIC INDUSTRIES INC.**  
[www.connectpositronic.com](http://www.connectpositronic.com)

FSCM 28198

ANGULAR TOL. ± 5°	DECIMAL TOL. ± 0.015 [0.38]	RD SERIES	SCALE N.T.S.	DRAWN BY B SHELLBUDY	DATE 10-24-12	DRAWING NUMBER SK14533	REV. NC
				APPROVED BY COLB			