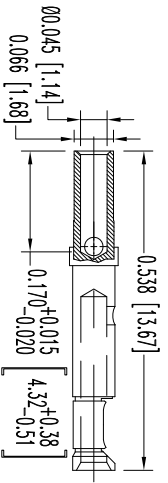
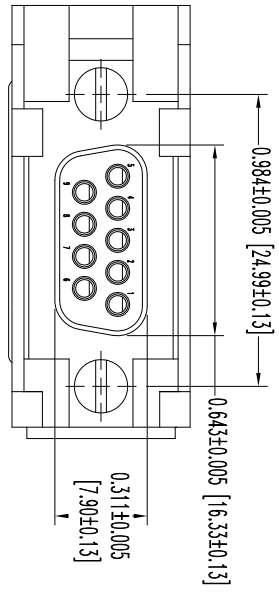
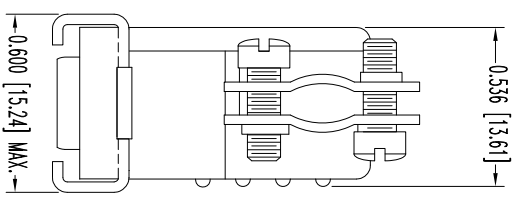
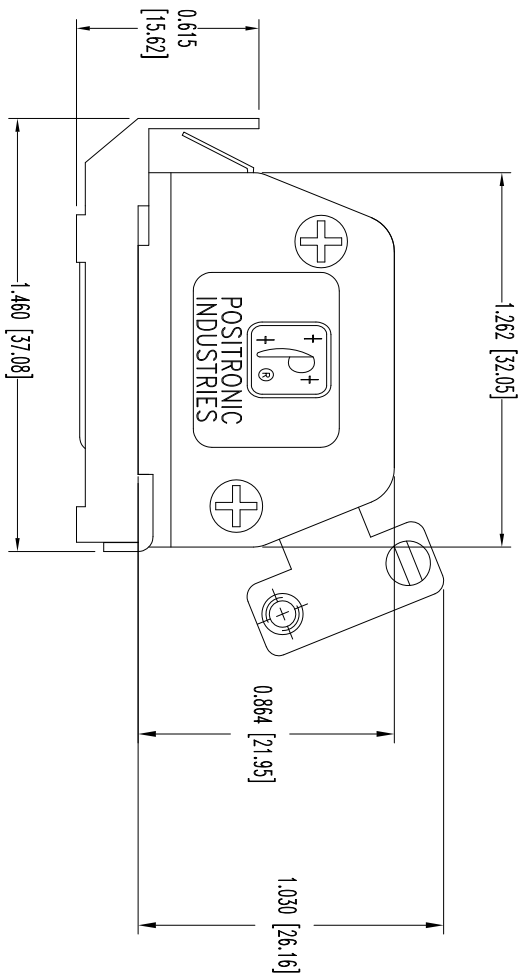


THIS DRAWING CONTAINS INFORMATION PROPRIETARY TO POSTTRONIC AND ITS SUBSIDIARIES. POSTTRONIC BELIEVES THE DATA ON THIS DRAWING TO BE RELIABLE, SINCE THE INFORMATION WAS OBTAINED FROM THE MANUFACTURER OF THE USER EQUIPMENT. SUCH INFORMATION IS THE SOLE DISCRETION AND RISK. POSTTRONIC ASSUMES NO RESPONSIBILITY FOR RESULTS OBTAINED OR DAMAGES INCURRED FROM USE OF SUCH INFORMATION UNLESS OTHERWISE STATED.


SK11512

DATE	REV	REVISION RECORD	APP	DR	OK
5-18-10	NC	ECO 32504	TK	BS	TK
1-28-13	A	ECO 38283	COLF	BE	COLF



9X FEMALE CONTACT
ENLARGED

- NOTES:
- MATERIALS AND FINISHES:
INSULATOR: GLASS FILLED DAP PER ASTM-D5948, SDG-F, UL 94V-0, COLOR: GREEN.
CONTACTS: PRECISION MACHINED COPPER ALLOY WITH BERYLLIUM COPPER CLIP, GOLD FLASH OVER NICKEL PLATE.
SHELLS: STEEL, ZINC PLATE WITH CHROMATE SEAL.
HOOD: GLASS FILLED NYLON, UL 94V-0, COLOR: BLACK.
LOCK LEVER AND CABLE CLAMPS: STEEL WITH NICKEL PLATE.
CABLE CLAMP SCREWS: BRASS, ZINC PLATE WITH CHROMATE SEAL.
 - DETAILED PRODUCT, MECHANICAL, AND ELECTRICAL INFORMATION IS AVAILABLE IN THE LATEST STANDARD DENSITY D-SUB PRODUCT PUBLICATION. VISIT CONNECTPOSTTRONIC.COM/PRODUCTS/45/STANDARDENSITYD-SUBMINIATURE OR CONNECTPOSTTRONIC.COM.
 - CONNECTORS ARE COMPLIANT TO THE CURRENT ROHS DIRECTIVE.
 - DIMENSIONS ARE IN INCHES [MILLIMETERS].

		POSTTRONIC INDUSTRIES INC. www.connectposttronic.com		FSCM 28198	
		RD SERIES	SCALE N.T.S.	DRAWN BY B SHELLADY	
DECIMAL TOL. ± 0.015 [0.38]		TITLE RD9S10LV10/AA		DATE 5-18-10	
ANGULAR TOL. ± 5°		DRAWING NUMBER SK11512		REV. A	