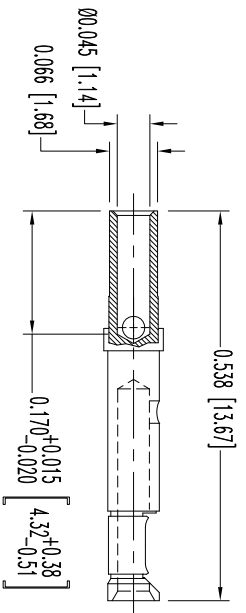
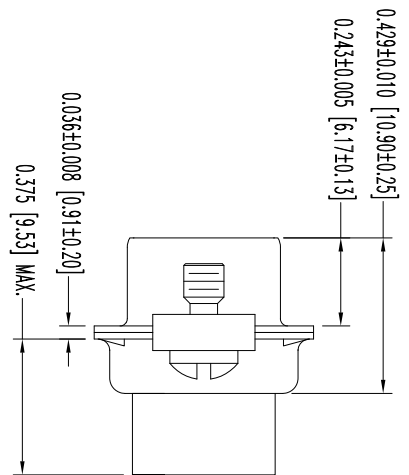
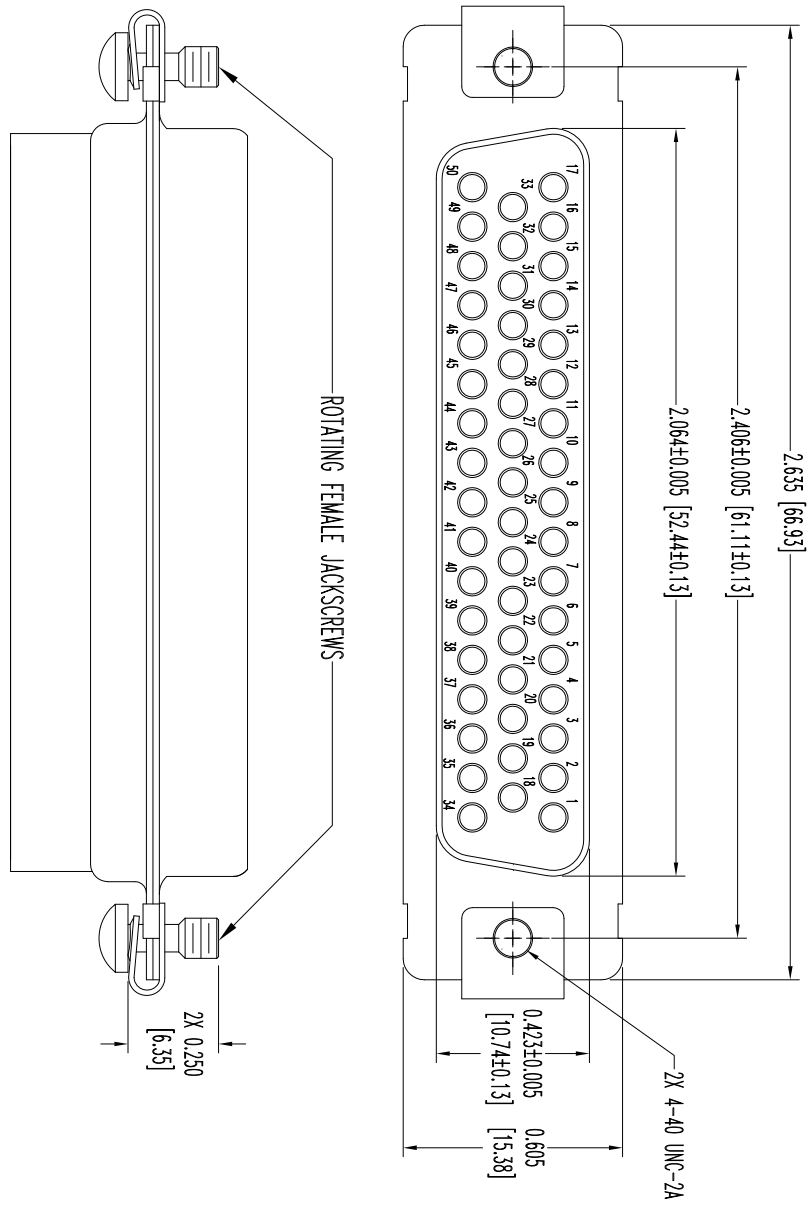


THIS DRAWING CONTAINS INFORMATION PROPRIETARY TO POSITRONIC AND ITS SUBSIDIARIES. POSITRONIC BELIEVES THE DATA ON THIS DRAWING TO BE RELIABLE, SINCE THE USER HAS BEEN ADVISED OF THE LIMITATIONS OF THE DATA AND RISK. POSITRONIC ASSUMES NO RESPONSIBILITY FOR RESULTS OBTAINED OR DAMAGES INCURRED FROM USE OF SUCH INFORMATION IN WHOLE OR IN PART.

SK10793

DATE	REV	REVISION/RECORD	APP	DR	CK
5-21-09	NC	ECO 31105	RCW	ME	RCW
2-9-11	A	ECO 33654	COLF	ME	COLF
12-13-12	B	ECO 37991	COLF	BE	COLF



50X FEMALE CONTACT  
 ENLARGED

- NOTES:
1. MATERIALS AND FINISHES:  
 INSULATOR: GLASS FILLED DAP PER ASTM-D-5948, SDG-F, UL 94V-0, GREEN COLOR.  
 CONTACTS: PRECISION COPPER ALLOY GOLD FLASH OVER COPPER PLATE.  
 SHELLS: STAINLESS STEEL, PASSIVATED.  
 SCREWS: STAINLESS STEEL, PASSIVATED.  
 U-CLIPS: STAINLESS STEEL, PASSIVATED.
  2. DETAILED PRODUCT, ELECTRICAL, AND MECHANICAL INFORMATION IS AVAILABLE IN THE LATEST STANDARD DENSITY D-SUB PRODUCT PUBLICATION. VISIT [CONNECTPOSITRONIC.COM/PRODUCTS/45/STANDARDENSITYD-SUBMINIATURE](http://CONNECTPOSITRONIC.COM/PRODUCTS/45/STANDARDENSITYD-SUBMINIATURE) OR [CONNECTPOSITRONIC.COM](http://CONNECTPOSITRONIC.COM).
  3. CONNECTORS ARE COMPLIANT TO THE CURRENT ROHS DIRECTIVE.
  4. DIMENSIONS ARE IN INCHES [MILLIMETERS].

**POSITRONIC INDUSTRIES INC.**  
[www.connectpositronic.com](http://www.connectpositronic.com) FSCM 28198

RD SERIES N.T.S. DRAWN BY ME  
 APPROVED BY R WILLIAMS

RD50S100E2S/AA

DATE 5-21-09 DRAWING NUMBER SK10793 REV. B

DECIMAL TOL. ± 0.015 [0.38]  
 ANGULAR TOL. ± 9°