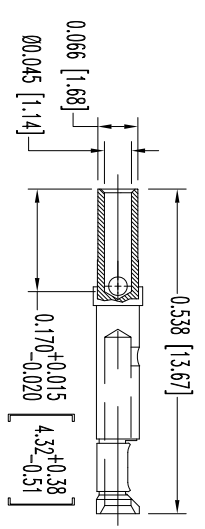
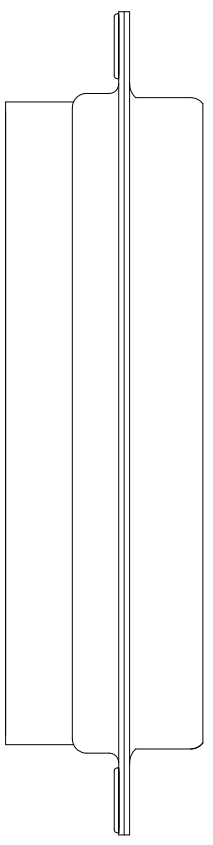
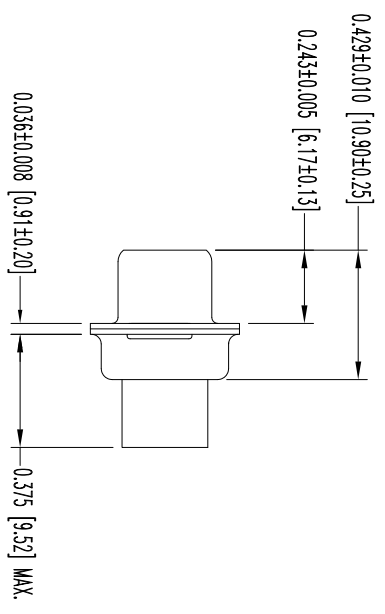
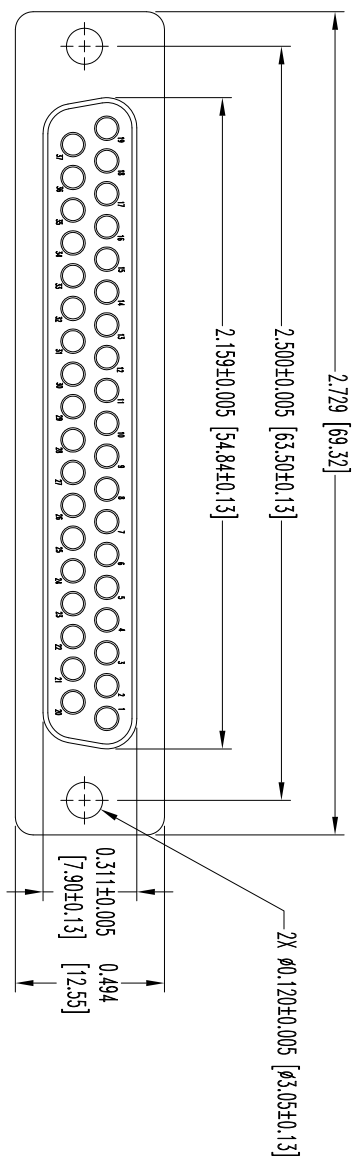


THIS DRAWING CONTAINS INFORMATION PROPRIETARY TO POSITRONIC AND ITS SUBSIDIARIES. POSITRONIC BELIEVES THE DATA ON THIS DRAWING TO BE RELIABLE. SINCE THE TECHNICAL INFORMATION IS GIVEN FREE OF CHARGE, THE USER ASSUMES ALL LIABILITY FOR THE USE OF THE INFORMATION AND RISK. POSITRONIC ASSUMES NO RESPONSIBILITY FOR RESULTS OBTAINED OR DAMAGES INCURRED FROM USE OF SUCH INFORMATION IN WHOLE OR IN PART.



37X FEMALE CONTACT
ENLARGED

DATE	REV	REVISION RECORD	APP	DR	CK
5-20-09	NC	ECO 31051	RCW	ME	TK
12-10-12	A	ECO 37972	COLF	BE	COLF

SK10718

- NOTES:
- MATERIALS AND FINISHES:
INSULATOR: GLASS FILLED DAP PER ASTM-D-5948, SDG-F, UL 94V-0, GREEN COLOR.
CONTACTS: PRECISION MACHINED COPPER ALLOY, GOLD FLASH OVER NICKEL PLATE.
SHELS: STEEL WITH TIN PLATE.
 - DETAILED PRODUCT MECHANICAL AND ELECTRICAL INFORMATION IS AVAILABLE IN THE LATEST STANDARD DENSITY D-SUBMINIATURE PRODUCT PUBLICATION. VISIT CONNECTPOSITRONIC.COM/PRODUCTS/49/STANDARD-DENSITY-D-SUBMINIATURE-OR-CONNECTPOSITRONIC.COM.
 - CONNECTORS ARE COMPLIANT TO THE CURRENT ROHS DIRECTIVE.
 - DIMENSIONS ARE IN INCHES [MILLIMETERS].

		POSITRONIC INDUSTRIES INC. www.connectpositronic.com		FSCM 28198	
		DECIMAL TOL. ± 0.015 [0.38]	SCALE N.T.S.	DRAWN BY R WILLIAMS	DATE 5-20-09
ANGULAR TOL. $\pm 5^\circ$		TITLE RD37S1000X/AA	RD STRIPS	APPROVED BY R WILLIAMS	ME