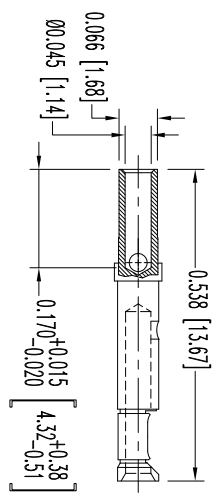
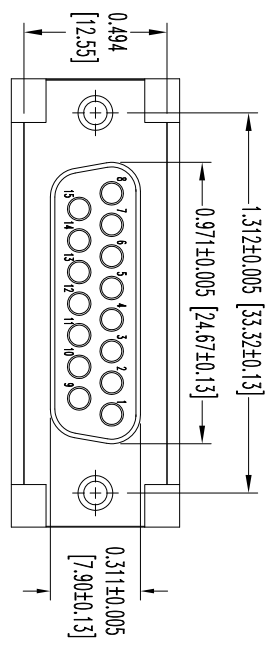
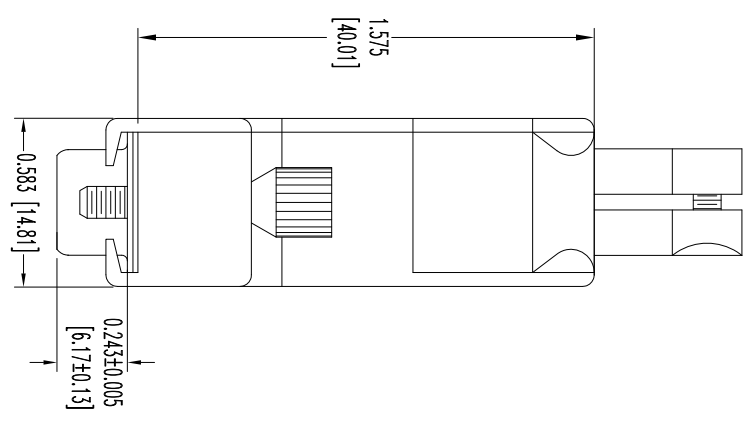
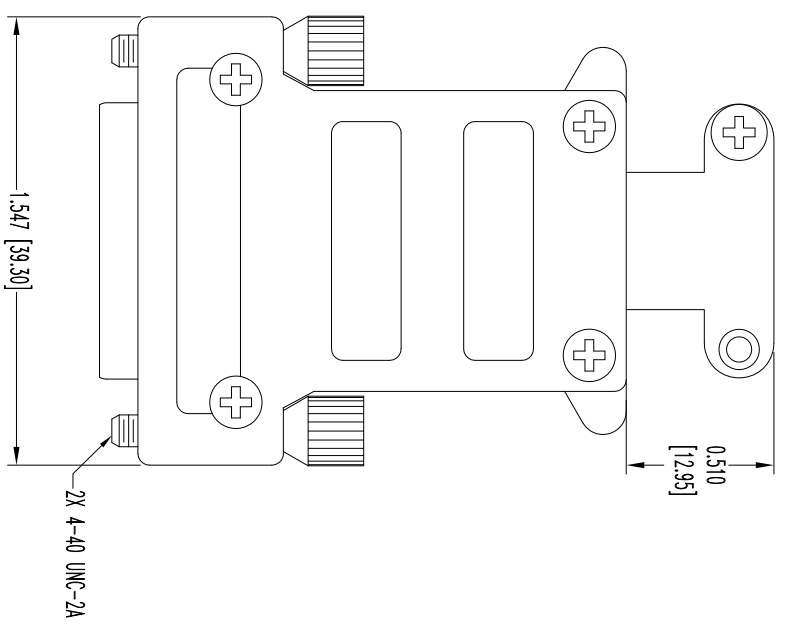


THIS DRAWING CONTAINS INFORMATION PROPRIETARY TO POSITRONIC INDUSTRIES INC. THE DATA ON THIS DRAWING TO BE RELIABLE SINCE THE USER EMPLOYERS SUCH INFORMATION AT HIS OWN DISCRETION RESULTS OBTAINED OR DAMAGES INCURRED FROM USE OF SUCH INFORMATION IN WHOLE OR IN PART.



15X FEMALE CONTACT  
ENLARGED

- NOTES:
1. MATERIALS AND FINISHES:  
INSULATOR: GLASS FILLED DAP PER ASTM-D-5948, SDG-F, UL 94V-0, GREEN COLOR.  
CONTACTS: PRECISION MACHINED COPPER ALLOY GOLD FLASH OVER NICKEL PLATE.  
SHELLS: STEEL, ZINC PLATE WITH CHROMATE SEAL.  
HOOD AND CABLE CLAMPS: ZINC, DIE CAST.  
JACKSCREWS: STEEL, NICKEL PLATE.
  2. DETAILED PRODUCT, ELECTRICAL, AND MECHANICAL INFORMATION IS AVAILABLE IN THE LATEST STANDARD DENSITY D-SUB PRODUCT PUBLICATION. VISIT [CONNECTPOSITRONIC.COM/PRODUCTS/45/STANDARDENSITYD-SUBMINATURE](http://CONNECTPOSITRONIC.COM/PRODUCTS/45/STANDARDENSITYD-SUBMINATURE) OR [CONNECTPOSITRONIC.COM](http://CONNECTPOSITRONIC.COM).
  3. DIMENSIONS ARE IN INCHES [MILLIMETERS].

| DATE    | REV | REVISION/RECORD | APP  | DR | CK   |
|---------|-----|-----------------|------|----|------|
| 4-28-09 | NC  | ECO 31006       | TK   | ME | COLB |
| 1-24    | A   | ECO 33562       | TK   | ME | TK   |
| 5-31    | B   | ECO 39312       | COLB | BS | COLB |

SK10639



**POSITRONIC INDUSTRIES INC.**  
[www.connectpositronic.com](http://www.connectpositronic.com)

FSCM 28198

|                |                    |             |            |          |    |
|----------------|--------------------|-------------|------------|----------|----|
| ANGULAR TOL.   | $\pm 5^\circ$      | SCALE       | N.T.S.     | DRAWN BY | ME |
| DECIMAL TOL.   | $\pm 0.015$ [0.38] | APPROVED BY | T KEPLER   |          |    |
| DATE           | 4-28-09            | TITLE       | RD SERIES  |          |    |
| DRAWING NUMBER | SK10639            |             | RD15S10GE0 |          |    |
| REV.           | B                  |             |            |          |    |