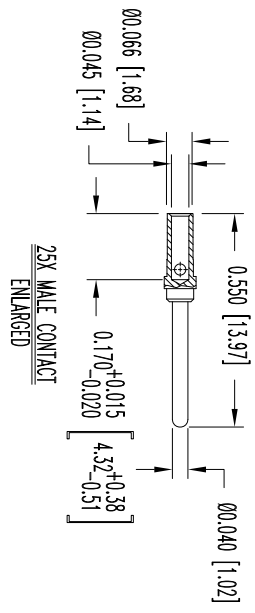
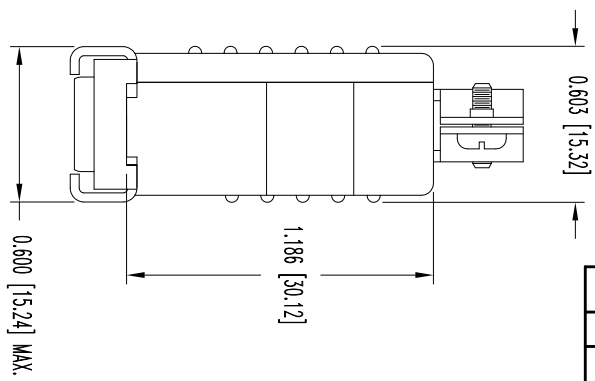
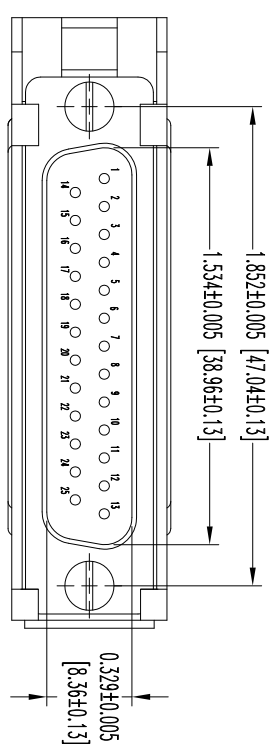
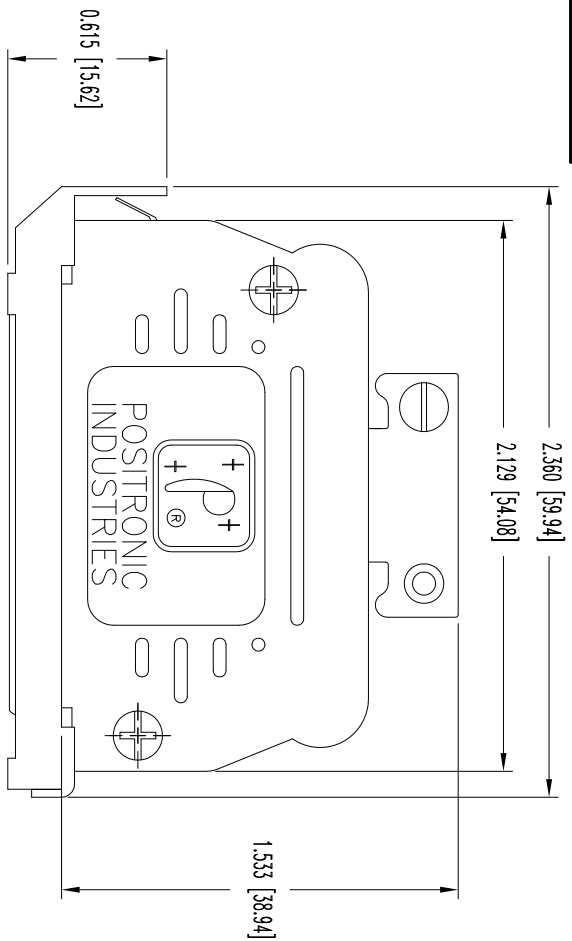



THIS DRAWING CONTAINS INFORMATION PROPRIETARY TO POSITRONIC AND ITS SUBSIDIARIES. POSITRONIC BELIEVES THE DATA ON THIS DRAWING TO BE RELIABLE, SINCE THE USER HAS AGREED TO ASSUME ALL LIABILITY FOR THE RESULTS OBTAINED OR DAMAGES INCURRED FROM USE OF SUCH INFORMATION (WHOLE OR IN PART).



- NOTES:
- MATERIALS AND FINISHES:**
 INSULATOR: GLASS FILLED DAP PER ASTM-D-5948, SD6-F, UL 94V-0, GREEN COLOR.
 CONTACTS: PRECISION MACHINED BRASS, GOLD FLASH OVER NICKEL FINISH.
 SHELLS: STEEL, ZINC PLATE WITH CHROMATE SEAL.
 HOOD AND COVER: GLASS FILLED NYLON, 94V-0, BLACK.
 LOCK LEVER: STEEL, NICKEL PLATE.
 CABLE CLAMPS: STEEL, NICKEL PLATE.
 CABLE CLAMP SCREWS: BRASS, ZINC PLATE WITH CHROMATE SEAL.
 COVER SCREWS: STEEL, ZINC PLATE WITH CHROMATE SEAL.
 MOUNTING SCREWS: STEEL, ZINC PLATE WITH CHROMATE SEAL.
 ELECTRICAL CHARACTERISTICS:
 CONTACT CURRENT RATING: 7.5 AMPERES NOMINAL.
 INITIAL CONTACT RESISTANCE: 0.005 OHMS MAX.
 INSULATOR RESISTANCE: 5 G OHMS.
 WORKING VOLTAGE: 300 V r.m.s.
 TEMPERATURE RANGE: -55°C TO +125°C.
 DIMENSIONS ARE IN INCHES [MILLIMETERS].

DATE	REV	REVISION RECORD	APP	DR	CK
9-4-08	NC	ECO 29929	TK	YK	COLM



POSITRONIC INDUSTRIES INC.
www.connectpositronic.com

SCALE: N.T.S.
DRAWN BY: YK
APPROVED BY: T. KEPPLEY

RD SPRINGS

RD25M10JVL0

FSCM 28198

DECIMAL TOL.	± 0.015 [0.38]
ANGULAR TOL.	± 5°
DATE	9-4-08
DRAWING NUMBER	SK9670
REV.	NC

SK9670