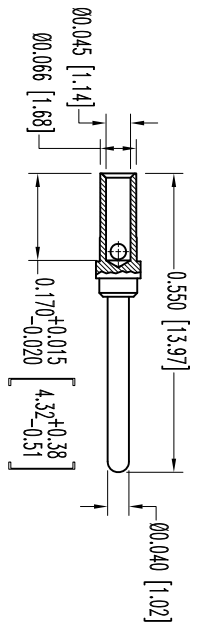
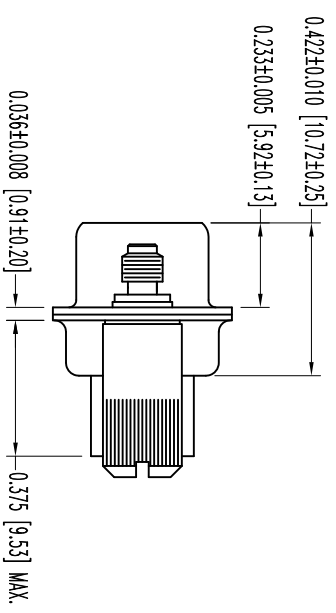
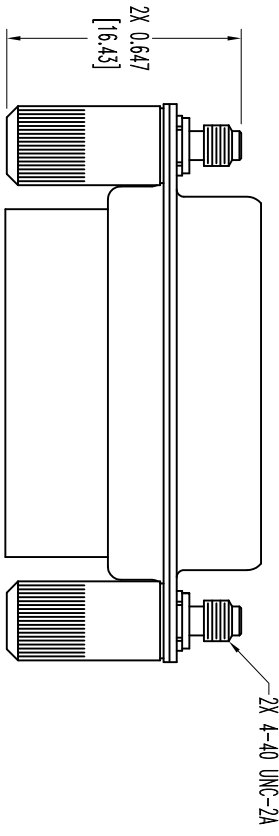
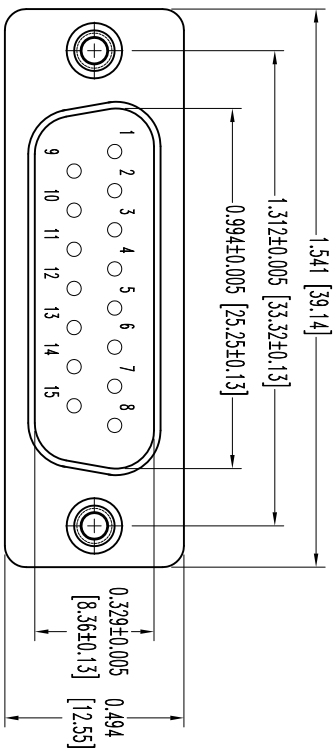


THIS DRAWING CONTAINS INFORMATION PROPRIETARY TO POSITRONIC INDUSTRIES INC. THE DATA ON THIS DRAWING TO BE RELEASED SINCE THE USER EMPLOYS SUCH INFORMATION AT HIS OWN DISCRETION. RESULTS OBTAINED OR DAMAGES INCURRED FROM USE OF SUCH INFORMATION IN WHOLE OR IN PART.



15X MALE CONTACT
ENLARGED

- NOTES:
1. MATERIALS AND FINISHES:
INSULATOR: GLASS FILLED DAP PER ASTM-D-5948, SD6-F, UL 94V-0, COLOR: GREEN.
CONTACTS: PRECISION MACHINED COPPER ALLOY, GOLD FLASH OVER NICKEL PLATE.
SHELLS: STEEL WITH TIN PLATE.
JACKSCREWS: STEEL WITH ZINC PLATE WITH CHROMATE SEAL.

2. DETAILED PRODUCT, ELECTRICAL, AND MECHANICAL INFORMATION IS AVAILABLE IN THE LATEST STANDARD DENSITY D-SUB PRODUCT PUBLICATION. VISIT CONNECTPOSITRONIC.COM/PRODUCTS/45/STANDARDENSITYD-SUBMINIATURE OR CONNECTPOSITRONIC.COM.
3. DIMENSIONS ARE IN INCHES [MILLIMETERS].

DATE	REV	REVISION RECORD	APP	DR	CK
10-13-11	NC	ECO 34589	COLL	BS	COLL

SK12724

POSITRONIC INDUSTRIES INC.
www.connectpositronic.com

RD SERIES	SCALE	DRAWN BY	APPROVED BY	FSC# 28198
RD15M100EX	N.T.S.	B SHELLBY	COLL	
DATE	DRAWING NUMBER	REV.		
10-13-11	SK12724	NC		