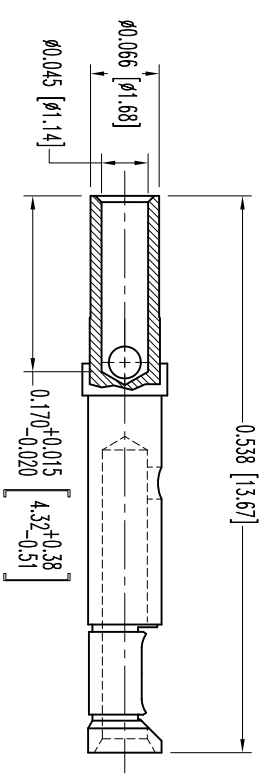
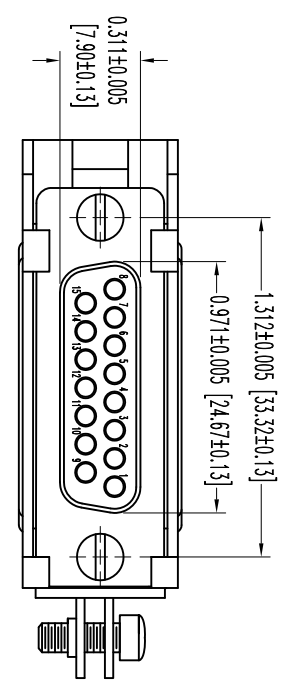
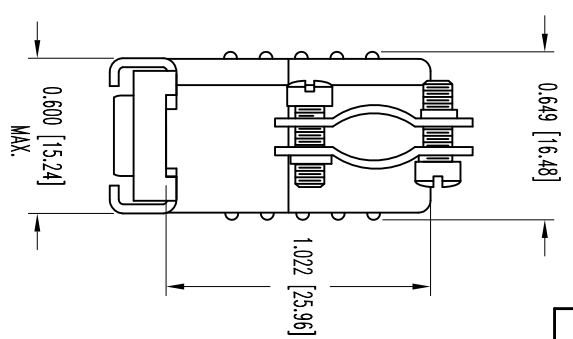
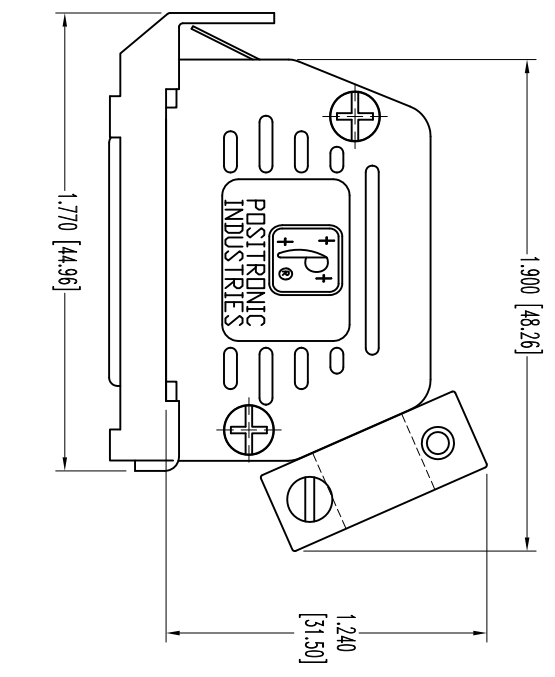


THIS DRAWING CONTAINS INFORMATION PROPRIETARY TO POSITRONIC INDUSTRIES INC. THE DATA ON THIS DRAWING TO BE RELIABLE, SINCE THE USER EMPLOYS SUCH INFORMATION AT HIS OWN DISCRETION. POSITRONIC INDUSTRIES INC. MAKES NO WARRANTY AS TO THE RESULTS OBTAINED OR DAMAGES INCURRED FROM USE OF SUCH INFORMATION IN WHOLE OR IN PART.



15X FEMALE CONTACT (ENLARGED)

- NOTES:
1. MATERIALS AND FINISHES:  
 INSULATOR: GLASS FILLED DAP PER ASTM-D5948, SDG-F, UL 94V-0, COLOR: GREEN.  
 CONTACTS: PRECISION MACHINED COPPER ALLOY WITH BERYLLIUM COPPER CLIP, GOLD FLASH OVER NICKEL PLATE.  
 SHELLS: STEEL, ZINC PLATE WITH CHROMATE SEAL.  
 HOOD: GLASS FILLED NYLON, UL 94V-0, COLOR: BLACK.  
 LOCK LEVER AND CABLE CLAMPS: STEEL WITH NICKEL PLATE.  
 CABLE CLAMP SCREWS: BRASS, ZINC PLATE WITH CHROMATE SEAL.  
 SCREWS: STEEL, ZINC PLATE WITH CHROMATE SEAL.

2. DETAILED PRODUCT, MECHANICAL, AND ELECTRICAL INFORMATION IS AVAILABLE IN THE LATEST STANDARD DENSITY D-SUB PRODUCT PUBLICATION. VISIT [CONNECTPOSITRONIC.COM/PRODUCTS/45/STANDARDSDENSITYD-SUBMINIATURE](http://CONNECTPOSITRONIC.COM/PRODUCTS/45/STANDARDSDENSITYD-SUBMINIATURE) OR [CONNECTPOSITRONIC.COM](http://CONNECTPOSITRONIC.COM).
3. DIMENSIONS ARE IN INCHES [MILLIMETERS].

SK12509

DATE	REV	REVISION RECORD	APP	DR	CK
7-25	NC	ECO 34298	COL	BS	COL

		<b>POSITRONIC INDUSTRIES INC.</b> <a href="http://www.connectpositronic.com">www.connectpositronic.com</a>		FSC# 28198	
		RD SERIES	SCALE N.T.S.	DRAWN BY B SHELLBY	APPROVED BY COL
DECIMAL TOL. ± 0.015 [0.38]		TITLE RD15S10.V1.0		DATE 7-25-11	
ANGULAR TOL. ± 5°		DRAWING NUMBER SK12509		REV. NC	