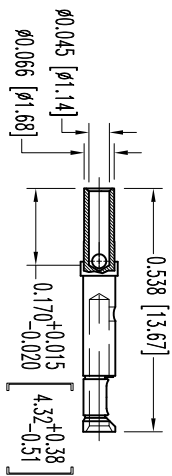
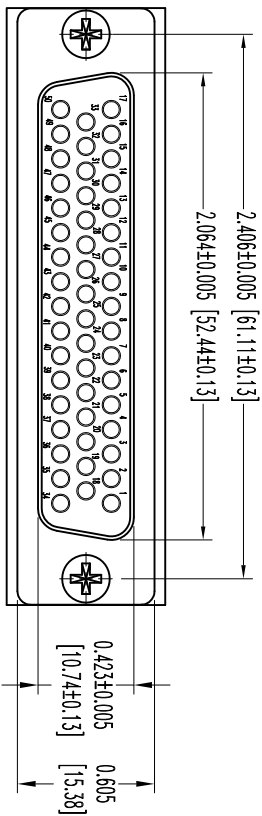
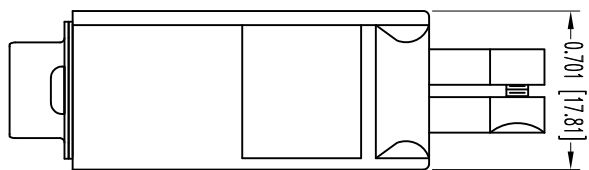
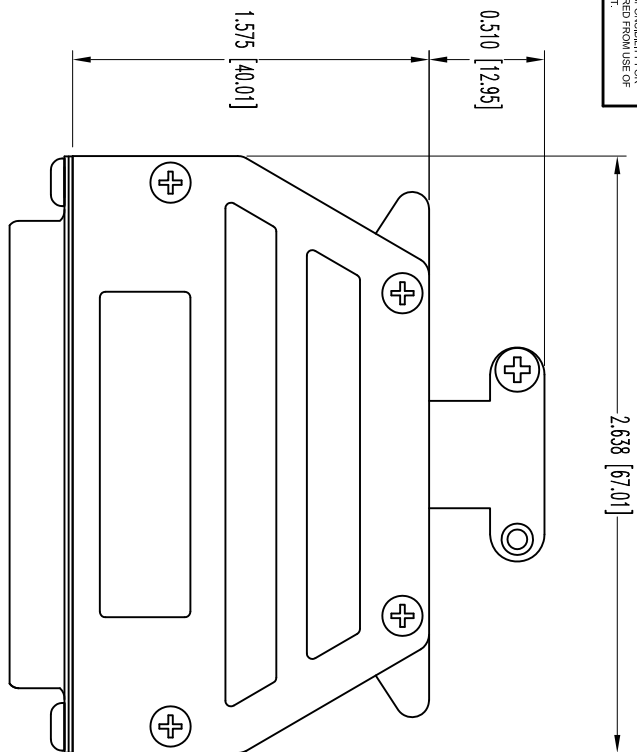


THIS DRAWING CONTAINS INFORMATION PROPRIETARY TO POSITRONIC AND ITS SUBSIDIARIES. POSITRONIC BELIEVES THE DATA ON THIS DRAWING TO BE RELIABLE. SINCE THE TECHNICAL INFORMATION IS GIVEN HERE OF CHANGE, THE USER SHALL BE RESPONSIBLE FOR VERIFYING THE ACCURACY AND RISK. POSITRONIC ASSUMES NO RESPONSIBILITY FOR RESULTS OBTAINED OR DAMAGES INCURRED FROM USE OF SUCH INFORMATION IN WHOLE OR IN PART.



SOX REMALE CONTACT (ENLARGED)

NOTES:

1. MATERIALS AND FINISHES:

INSULATOR: GLASS FILLED DAP PER ASTM-05948, SD6-F, UL 94V-0, COLOR: GREEN.

CONTACTS: PRECISION MACHINED COPPER ALLOY WITH BERYLLIUM COPPER CLIP, GOLD FLASH OVER NICKEL PLATE.

SHELTS: STEEL, ZINC PLATE WITH CHROMATE SEAL.

HOOD AND CABLE CLAMPS: DIE CAST ZINC.

COVER AND CABLE CLAMPS SCREWS: STEEL WITH NICKEL PLATE.

MOUNTING SCREWS: STEEL, ZINC PLATE WITH CHROMATE SEAL.


2. DETAILED PRODUCT, MECHANICAL, AND ELECTRICAL INFORMATION IS AVAILABLE IN THE LATEST STANDARD DENSITY D-SUB PRODUCT PUBLICATION. VISIT CONNECTPOSITRONIC.COM/PRODUCTS/45/STANDARD-DENSITY-D-SUB PRODUCT PUBLICATION.

CONNECTPOSITRONIC.COM/PRODUCTS/45/STANDARD-DENSITY-D-SUB PRODUCT PUBLICATION. VISIT

3. DIMENSIONS ARE IN INCHES [MILLIMETERS].

DATE	REV	REVISION RECORD	APP	DR	CK
7-15	11	ECO 34250	COLF	BS	COLF

SK12484



POSITRONIC INDUSTRIES INC.
www.connectpositronic.com

FSC# 28198

DECIMAL TOL.	± 0.015 [0.38]	SCALE	N.T.S.	DRAWN BY	B SHELLIDY
ANGULAR TOL.	± 5°	RD SPRINGS	APPROVED BY	COLE	
DATE	7-15-11	DRAWING NUMBER	RD50S10G00	REV.	NC
			SK12484		