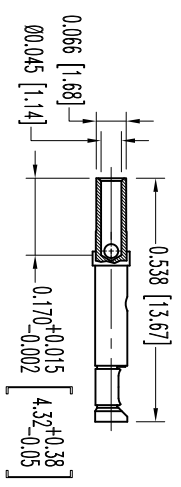
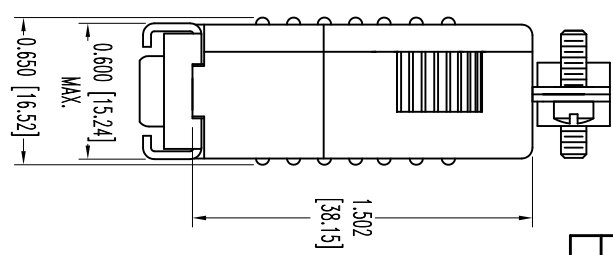
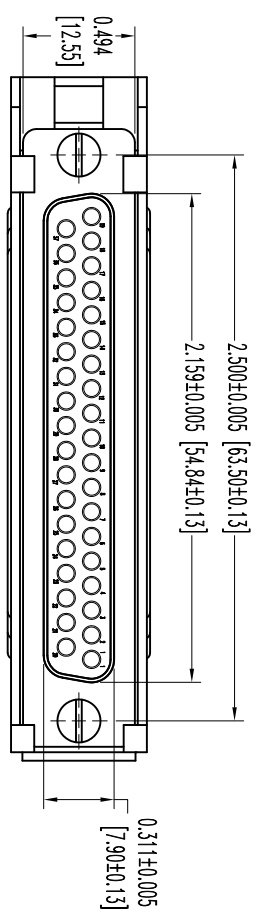
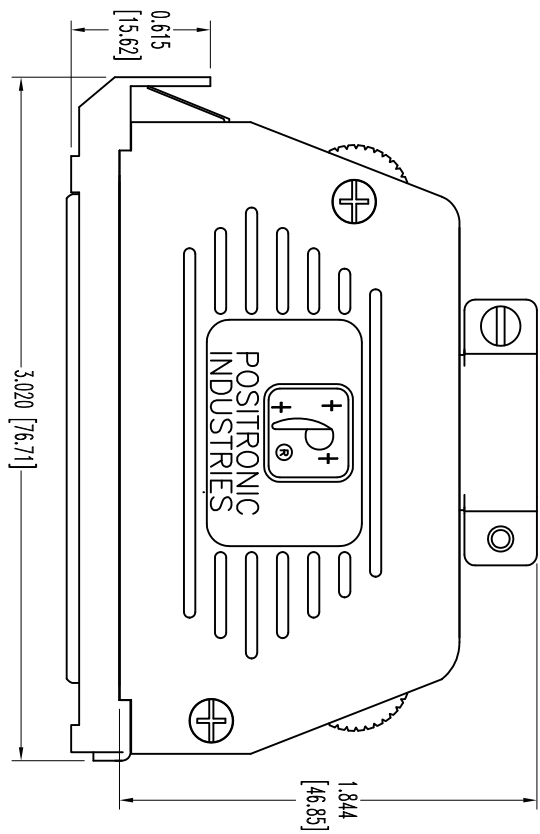


THIS DRAWING CONTAINS INFORMATION PROPRIETARY TO POSITRONIC INDUSTRIES. THE DATA ON THIS DRAWING TO BE RELIABLE, SINCE THE USER EMPLOYER'S SUCH INFORMATION AT HIS OWN DISCRETION. RESULTS OBTAINED OR DAMAGES INCURRED FROM USE OF SUCH INFORMATION IN WHOLE OR IN PART.



37X FEMALE CONTACT
 ENLARGED

- NOTES:**
- MATERIALS AND FINISHES:**
 INSULATOR: GLASS FILLED DAP PER ASTM-D-5948, SDG-F, UL 94V-0, GREEN COLOR.
 CONTACTS: PRECISION MACHINED COPPER ALLOY, GOLD FLASH OVER NICKEL PLATE.
 SHELLS: STEEL, ZINC PLATE WITH CHROMATE SEAL.
 HOOD AND COVER: GLASS FILLED POLYESTER, 94V-0, BLACK.
 LOCK LEVER: STEEL, NICKEL PLATE.
 CABLE CLAMPS: STEEL, NICKEL PLATE.
 CABLE CLAMP SCREWS: BRASS, ZINC PLATE WITH CHROMATE SEAL.
 COVER SCREWS: STEEL, ZINC PLATE WITH CHROMATE SEAL.
 MOUNTING SCREWS: STEEL, ZINC PLATE WITH CHROMATE SEAL.
 - DETAILED PRODUCT, ELECTRICAL, AND MECHANICAL INFORMATION IS AVAILABLE IN THE LATEST STANDARD DENSITY D-SUB PRODUCT PUBLICATION. VISIT CONNECTPOSITRONIC.COM/PRODUCTS/45/STANDARDENSITYD-SUBMINIATURE OR CONNECTPOSITRONIC.COM.
 - DIMENSIONS ARE IN INCHES [MILLIMETERS].

DATE	REV	REVISION RECORD	APP	DR	CK
7-19	NC	ECO 34241	COLB	ME	COLB

POSITRONIC INDUSTRIES INC.
www.connectpositronic.com FSC# 28198

ANGULAR TOL. ± 5°	DATE 7-19-11	DRAWING NUMBER SK12477	REV. NC
DECIMAL TOL. ± 0.015 [0.38]	TITLE RD37S10JVL0	SCALE N.T.S.	DRAWN BY ME
	RD SERIES	APPROVED BY COLB	