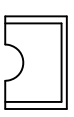
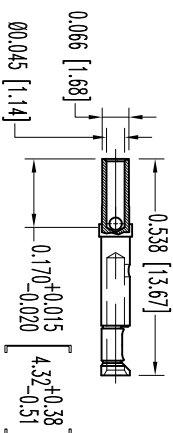
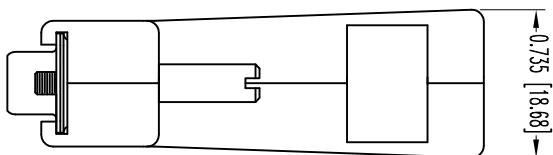
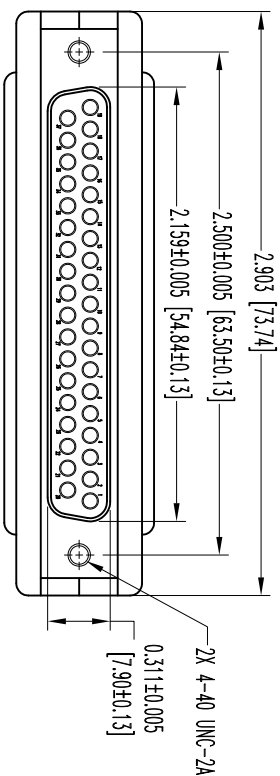
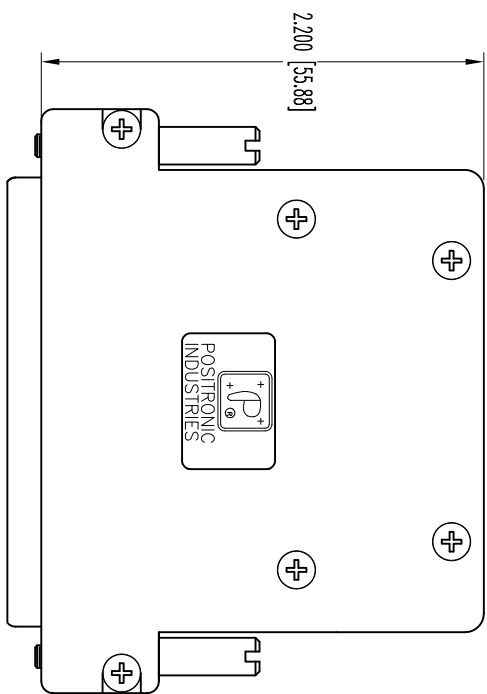
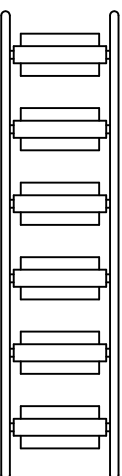


THIS DRAWING CONTAINS INFORMATION PROPRIETARY TO POSTTRONIC AND ITS SUBSIDIARIES. POSTTRONIC BELIEVES THE DATA ON THIS DRAWING TO BE RELIABLE. SINCE THE TECHNICAL INFORMATION IS GIVEN FOR GENERAL INFORMATION ONLY, POSTTRONIC ASSUMES NO RESPONSIBILITY FOR RESULTS OBTAINED OR DAMAGES INCURRED FROM USE OF SUCH INFORMATION UNLESS OTHERWISE SPECIFIED IN WRITING.



TYPICAL INSERT



INSERT TREE ASSEMBLY

NOTES:

1. MATERIALS AND FINISHES:

INSULATOR: GLASS FILLED DAP PER ASTM-D5948, SPG-F, UL 94V-0, COLOR: GREEN.

CONTACTS: PRECISION MACHINED COPPER ALLOY, GOLD FLASH OVER NICKEL PLATE.

SHELLS: STEEL, ZINC PLATE WITH CHROMATE SEAL.

HOOD AND INSERT: CONDUCTIVE COMPOSITE.

JACKSCREWS: STEEL, ZINC PLATE WITH CHROMATE SEAL.

CABLE CLAMPS: STEEL WITH NICKEL PLATE.

SCREWS: BRASS, ZINC PLATE WITH CHROMATE SEAL.

2. DETAILED PRODUCT, MECHANICAL, AND ELECTRICAL INFORMATION IS AVAILABLE IN THE LATEST STANDARD DENSITY D-SUB PRODUCT PUBLICATION. VISIT CONNECTPOSTTRONIC.COM/PRODUCTS/45/STANDARDENSITY-D-SUBMINIATURE-OR-CONNECTPOSTTRONIC.COM.

3. DIMENSIONS ARE IN INCHES [MILLIMETERS].

DATE	REV	REVISION RECORD	APP	DR	CK
5-03-11	NC	ECO 33967	COLF	BS	COLF

SK12349

POSTTRONIC INDUSTRIES INC.
www.connectposttronic.com

RD STRIPS

SCALE: N.T.S.

DRAWN BY: B SHELLIDY

APPROVED BY: COLE

FSC# 28198

DATE: 5-03-11

DRAWING NUMBER: SK12349

REV: NC

DECIMAL TOL. ± 0.015 [0.38]

ANGULAR TOL. ± 5°