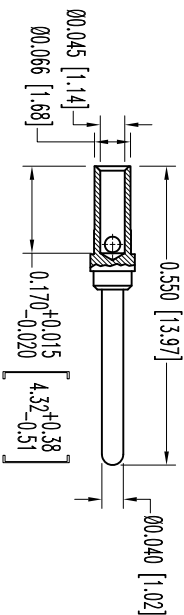
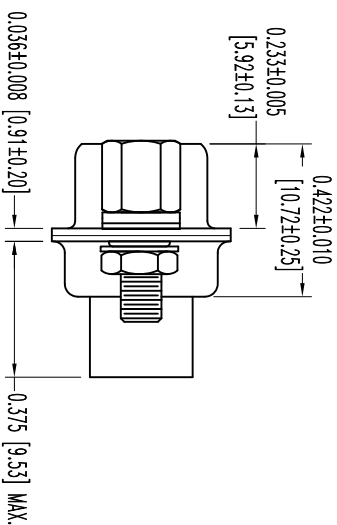
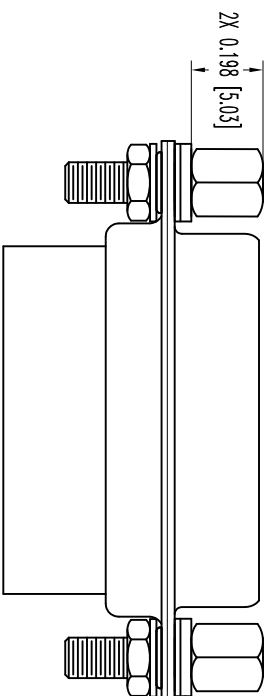
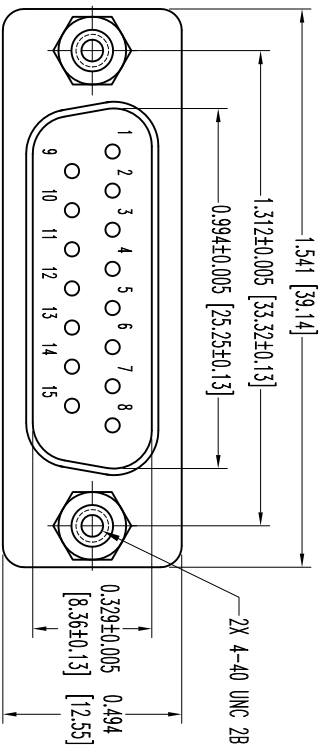


THIS DRAWING CONTAINS INFORMATION PROPRIETARY TO POSITRONIC AND ITS SUBSIDIARIES. POSITRONIC BELIEVES THE DATA ON THIS DRAWING TO BE RELIABLE, SINCE THE USER HAS TAKEN THE NECESSARY PRECAUTIONS TO VERIFY THE USER HAS TAKEN THE NECESSARY PRECAUTIONS TO VERIFY THE RESULTS OBTAINED OR DAMAGES INCURRED FROM USE OF SUCH INFORMATION IN WHOLE OR IN PART.



15X MALE CONTACT
 ENLARGED

NOTES:

1. MATERIALS AND FINISHES:

- INSULATOR: GLASS FILLED DAP PER ASTM-D-5948, SOG-F, UL 94V-0, GREEN COLOR.
- CONTACTS: PRECISION MACHINED COPPER ALLOY, GOLD FLASH OVER NICKEL FINISH.
- SHELLS: STEEL, CADMIUM PLATE WITH CHROMATE SEAL.
- JACKSCREWS: STEEL, ZINC PLATE WITH CHROMATE SEAL.
- HEX NUTS: BRASS, ZINC PLATE WITH CHROMATE SEAL.
- LOCKWASHERS: BRONZE, ZINC PLATE WITH CHROMATE SEAL.
- WASHERS: PASSIVATED STAINLESS STEEL.

2. DETAILED PRODUCT, ELECTRICAL, AND MECHANICAL INFORMATION IS AVAILABLE

IN THE LATEST STANDARD DENSITY D-SUB PRODUCT PUBLICATION. VISIT
 CONNECTPOSITRONIC.COM/PRODUCTS/45/STANDARDENSITYD-SUBMINIATURE
 OR CONNECTPOSITRONIC.COM.

3. DIMENSIONS ARE IN INCHES [MILLIMETERS].

DATE	REV	REVISION RECORD	APP	DR	CK
4-18	11	NC	ECO	33905	COLF

SKI2301



POSITRONIC INDUSTRIES INC.
 www.connectpositronic.com

FSC# 28198

DECIMAL TOL.	SCALE	DRAWN BY
± 0.015 [0.38]	N.T.S.	ME
ANGULAR TOL.	APPROVED BY	COLF
± 5°		

TITLE	RD SPRINGS
DATE	4-18-11
DRAWING NUMBER	RD15M100T2C
REV.	NC

DATE	4-18-11
DRAWING NUMBER	SKI2301
REV.	NC