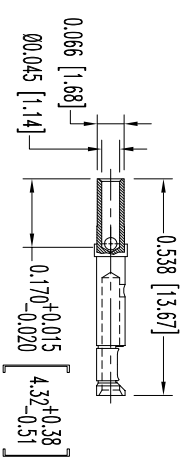
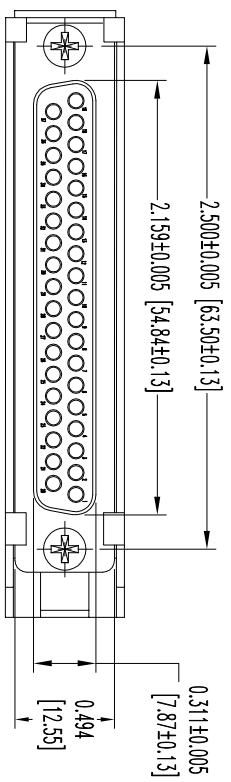
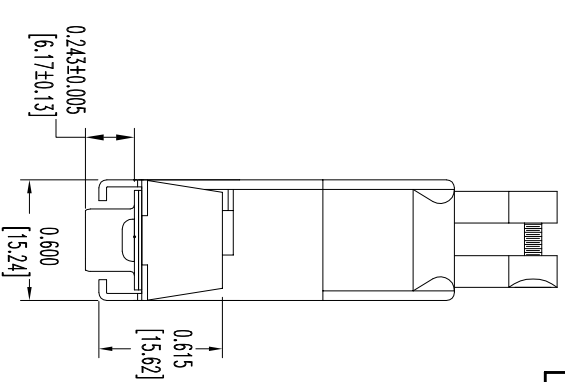
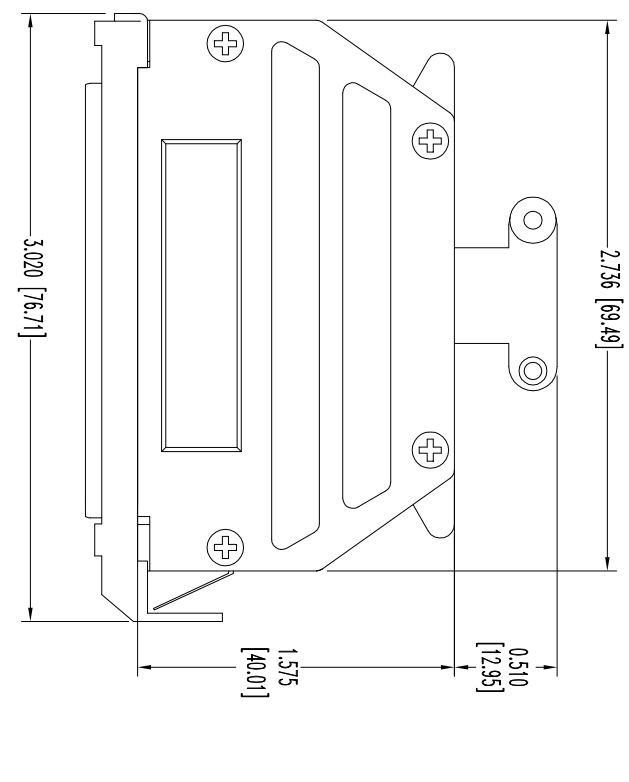


THIS DRAWING CONTAINS INFORMATION PROPRIETARY TO POSTTRONIC AND ITS SUBSIDIARIES. POSTTRONIC BELIEVES THE DATA ON THIS DRAWING TO BE RELIABLE. SINCE THE DESIGN OF A SMALL NUMBER OF GREEN PINS OR CONTACTS, THE USER BEARS THE RESPONSIBILITY FOR THE DESIGN AND RISK. POSTTRONIC ASSUMES NO RESPONSIBILITY FOR RESULTS OBTAINED OR DAMAGES INCURRED FROM USE OF SUCH INFORMATION IN WHOLE OR IN PART.



37X FEMALE CONTACT
ENLARGED

- NOTES:
1. MATERIALS AND FINISHES:
INSULATOR: GLASS FILLED DAP PER ASTM-D-5948, SDG-F, UL 94V-0, GREEN COLOR.
CONTACTS: PRECISION MACHINED COPPER ALLOY GOLD FLASH OVER NICKEL PLATE.
SHEETS: STEEL, ZINC PLATE WITH CHROMATE SEAL.
HOOD AND CABLE CLAMPS: ZINC, DIE CAST.
 - LOCKARM: STEEL, NICKEL PLATE.
LOCKARM SPRING: BERYLLIUM COPPER, NICKEL PLATE.
COVER SCREWS: STEEL, NICKEL PLATE.
MOUNTING SCREWS: STEEL, ZINC PLATE WITH CHROMATE SEAL.
 2. DETAILED PRODUCT, ELECTRICAL, AND MECHANICAL INFORMATION IS AVAILABLE IN THE LATEST STANDARD DENSITY D-SUB PRODUCT PUBLICATION. VISIT CONNECTPOSTTRONIC.COM/PRODUCTS/45/STANDARDENSITYD-SUBMINIATURE OR CONNECTPOSTTRONIC.COM.
 3. CONNECTORS ARE COMPLIANT TO THE CURRENT ROHS DIRECTIVE.
 4. DIMENSIONS ARE IN INCHES [MILLIMETERS].

DATE	REV	REVISION RECORD	APP	DR	CK
2-8	NC	ECO 33643	COLM	ME	COLM
2-7	A	ECO 38406	COLM	BE	COLM
18					

SK12161

		POSTTRONIC INDUSTRIES INC. www.connectposttronic.com		FSCM 28198	
		RD SERIES	SCALE N.T.S.	DRAWN BY ME	APPROVED BY COLM
DECIMAL TOL. ±		TITLE RD37S10GVLO/AA		DATE 2-8-11	
ANGULAR TOL. ± 5°		DRAWING NUMBER SK12161		REV. A	