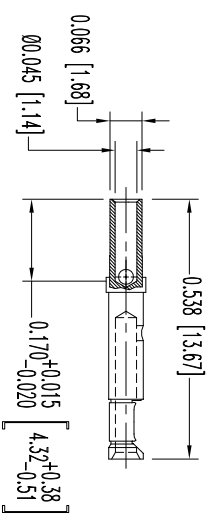
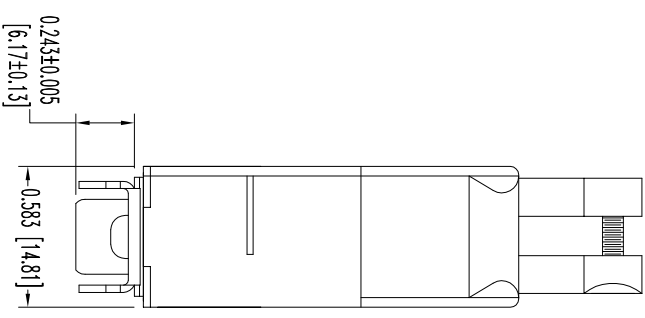
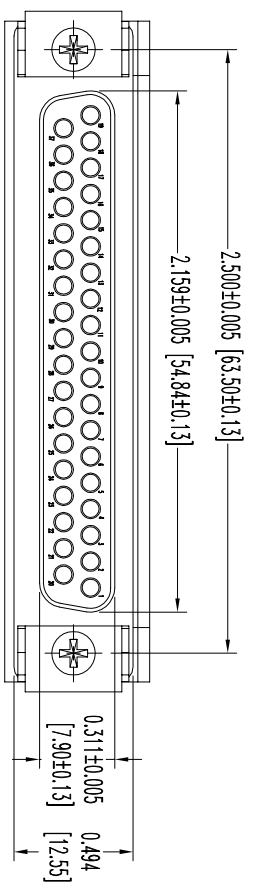
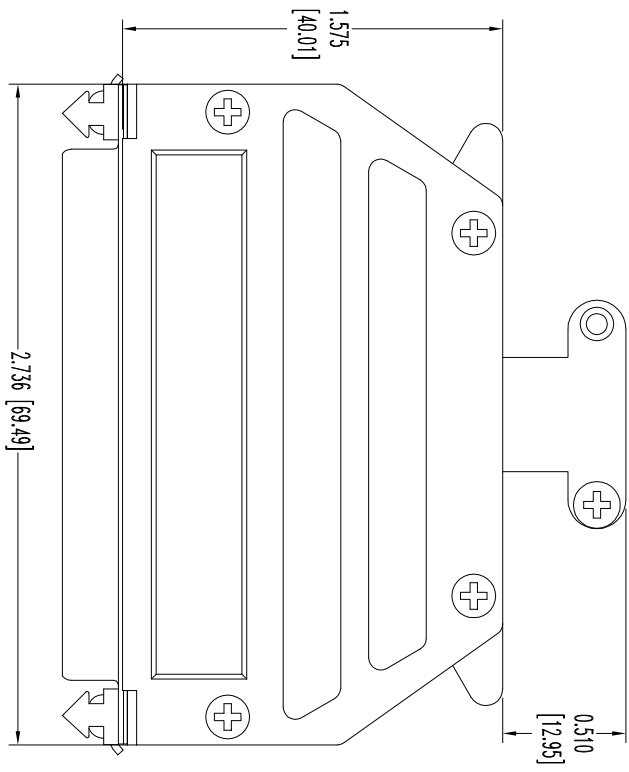


THIS DRAWING CONTAINS INFORMATION PROPRIETARY TO POSITRONIC INDUSTRIES INC. ANY REPRODUCTION OR DISSEMINATION OF THIS DRAWING TO BE RELIABLE SINCE THE TECHNICAL INFORMATION IS GIVEN FREE OF CHARGE. THE USER EMPLOYER'S SUCH INFORMATION AT HIS OWN DISCRETION. POSITRONIC INDUSTRIES INC. ASSUMES NO LIABILITY FOR RESULTS OBTAINED OR DAMAGES INCURRED FROM USE OF SUCH INFORMATION IN WHOLE OR IN PART.



37X FEMALE CONTACT  
ENLARGED

- NOTES:
1. MATERIALS AND FINISHES:  
INSULATOR: GLASS FILLED DAP PER ASTM-D-5948, SD6-F, UL 94V-0, GREEN COLOR.  
CONTACTS: PRECISION MACHINED COPPER ALLOY GOLD FLASH OVER NICKEL PLATE.  
SHELLS: STEEL, ZINC PLATE WITH CHROMATE SEAL.  
HOOD AND CABLE CLAMPS: ZINC, DIE CAST.  
LOCK TABS: STEEL WITH NICKEL PLATE.  
COVER SCREWS: STEEL, NICKEL PLATE.  
MOUNTING SCREWS: STEEL, ZINC PLATE WITH CHROMATE SEAL.
  2. DETAILED PRODUCT, ELECTRICAL, AND MECHANICAL INFORMATION IS AVAILABLE IN THE LATEST STANDARD DENSITY D-SUB PRODUCT PUBLICATION. VISIT [CONNECTPOSITRONIC.COM/PRODUCTS/45/STANDARDENSITYD-SUBMINIATURE](http://CONNECTPOSITRONIC.COM/PRODUCTS/45/STANDARDENSITYD-SUBMINIATURE) OR [CONNECTPOSITRONIC.COM](http://CONNECTPOSITRONIC.COM).
  3. CONNECTORS ARE COMPLIANT TO THE CURRENT ROHS DIRECTIVE.
  4. DIMENSIONS ARE IN INCHES [MILLIMETERS].

DATE	REV	REVISION RECORD	APP	DR	CK
2-8-11	NC	ECO 33643	COLB	ME	COLB
2-7-13	A	ECO 38406	COLB	BE	COLB

SK12160



**POSITRONIC INDUSTRIES INC.**  
[www.connectpositronic.com](http://www.connectpositronic.com)

FSC# 28198

ANGULAR TOL. ± 5°	DECIMAL TOL. ± 0.015 [0.38]	SCALE N.T.S.	DRAWN BY ME
DATE 2-8-11	TITLE RD37S10GV30/AA	APPROVED BY COLB	REV. A
	DRAWING NUMBER SK12160		