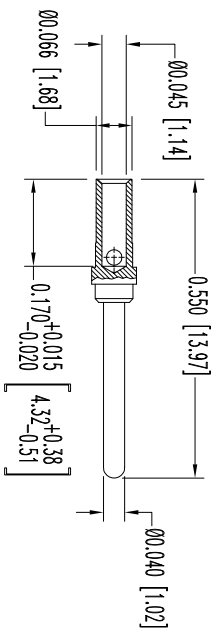
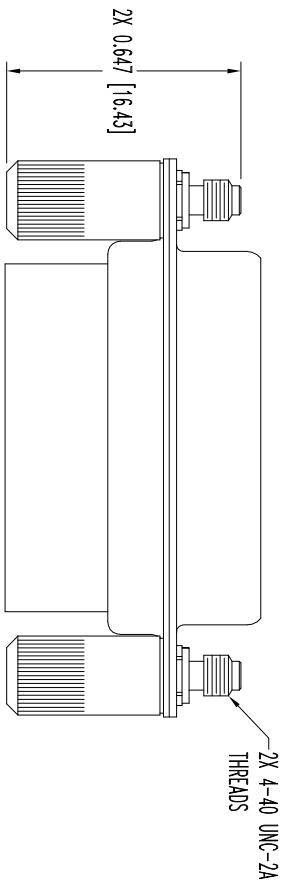
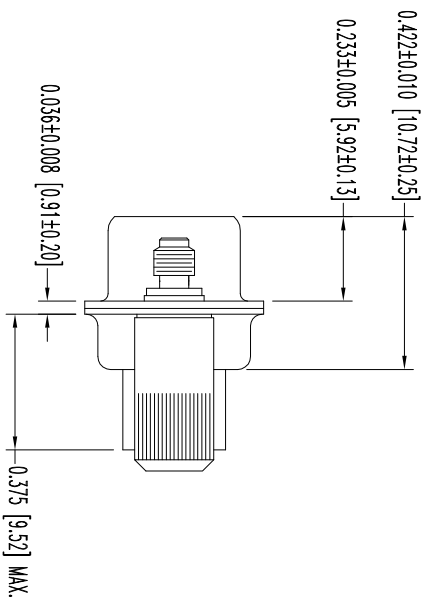
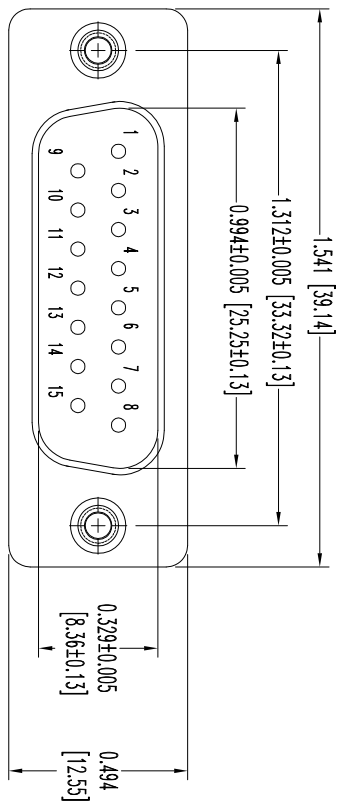


THIS DRAWING CONTAINS INFORMATION PROPRIETARY TO POSITRONIC AND ITS SUBSIDIARIES. POSITRONIC BELIEVES THE DATA ON THIS DRAWING TO BE RELIABLE. SINCE THE USER SHALL BE RESPONSIBLE FOR CHECKING THE DIMENSIONS AND RISK, POSITRONIC ASSUMES NO RESPONSIBILITY FOR RESULTS OBTAINED OR DAMAGES INCURRED FROM USE OF SUCH INFORMATION IN WHOLE OR IN PART.

SK11347

DATE	REV	REVISION/RECORD	APP	DR	CK
2-05	10	NC	ECO	32069	COLM BS COLM



15X MALE CONTACT
ENLARGED

NOTES:

1. MATERIALS AND FINISHES:
INSULATOR: GLASS FILLED DAP PER ASTM-D-5948, SD6-F, UL 94V-0, COLOR: GREEN.
CONTACTS: PRECISION MACHINED COPPER ALLOY, GOLD FLASH OVER NICKEL PLATE.
SHELLS: STEEL, ZINC PLATE WITH CHROMATE SEAL.
JACKSCREWS: STEEL WITH ZINC PLATE WITH CHROMATE SEAL.
2. ELECTRICAL CHARACTERISTICS:
CONTACT CURRENT RATING: 7.5 AMPS NOMINAL
INITIAL CONTACT RESISTANCE: 0.005 OHMS MAX.
INSULATOR RESISTANCE: 5 G OHMS.
WORKING VOLTAGE: 300 V rms
3. WORKING TEMPERATURE: -55°C TO +125°C.
4. DIMENSIONS ARE IN INCHES [MILLIMETERS].



POSITRONIC INDUSTRIES INC.
www.connectpositronic.com

FSCM 28198

DECIMAL TOL. ± 0.015 [0.38]	SCALE N.T.S.	DRAWN BY B SHELLBUDY
ANGULAR TOL. ± 5°	TITLE RD SPRINGS	APPROVED BY S COLE
DATE 2-05-10	DRAWING NUMBER RD15M100E30	REV. NC