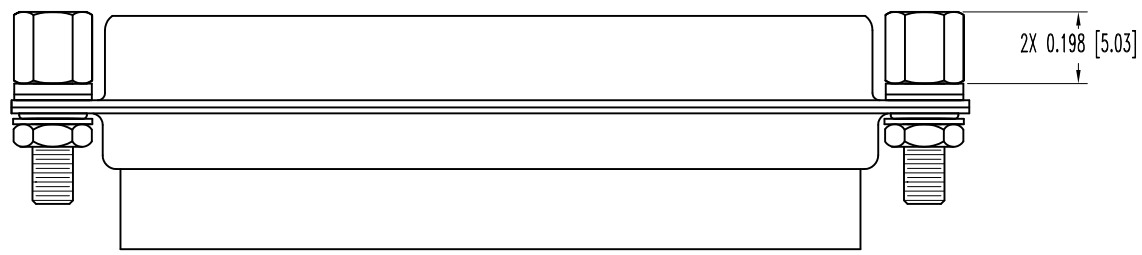
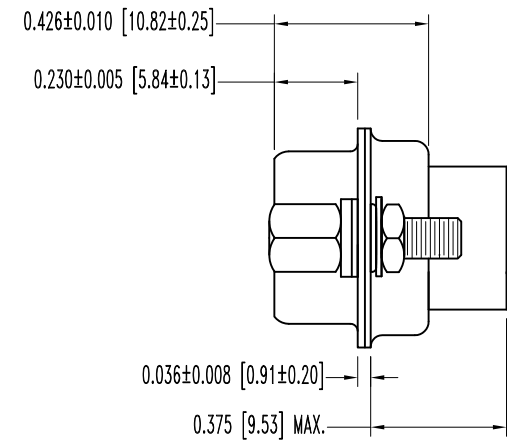
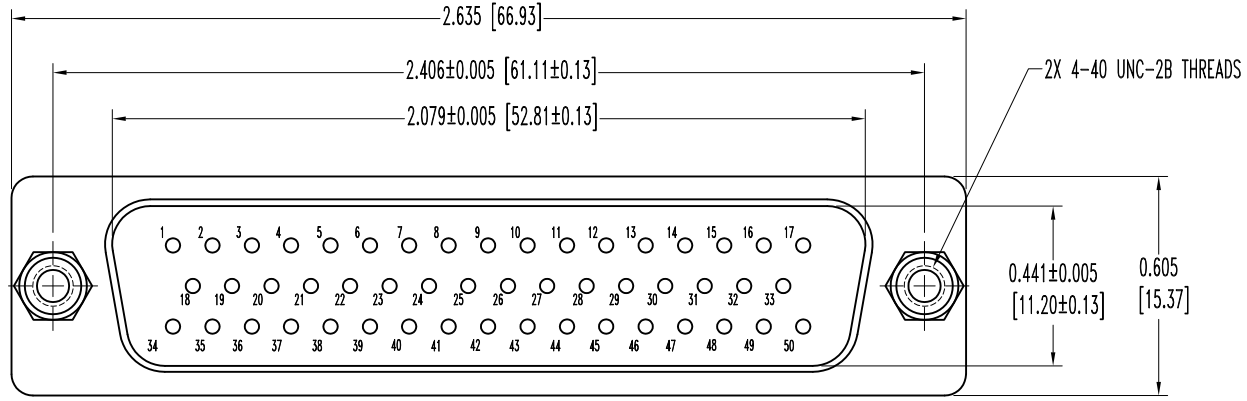


SK10973

THIS DRAWING CONTAINS INFORMATION PROPRIETARY TO POSITRONIC AND ITS SUBSIDIARIES. POSITRONIC BELIEVES THE DATA ON THIS DRAWING TO BE RELIABLE, SINCE THE TECHNICAL INFORMATION IS GIVEN FREE OF CHARGE, THE USER EMPLOYS SUCH INFORMATION AT HIS OWN DISCRETION AND RISK. POSITRONIC ASSUMES NO RESPONSIBILITY FOR RESULTS OBTAINED OR DAMAGES INCURRED FROM USE OF SUCH INFORMATION IN WHOLE OR IN PART.

DATE	REV	REVISION RECORD	APP	DR	CK
8-26-09	NC	ECO 31454	TK	ME	TK



NOTES:

1. MATERIALS AND FINISHES:

INSULATOR: GLASS FILLED DAP PER ASTM-D-5948, SDG-F, UL 94V-0, GREEN COLOR.

SHELLS: STEEL, ZINC PLATE WITH CHROMATE SEAL.

JACKSCREWS: STEEL, ZINC PLATE WITH CHROMATE SEAL.

WASHERS: STAINLESS STEEL, PASSIVATED.

HEX NUTS: BRASS, ZINC PLATE WITH CHROMATE SEAL.

LOCK WASHERS: BRONZE, ZINC PLATE WITH CHROMATE SEAL.

2. ELECTRICAL CHARACTERISTICS:

INSULATOR RESISTANCE: 5 G OHMS.

WORKING VOLTAGE: 300 V r.m.s.

3. WORKING TEMPERATURE: -55°C TO +125°C.

4. DIMENSIONS ARE IN INCHES [MILLIMETERS].

	POSITRONIC INDUSTRIES INC. www.connectpositronic.com		FSCM 28198
	RD SERIES	SCALE N.T.S.	DRAWN BY ME
DECIMAL TOL. ± 0.015 [0.38]	TITLE RD50M000T20		
ANGULAR TOL. ± 5°	DATE 8-26-09	DRAWING NUMBER SK10973	REV. NC
		APPROVED BY T.KEPLEY	