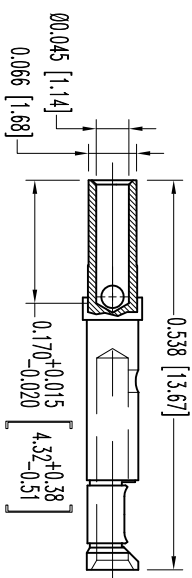
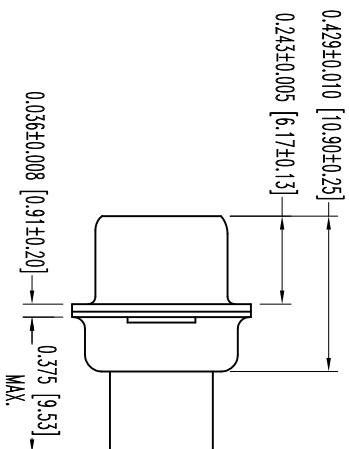
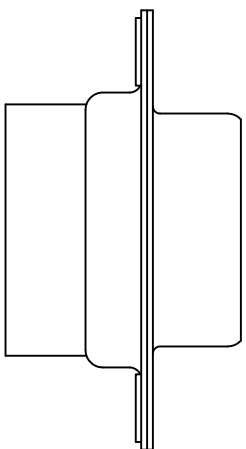
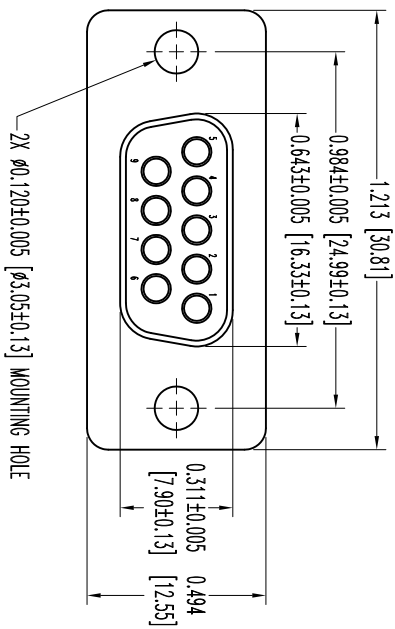


THIS DRAWING CONTAINS INFORMATION PROPRIETARY TO POSITRONIC AND ITS SUBSIDIARIES. POSITRONIC BELIEVES THE DATA ON THIS DRAWING TO BE RELIABLE, SINCE THE USER HAS TAKEN THE NECESSARY PRECAUTIONS TO VERIFY THE DATA. POSITRONIC ASSUMES NO RESPONSIBILITY FOR RESULTS OBTAINED OR DAMAGES INCURRED FROM USE OF SUCH INFORMATION IN WHOLE OR IN PART.



9X FEMALE CONTACT
ENLARGED

- NOTES:
1. MATERIALS AND FINISHES:
INSULATORS: GLASS FILLED DAP PER ASTM-D-5948, SDG-F, UL 94V-0, GREEN COLOR.
SHELLS: STEEL, ZINC PLATE WITH CHROMATE SEAL.
CONTACTS: PRECISION MACHINED COPPER ALLOY GOLD FLASH OVER NICKEL PLATE.
 2. DETAILED PRODUCT, ELECTRICAL, AND MECHANICAL INFORMATION IS AVAILABLE IN THE LATEST STANDARD DENSITY D-SUB PRODUCT PUBLICATION. VISIT CONNECTPOSITRONIC.COM/PRODUCTS/45/STANDARDENSITYD-SUBMINIATURE OR CONNECTPOSITRONIC.COM.
 3. DIMENSIONS ARE IN INCHES [MILLIMETERS].

DATE	REV	REVISION RECORD	APP	DR	CK
5-22-09	NC	ECO 31105	RCM	ME	RCM
3-14-11	A	ECO 33679	COLM	ME	COLM

SK10800



POSITRONIC INDUSTRIES INC.
www.connectpositronic.com

FSC# 28198

DECIMAL TOL. ± 0.015 [0.38]	SCALE N.T.S.	DRAWN BY ME
ANGULAR TOL. ± 5°	RD SPRINGS	APPROVED BY R WILLIAMS
DATE 5-22-09	TITLE RD9S10000	
DRAWING NUMBER SK10800		REV. A