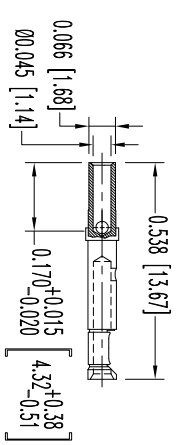
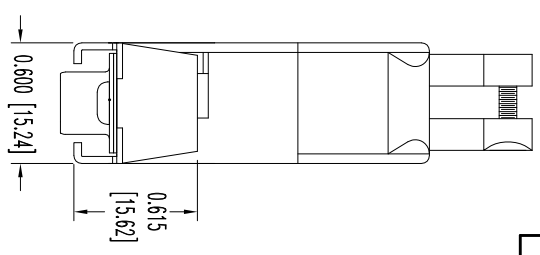
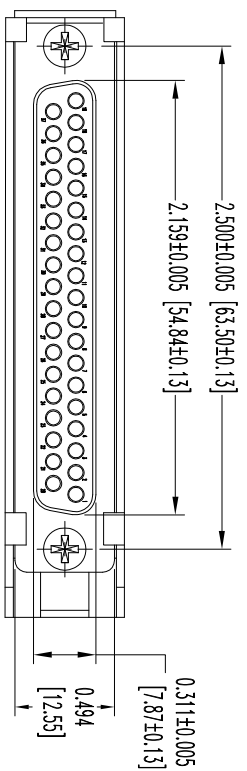
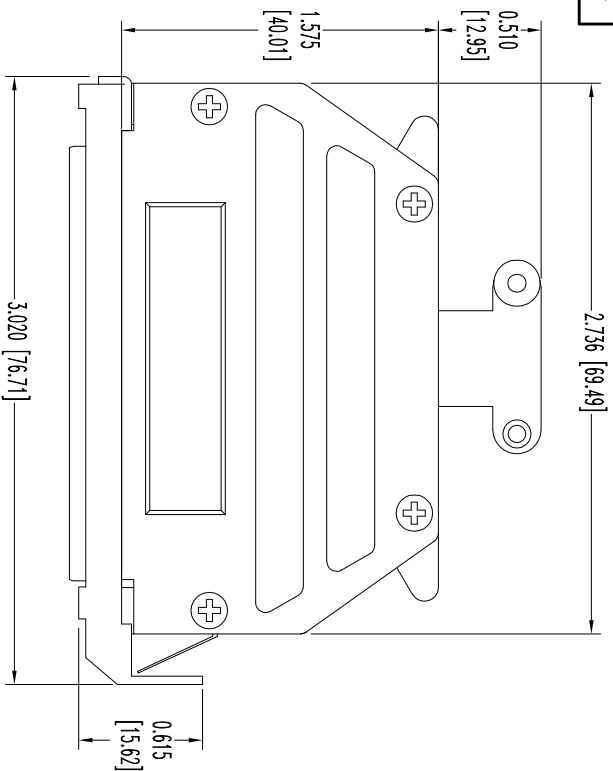


THIS DRAWING CONTAINS INFORMATION PROPRIETARY TO POSITRONIC AND ITS SUBSIDIARIES. POSITRONIC BELIEVES THE DATA ON THIS DRAWING TO BE RELIABLE. SINCE THE USER SHALL BE RESPONSIBLE FOR THE PROPER USE OF THE INFORMATION CONTAINED HEREIN, POSITRONIC ASSUMES NO RESPONSIBILITY FOR RESULTS OBTAINED OR DAMAGES INCURRED FROM USE OF SUCH INFORMATION IN WHOLE OR IN PART.



37X FEMALE CONTACT
ENLARGED

- NOTES:
- MATERIALS AND FINISHES:**
 INSULATOR: GLASS FILLED DAP PER ASTM-D-5948, SD6-F, UL 94V-0, GREEN COLOR.
 CONTACTS: PRECISION MACHINED HIGH TENSILE COPPER ALLOY WITH BERYLLIUM COPPER CLIP, GOLD FLASH OVER NICKEL PLATE.
 SHELLS: STEEL WITH TIN PLATE.
 HOOD AND CABLE CLAMPS: ZINC, DIE CAST.
 LOCKARM: STEEL, NICKEL PLATE.
 COVER SCREWS: STEEL, NICKEL PLATE.
 MOUNTING SCREWS: STAINLESS STEEL, PASSVATED.
 - ELECTRICAL CHARACTERISTICS:**
 CONTACT CURRENT RATING: 7.5 AMPS NOMINAL.
 INITIAL CONTACT RESISTANCE: 0.005 OHMS MAXIMUM.
 INSULATOR RESISTANCE: 5 G OHMS.
 WORKING VOLTAGE: 300 V r.m.s.
 - WORKING TEMPERATURE:** -55°C TO +125°C.
 - DIMENSIONS ARE IN INCHES [MILLIMETERS].**

DATE	REV	REVISION RECORD	APP	DR	CK
5-20-09	NC	ECO 31051	RCW	ME	TK

SK10720

		POSITRONIC INDUSTRIES INC. www.connectpositronic.com		FSCM 28198		
		RD SERIES	SCALE N.T.S.	DRAWN BY T. KEPPLEY	DATE 5-20-09	DRAWING NUMBER SK10720
DECIMAL TOL. ± 0.015 [0.38]	TITLE RD37S10GV1X					
ANGULAR TOL. ± 5°						