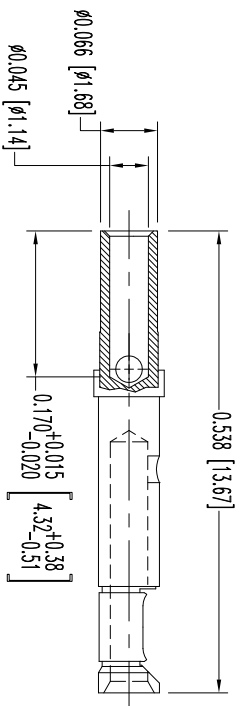
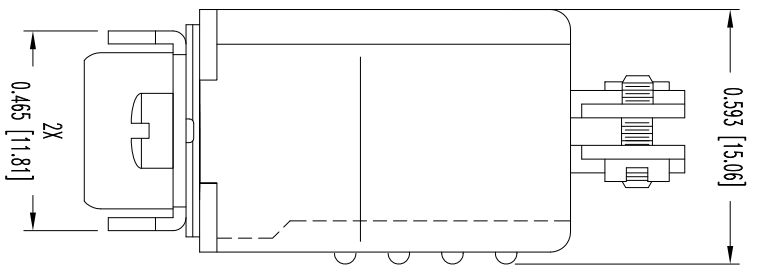
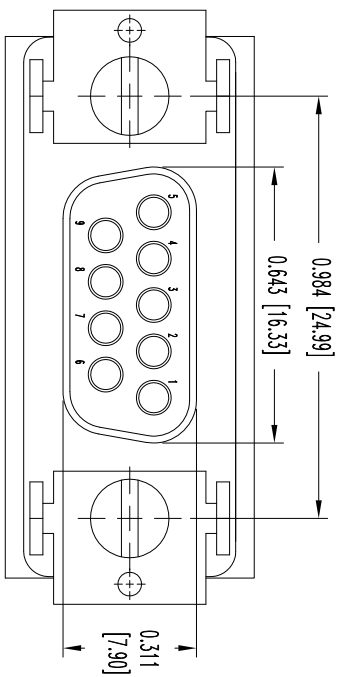
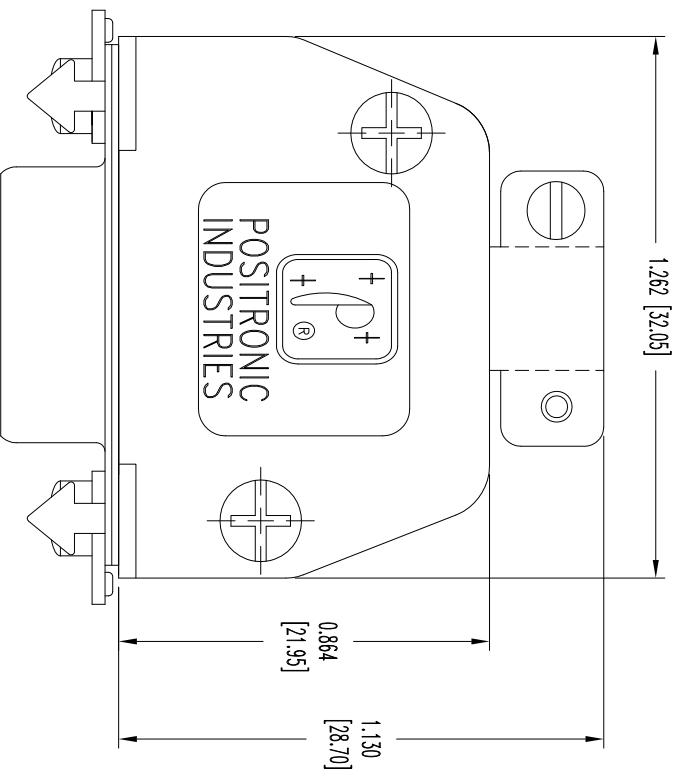


THIS DRAWING CONTAINS INFORMATION PROPRIETARY TO POSITRONIC AND ITS SUBSIDIARIES. POSITRONIC BELIEVES THE DATA ON THIS DRAWING TO BE RELIABLE, SINCE THE INFORMATION WAS OBTAINED FROM THE MANUFACTURING PROCESS. POSITRONIC ASSUMES NO RESPONSIBILITY FOR RESULTS OBTAINED OR DAMAGES INCURRED FROM USE OF SUCH INFORMATION IN WHOLE OR IN PART.



9X FEMALE CONTACT

- NOTES:
1. MATERIALS AND FINISHES:
INSULATOR: GLASS FILLED DAP PER ASTM-D5948, TYPE SDG-F, UL 94V-0, COLOR: GREEN.
CONTACTS: PRECISION MACHINED COPPER ALLOY, GOLD FLASH OVER NICKEL PLATE.
SHELLS: STEEL, ZINC PLATE WITH CHROMATE SEAL.
HOOD: GLASS FILLED POLYESTER, UL 94V-0, COLOR: BLACK.
LOCK TABS: STEEL WITH NICKEL PLATE.
 2. DETAILED PRODUCT, MECHANICAL, AND ELECTRICAL INFORMATION IS AVAILABLE IN THE LATEST STANDARD DENSITY D-SUB PRODUCT PUBLICATION. VISIT CONNECTPOSITRONIC.COM/PRODUCTS/45/STANDARDENSITYD-SUBMINIATURE OR CONNECTPOSITRONIC.COM.
 3. DIMENSIONS ARE IN INCHES [MILLIMETERS].

DATE	REV	REVISION RECORD	APP	DR	CK
6-03	13	NC	ECO	39664	COLM BS COLM

SK15150



POSITRONIC INDUSTRIES INC.
www.connectpositronic.com

FSCM 28198

RD SERIES

SCALE
N.T.S.

DRAWN BY
B SHELLBOY

DECIMAL TOL.
± 0.015 [0.38]

TITLE

APPROVED BY
COLM

RD9S10JV50

ANGULAR TOL.
± 5°

DATE
6-03-13

DRAWING NUMBER
SK15150

REV.
NC