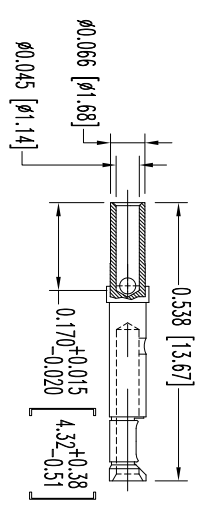
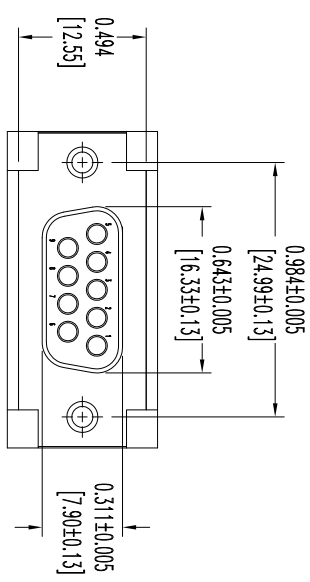
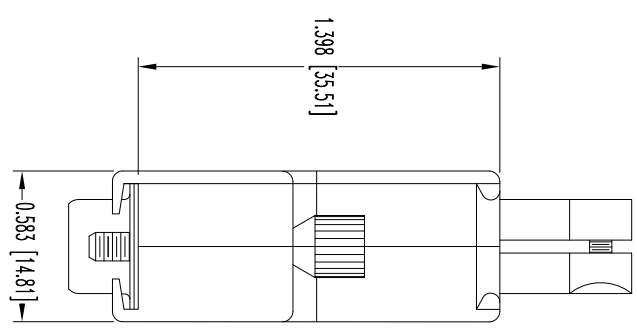
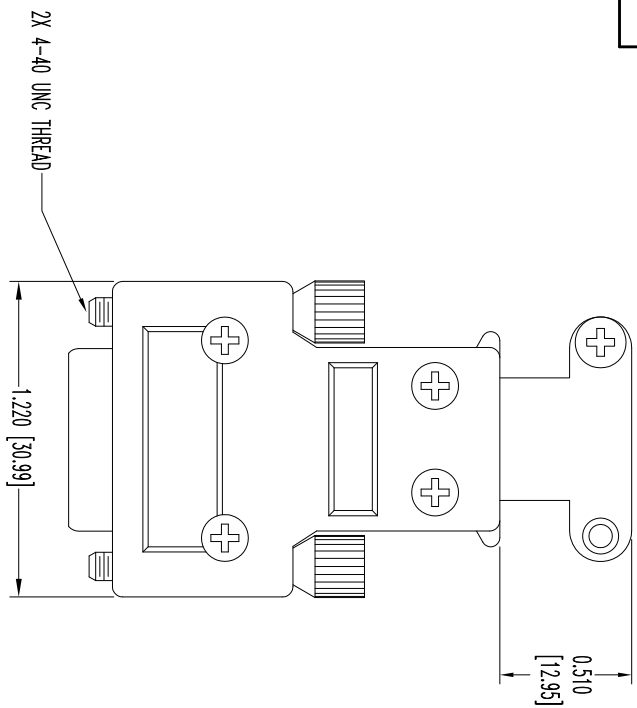


THIS DRAWING CONTAINS INFORMATION PROPRIETARY TO POSITRONIC AND ITS SUBSIDIARIES. POSITRONIC BELIEVES THE DATA ON THIS DRAWING TO BE RELIABLE, SINCE THE INFORMATION HAS BEEN OBTAINED FROM THE OWNERSHIP AND USE OF THE PRODUCT DESCRIBED. POSITRONIC ASSUMES NO RESPONSIBILITY FOR RESULTS OBTAINED OR DAMAGES INCURRED FROM USE OF SUCH INFORMATION IN WHOLE OR IN PART.



9X FEMALE CONTACT (ENLARGED)

DATE	REV	REVISION RECORD	APP	DR	CK
10-01-12	NC	ECO 37184	COLF	BS	COLF

SK14453

NOTES:
1. MATERIALS AND FINISHES:
INSULATOR: GLASS FILLED DAP PER ASTM-D5948, SD6-F, UL 94V-0, COLOR: GREEN.
CONTACTS: PRECISION MACHINED COPPER ALLOY WITH BERYLLIUM COPPER CLIP, GOLD FLASH OVER NICKEL PLATE.
SHELS: STEEL WITH TIN PLATE.
HOOD AND CABLE CLAMPS: DIE CAST ZINC.
JACKSCREWS: STEEL WITH NICKEL PLATE.
SCREWS: STEEL WITH NICKEL PLATE.

2. DETAILED PRODUCT, MECHANICAL, AND ELECTRICAL INFORMATION IS AVAILABLE IN THE LATEST STANDARD DENSITY D-SUB PRODUCT PUBLICATION. VISIT CONNECTPOSITRONIC.COM/PRODUCTS/45/STANDARDENSITY-D-SUBMINIATURE OR CONNECTPOSITRONIC.COM.

3. DIMENSIONS ARE IN INCHES [MILLIMETERS].

<p>POSITRONIC INDUSTRIES INC. www.connectpositronic.com</p>		<p>RD SPRINGS</p>		<p>SCALE: N.T.S.</p>	
		<p>RD9S10GFX</p>		<p>DRAWN BY: B SHELLBOY APPROVED BY: COLE</p>	
<p>DATE: 10-01-12</p>		<p>DRAWING NUMBER: SK14453</p>		<p>REV: NC</p>	
<p>DECIMAL TOL: ± 0.015 [0.38]</p>		<p>ANGULAR TOL: ± 5°</p>		<p>FSCM 28198</p>	