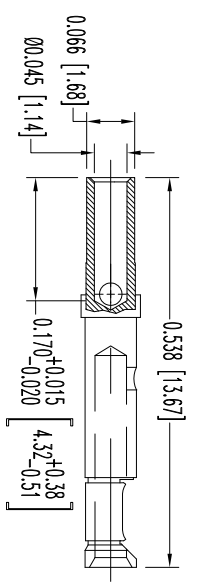
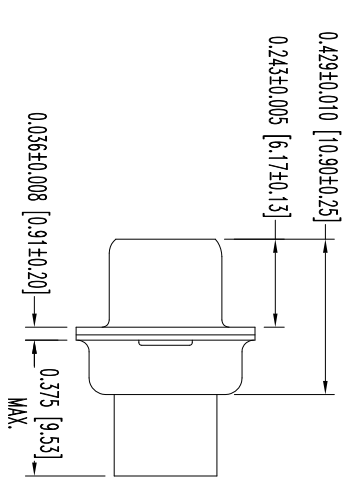
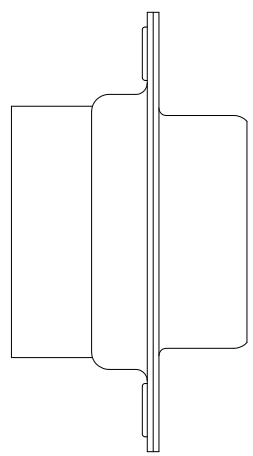
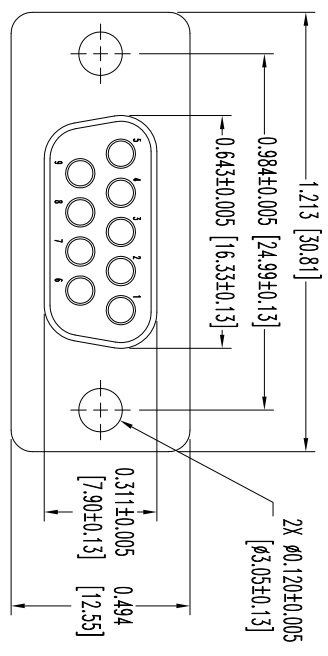


THIS DRAWING CONTAINS INFORMATION PROPRIETARY TO POSITRONIC AND ITS SUBSIDIARIES. POSITRONIC BELIEVES THE DATA ON THIS DRAWING TO BE RELIABLE, SINCE THE USER HAS NOTIFIED POSITRONIC OF ANY DISCREPANCY. POSITRONIC ASSUMES NO RESPONSIBILITY FOR RESULTS OBTAINED OR DAMAGES INCURRED FROM USE OF SUCH INFORMATION IN WHOLE OR IN PART.




9X FEMALE CONTACT
ENLARGED

- NOTES:
1. MATERIALS AND FINISHES:
INSULATOR: GLASS FILLED DAP PER ASTM-D-5948, SOG-F, UL 94V-0, GREEN COLOR.
CONTACTS: PRECISION MACHINED COPPER ALLOY GOLD FLASH OVER NICKEL PLATE.
SHELLS: STEEL WITH TIN PLATE.
 2. DETAILED PRODUCT, ELECTRICAL, AND MECHANICAL INFORMATION IS AVAILABLE IN THE LATEST STANDARD DENSITY D-SUB PRODUCT PUBLICATION. VISIT CONNECTPOSITRONIC.COM/PRODUCTS/45/STANDARDENSITYD-SUBMINIATURE OR CONNECTPOSITRONIC.COM.
 3. CONNECTORS ARE COMPLIANT TO THE CURRENT ROHS DIRECTIVE.
 4. DIMENSIONS ARE IN INCHES [MILLIMETERS].

DATE	REV	REVISION/RECORD	APP	DR	CK
5-26-09	09	NC	ECO	31107	RCW ME PK
	11	A	ECO	33679	COLL ME COLL
	12	B	ECO	37991	COLL BE COLL

SK10801

 POSITRONIC INDUSTRIES INC. www.connectpositronic.com		SCALE		DRAWN BY	
		RD STRIERS		ME	
DECIMAL TOL. ± 0.015 [0.38]		N.T.S.		APPROVED BY	
TITLE		RD9S1000X/AA		R WILLIAMS	
DATE		5-26-09		DRAWING NUMBER	
ANGULAR TOL. ± 5°		SK10801		REV.	
				B	

FSCM 28198