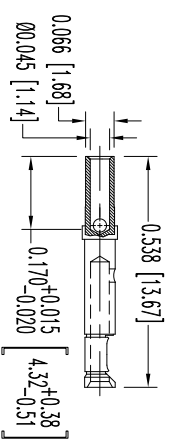
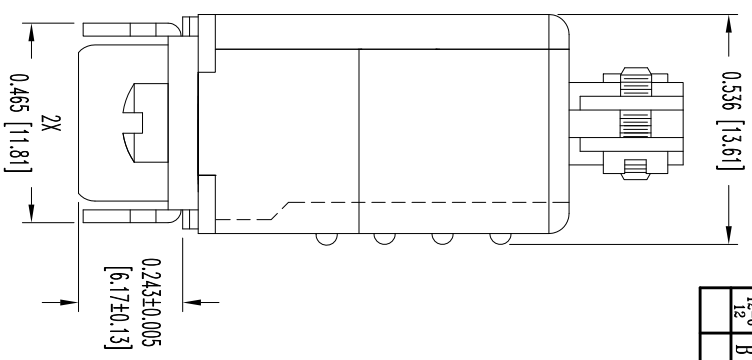
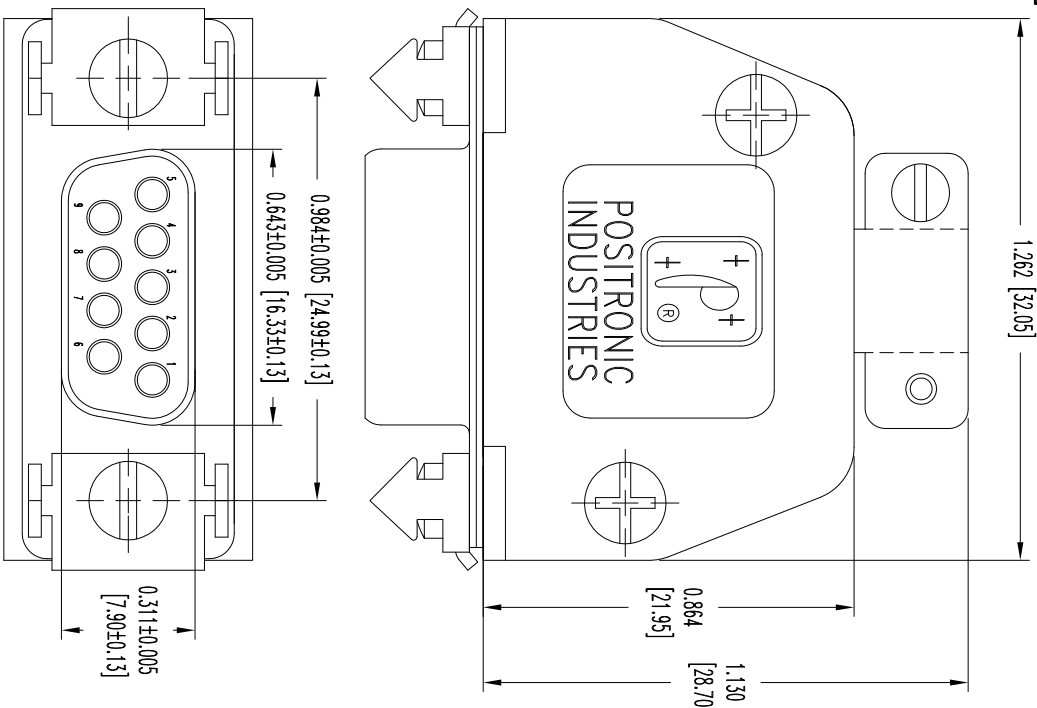


THIS DRAWING CONTAINS INFORMATION PROPRIETARY TO POSITRONIC AND ITS SUBSIDIARIES. POSITRONIC BELIEVES THE DATA ON THIS DRAWING TO BE RELIABLE, SINCE THE TECHNICAL DRAWING PERSONNEL HAVE REVIEWED THE DESIGN AND RISK. POSITRONIC ASSUMES NO RESPONSIBILITY FOR RESULTS OBTAINED OR DAMAGES INCURRED FROM USE OF SUCH INFORMATION IN WHOLE OR IN PART.




9X FEMALE CONTACT

- NOTES:
1. MATERIALS AND FINISHES:
INSULATOR: GLASS FILLED DAP, PER ASTM-D-5948, SD6-F, UL 94V-0, GREEN COLOR.
CONTACTS: PRECISION MACHINED COPPER ALLOY GOLD FLASH OVER NICKEL PLATE.
SHELLS: STEEL, ZINC PLATE WITH CHROMATE SEAL.
HOOD: GLASS FILLED NYLON, 94V-0.
LOCK TAB: STEEL, NICKEL PLATE.
 2. DETAILED PRODUCT, ELECTRICAL, AND MECHANICAL INFORMATION IS AVAILABLE IN THE LATEST STANDARD DENSITY D-SUBMINIATURE PRODUCT PUBLICATION. VISIT CONNECTPOSITRONIC.COM/PRODUCTS/45/STANDARDENSITYD-SUBMINIATURE OR CONNECTPOSITRONIC.COM.
 3. CONNECTORS ARE COMPLIANT TO THE CURRENT ROHS DIRECTIVE.
 4. DIMENSIONS ARE IN INCHES [MILLIMETERS].

DATE	REV	REVISION/RECORD	APP	DR	CK
4-28-09	NC	ECO 31004	RCW	BS	COLF
2-16-11	A	ECO 33687	COLF	ME	COLF
12-6-12	B	ECO 37926	COLF	BE	COLF

SK10635



POSITRONIC INDUSTRIES INC.
www.connectpositronic.com

FSCM 28198

RD SERIES

SCALE: N.T.S.

DRAWN BY: B SHELLBOY

APPROVED BY: R WILLIAMS

DECIMAL TOL. ± 0.015 [0.38]

ANGULAR TOL. ± 5°

DATE: 4-28-09

DRAWING NUMBER: SK10635

TITLE: RD9S101V30/AA

REV: B