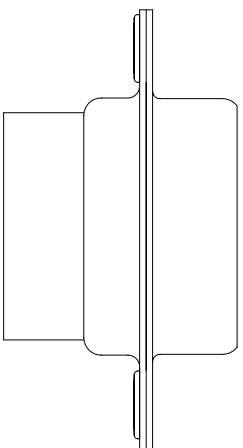
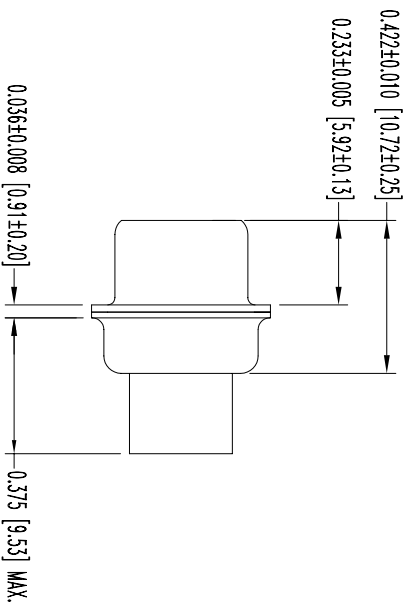
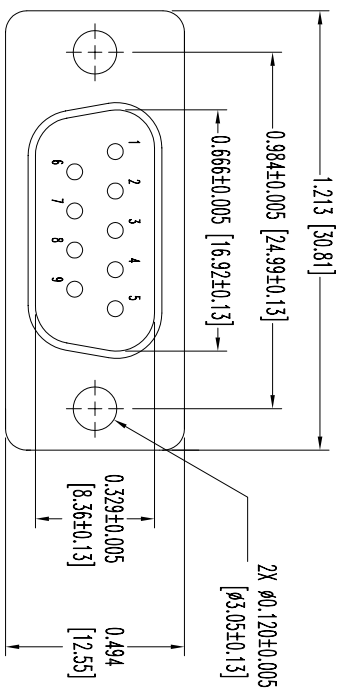


POSITRONIC INDUSTRIES BELIEVES THE DATA ON THIS DRAWING TO BE RELIABLE SINCE THE TECHNICAL INFORMATION IS GIVEN FREE OF CHARGE, THE USER EMPLOYS SUCH INFORMATION AT HIS OWN DISCRETION AND ASSUMES ALL RESPONSIBILITY FOR RESULTS OBTAINED OR DAMAGES INCURRED FROM USE OF SUCH INFORMATION IN WHOLE OR IN PART.

DATE	REV	REVISION RECORD	APP	DR	CK
11-5-07	NC	ECO 28611	RCW	YK	COLM

SK9066

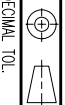


- NOTES:
1. MATERIALS AND FINISHES:
INSULATOR: GLASS FILLED DAP PER ASTM-D-5948, S06-F, UL 94V-0, GREEN COLOR.
SHELLS: STEEL, ZINC PLATE WITH CHROMATE SEAL.
 2. ELECTRICAL CHARACTERISTICS:
INSULATOR RESISTANCE: 5 G OHMS.
WORKING VOLTAGE: 300 V r.m.s.
 3. WORKING TEMPERATURE: -55°C TO +125°C.
 4. DIMENSIONS ARE IN INCHES [MILLIMETERS].



POSITRONIC INDUSTRIES INC.
www.connectpositronic.com

FSCM 28198



DECIMAL TOL.
± 0.015 [0.38]

SCALE: N.T.S.
DRAWN BY: YK
APPROVED BY: RCW

TITLE: RD SPRINGS
RD9M00000

ANGULAR TOL.
± 5°

DATE: 11-5-07
DRAWING NUMBER: SK9066
REV: NC