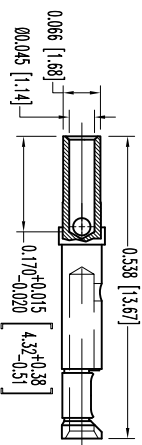
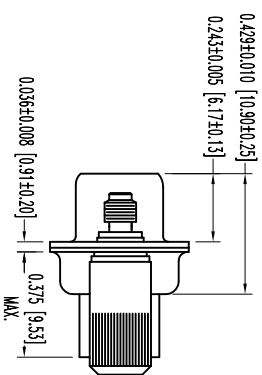
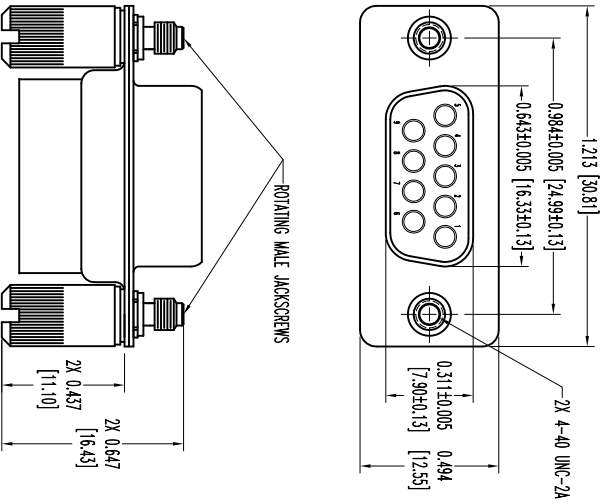


THIS DRAWING CONTAINS INFORMATION PROPRIETARY TO POSTTRONIC INDUSTRIES. UNAUTHORIZED REPRODUCTION OR DISSEMINATION OF THIS INFORMATION IS STRICTLY PROHIBITED. THE INFORMATION IS PROVIDED AS IS WITHOUT WARRANTY OF ANY KIND. POSTTRONIC INDUSTRIES ASSUMES NO RESPONSIBILITY FOR THE RESULTS OF ANY MACHINING OPERATIONS PERFORMED FROM USE OF THIS DRAWING IN ANY MANNER.


DATE	REV	REVISION RECORD	APP	DR	CHK
10-06-10	NC	ECO 33093	TK	BS	TK

SK11841



9X FEMALE CONTACT
ENLARGED

- NOTES:
- MATERIALS AND FINISHES:
INSULATOR: GLASS FILLED DAP PER ASTM-D5948, TYPE SD6-F, UL 94V-0, COLOR: GREEN.
CONTACTS: PRECISION MACHINED COPPER ALLOY WITH BERYLLIUM COPPER CLIP, GOLD FLASH OVER NICKEL PLATE.
SHELS: STEEL WITH TIN PLATE.
JACKSCREWS: STEEL, ZINC PLATE WITH CHROMATE SEAL.
 - DETAILED PRODUCT, MECHANICAL, AND ELECTRICAL INFORMATION IS AVAILABLE IN THE LATEST STANDARD DENSITY D-SUB PRODUCT PUBLICATION. VISIT CONNECTPOSTRONIC.COM/PRODUCTS/45/STANDARD-DENSITY-D-SUB-PRODUCT-PUBLICATION. VISIT
 - DIMENSIONS ARE IN INCHES [MILLIMETERS].

 POSTTRONIC INDUSTRIES, INC. www.connectpostronic.com		SCALE		PSCK 28198	
		RD SERIES		DESIGN BY P. SHERRARDY	
DECIMAL TOL.		TITLE		APPROVED BY T. KERRY	
± 0.015 [0.38]		RD9S100EX		DATE	
ANGULAR TOL.		SK11841		DRAWING NUMBER	
± 3°		10-06-10		REV.	
				NC	