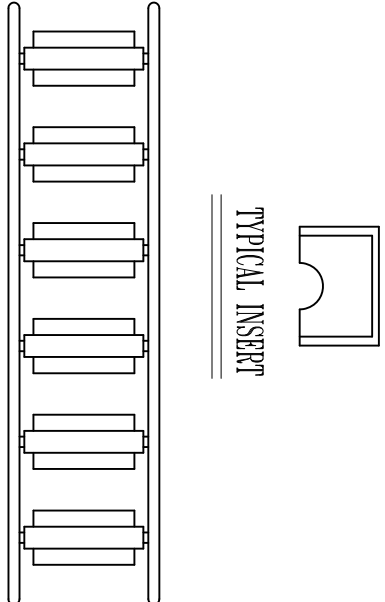
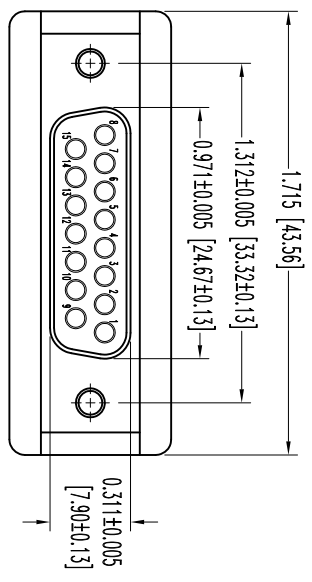
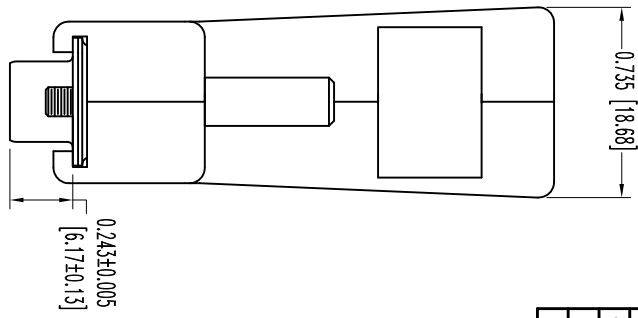
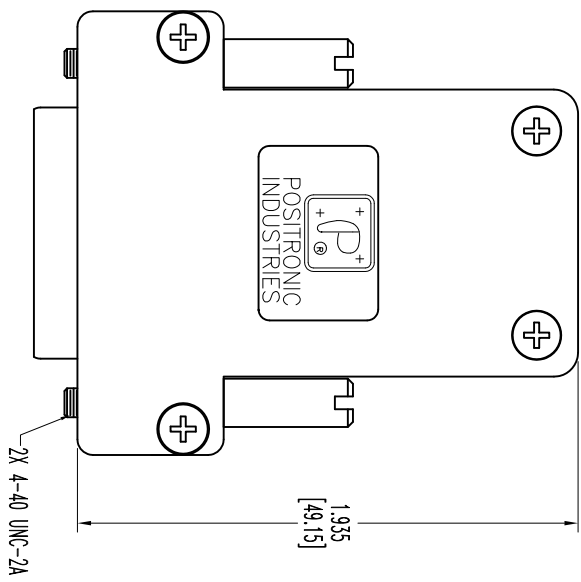
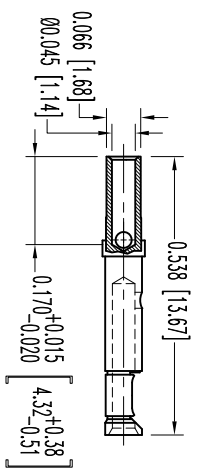


THIS DRAWING CONTAINS INFORMATION PROPRIETARY TO POSITRONIC AND ITS SUBSIDIARIES. POSITRONIC BELIEVES THE DATA ON THIS DRAWING TO BE RELIABLE, SINCE THE USER HAS TAKEN THE NECESSARY PRECAUTIONS TO AVOID USER ERROR. POSITRONIC ASSUMES NO RESPONSIBILITY FOR RESULTS OBTAINED OR DAMAGES INCURRED FROM USE OF SUCH INFORMATION IN WHOLE OR IN PART.



- NOTES:
1. MATERIALS AND FINISHES:
 INSULATOR: GLASS FILLED DAP PER ASTM-D-5948, SOG-F, UL 94V-0, GREEN COLOR.
 SHELLS: STEEL, ZINC PLATE WITH CHROMATE SEAL.
 CONTACTS: PRECISION MACHINED COPPER ALLOY GOLD FLASH OVER NICKEL PLATE.
 HOOD AND INSERT: COMPOSITE, CONDUCTIVE VOLUME RESISTIVITY (1.0 OHM-cm MAX.), UL94V-0.
 ATTENUATION: 40+ DECIBELS.
 JACKSCREWS: STEEL, ZINC PLATE CHROMATE SEAL.
 SCREWS: STAINLESS STEEL, PASSIVATED.
 2. DETAILED PRODUCT, ELECTRICAL, AND MECHANICAL INFORMATION IS AVAILABLE IN THE LATEST STANDARD DENSITY D-SUB PRODUCT PUBLICATION. VISIT CONNECTPOSITRONIC.COM/PRODUCTS/45/STANDARDENSITYD-SUBMINIATURE OR CONNECTPOSITRONIC.COM.
 3. DIMENSIONS ARE IN INCHES [MILLIMETERS].



		POSITRONIC INDUSTRIES INC. www.connectpositronic.com		FSC# 28198	
		RD SERIES	SCALE N.T.S.	DRAWN BY R WILLIAMS	ME
DECIMAL TOL. ± 0.015 [0.38]		TITLE RD15S10Z00		DATE 4-29-09	
ANGULAR TOL. $\pm 5^\circ$		DRAWING NUMBER SK10642		REV. A	

DATE	REV	REVISION RECORD	APP	DR	CK
4-29-09	NC	ECO 31006	TK	ME	COM
1-24-11	A	ECO 33562	TK	ME	TK

SK10642