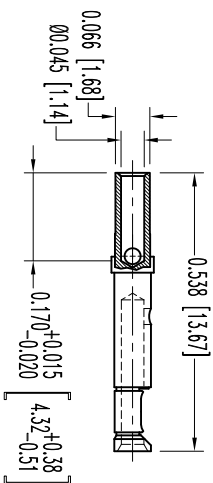
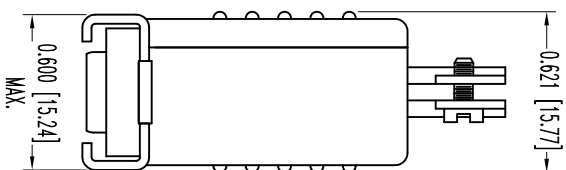
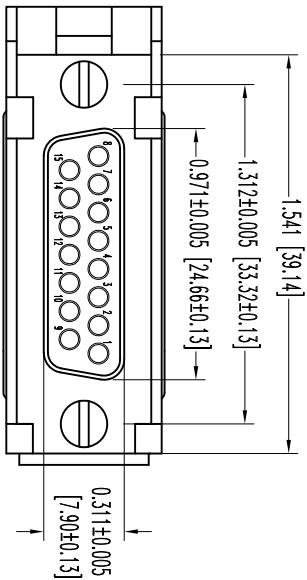
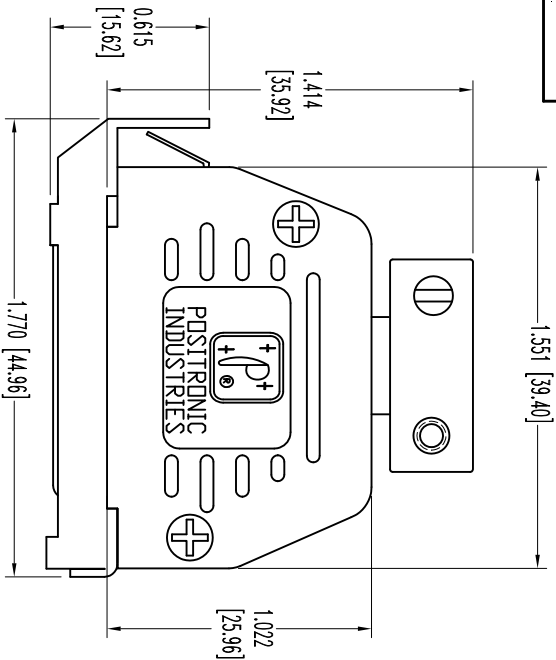


THIS DRAWING CONTAINS INFORMATION PROPRIETARY TO POSITRONIC AND ITS SUBSIDIARIES. POSITRONIC BELIEVES THE DATA ON THIS DRAWING TO BE RELIABLE, SINCE THE USER HAS AGREED TO USE IT AS SHOWN. POSITRONIC MAKES NO WARRANTY, REPRESENTATION OR GUARANTEE, EXPRESS OR IMPLIED, AS TO THE ACCURACY, COMPLETENESS, OR FITNESS FOR USE OF THE INFORMATION AND RISK. POSITRONIC ASSUMES NO RESPONSIBILITY FOR SUCH INFORMATION IN WHOLE OR IN PART.



15X FEMALE CONTACT
ENLARGED

- NOTES:
1. MATERIAL & FINISHES:
INSULATOR: GLASS FILLED DAP PER ASTM-D-5948, SDG-F. UL 94V-0, GREEN COLOR.
CONTACTS: PRECISION MACHINED COPPER ALLOY GOLD FLASH OVER NICKEL PLATE.
SHELLS: STEEL, ZINC PLATE WITH CHROMATE SEAL.
HOOD: GLASS FILLED NYLON, 94V-0, BLACK.
LOCK LEVER: STEEL, NICKEL PLATE.
CABLE CLAMPS: STEEL, NICKEL PLATE.
CABLE CLAMP SCREWS: BRASS, ZINC PLATE WITH CHROMATE SEAL.
SCREWS: STEEL, ZINC PLATE WITH CHROMATE SEAL.
 2. DETAILED PRODUCT, ELECTRICAL, AND MECHANICAL INFORMATION IS AVAILABLE IN THE LATEST STANDARD DENSITY D-SUB PRODUCT PUBLICATION. VISIT CONNECTPOSITRONIC.COM/PRODUCTS/45/STANDARDENSITYD-SUBMINIATURE OR CONNECTPOSITRONIC.COM.
 3. DIMENSIONS ARE IN INCHES [MILLIMETERS].

DATE	REV	REVISION/RECORD	APP	DR	CK
4-29-09	NC	ECO 31006	TK	ME	COM
1-24-11	A	ECO 33562	TK	ME	TK

SK10641



POSITRONIC INDUSTRIES INC.
www.connectpositronic.com

FSC# 28198

DECIMAL TOL.	± 0.015 [0.38]	SCALE	N.T.S.	DRAWN BY	ME
ANGULAR TOL.	± 5°	RD SERIES	RD15S10JVL0	APPROVED BY	T KEPPLEY

DATE	4-29-09	DRAWING NUMBER	SK10641	REV.	A
------	---------	----------------	---------	------	---