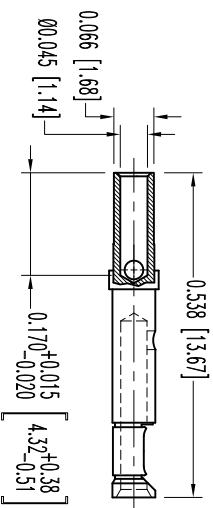
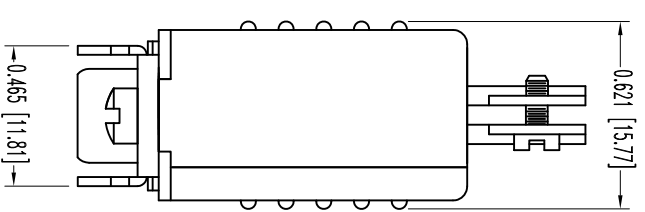
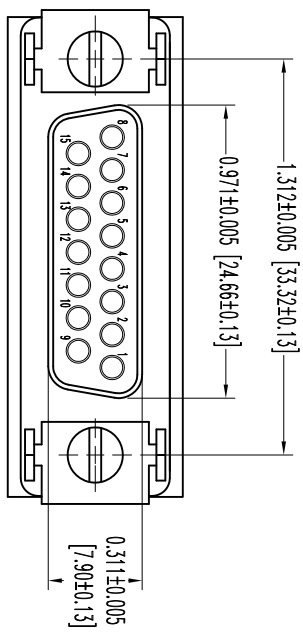
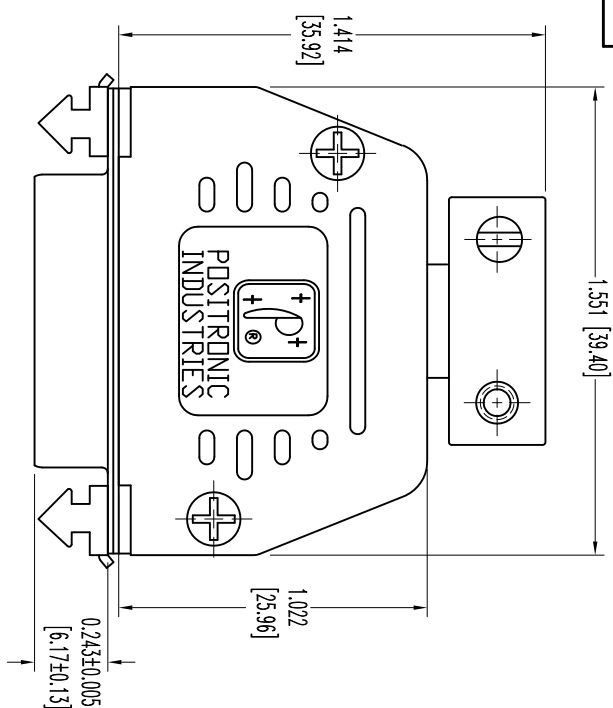


THIS DRAWING CONTAINS INFORMATION PROPRIETARY TO POSTRONIC AND ITS SUBSIDIARIES. POSTRONIC BELIEVES THE DATA ON THIS DRAWING TO BE RELIABLE. SINCE THE USER OF THIS DRAWING IS GIVEN RELIABLE INFORMATION, POSTRONIC ASSUMES NO RESPONSIBILITY FOR RESULTS OBTAINED OR DAMAGES INCURRED FROM USE OF SUCH INFORMATION IN WHOLE OR IN PART.




15X FEMALE CONTACT
 ENLARGED

DATE	REV	REVISION RECORD	APP	DR	CK
4-28-09	NC	ECO 31006	TK	ME	COM
1-24-11	A	ECO 33562	TK	ME	TK

SK10640

- NOTES:
- MATERIAL & FINISHES:**
 INSULATOR: GLASS FILLED DAP PER ASTM-D-5948, SDG-F, UL 94V-0, GREEN COLOR.
 CONTACTS: PRECISION MACHINED COPPER ALLOY GOLD FLASH OVER NICKEL PLATE.
 SHELLS: STEEL, ZINC PLATE WITH CHROMATE SEAL.
 HOOD: GLASS FILLED NYLON, 94V-0, BLACK.
 LOCK LEVER: STEEL, NICKEL PLATE.
 CABLE CLAMPS: STEEL, NICKEL PLATE.
 CABLE CLAMP SCREWS: BRASS, ZINC PLATE WITH CHROMATE SEAL.
 SCREWS: STEEL, ZINC PLATE WITH CHROMATE SEAL.
 - DETAILED PRODUCT, ELECTRICAL, AND MECHANICAL INFORMATION IS AVAILABLE IN THE LATEST STANDARD DENSITY D-SUB PRODUCT PUBLICATION. VISIT CONNECTPOSTRONIC.COM/PRODUCTS/45/STANDARDDENSITYD-SUBMINIATURE OR CONNECTPOSTRONIC.COM.
 - DIMENSIONS ARE IN INCHES [MILLIMETERS].



POSTRONIC INDUSTRIES INC.
www.connectpostronic.com

FSC# 28198

DATE	4-28-09	DRAWING NUMBER	SK10640	REV.	A
ANGULAR TOL.	± 5°	DECIMAL TOL.	± 0.015 [0.38]		
TITLE	RD15S10JV30				
RD SERIES	RD SERIES	SCALE	N.T.S.	DRAWN BY	ME
		APPROVED BY	T. KEPPLEY		