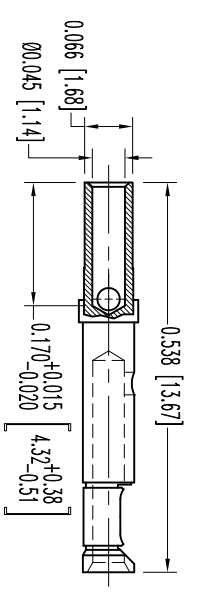
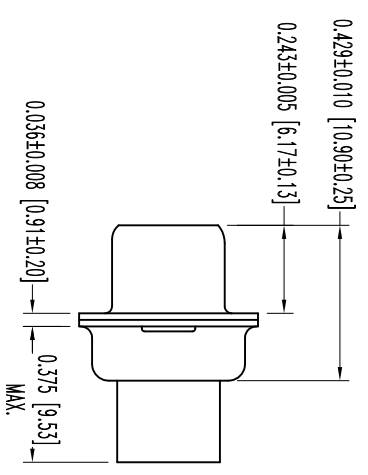
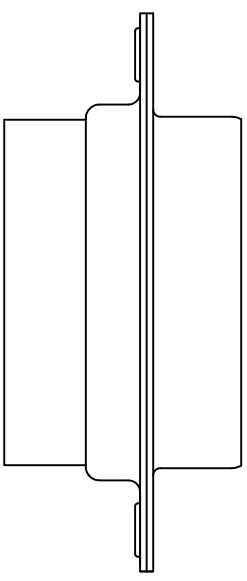
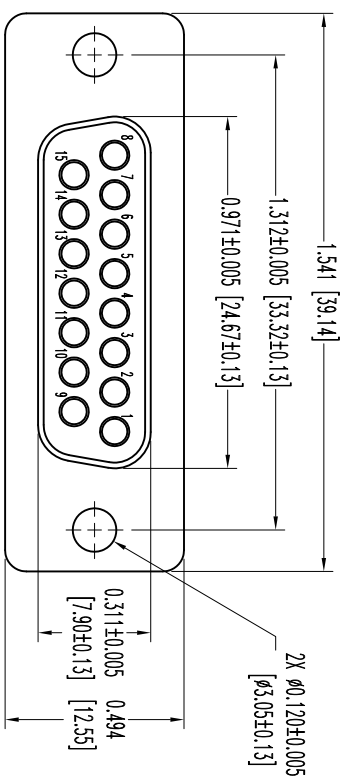


THIS DRAWING CONTAINS INFORMATION PROPRIETARY TO POSITRONIC INDUSTRIES INC. THE DATA ON THIS DRAWING TO BE RELEASED SINCE THE TECHNICAL INFORMATION IS GIVEN FREE OF CHARGE. THE USER EMPLOYER'S SUCH INFORMATION AT HIS OWN DISCRETION. RESULTS OBTAINED OR DAMAGES INCURRED FROM USE OF SUCH INFORMATION IN WHOLE OR IN PART.



15X FEMALE CONTACT
ENLARGED



POSITRONIC INDUSTRIES INC.
www.connectpositronic.com FSC# 28198

RD SERIES N.T.S. DRAWN BY ME
APPROVED BY R WILLIAMS

RD15S10000

DATE 4-28-09 DRAWING NUMBER SK10610 REV. B

DATE	REV	REVISION RECORD	APP	DR	OK
4-28-09	NC	ECO 31000	RCW	MR	TK
5-27-09	A	ECO 31115	RCW	MR	TK
1-21-11	B	ECO 33562	TK	MR	TK

SK10610

- NOTES:
- MATERIALS AND FINISHES:
INSULATOR: GLASS FILLED DAP PER ASTM-D-5948, SOG-F, UL 94V-0, GREEN COLOR.
CONTACTS: PRECISION MACHINED COPPER ALLOY GOLD FLASH OVER NICKEL PLATE.
SHELLS: STEEL, ZINC PLATE WITH CHROMATE SEAL.
 - DETAILED PRODUCT, ELECTRICAL, AND MECHANICAL INFORMATION IS AVAILABLE IN THE LATEST STANDARD DENSITY D-SUB PRODUCT PUBLICATION. VISIT CONNECTPOSITRONIC.COM/PRODUCTS/45/STANDARDENSITYD-SUBMINIATURE OR CONNECTPOSITRONIC.COM.
 - DIMENSIONS ARE IN INCHES [MILLIMETERS].