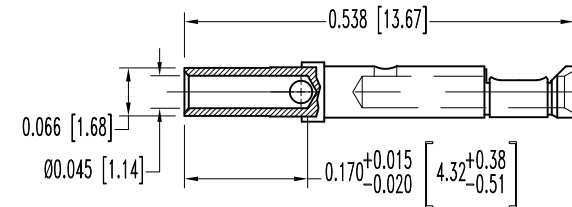
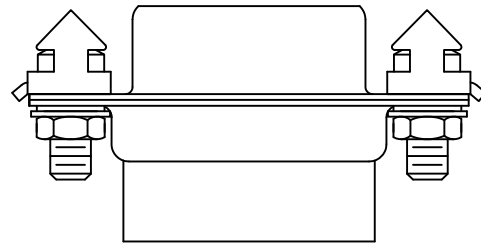
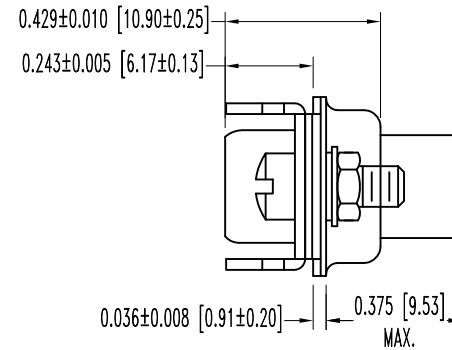
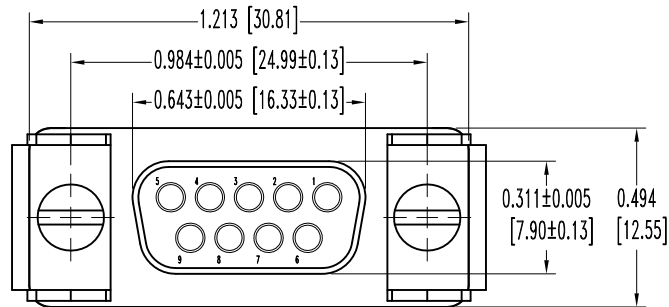


THIS DRAWING CONTAINS INFORMATION PROPRIETARY TO POSITRONIC AND ITS SUBSIDIARIES. POSITRONIC BELIEVES THE DATA ON THIS DRAWING TO BE RELIABLE, SINCE THE TECHNICAL INFORMATION IS GIVEN FREE OF CHARGE, THE USER EMPLOYS SUCH INFORMATION AT HIS OWN DISCRETION AND RISK. POSITRONIC ASSUMES NO RESPONSIBILITY FOR RESULTS OBTAINED OR DAMAGES INCURRED FROM USE OF SUCH INFORMATION IN WHOLE OR IN PART.

SK10805

DATE	REV	REVISION RECORD	APP	DR	CK
5-26-09	NC	ECO 31107	RCW	ME	TK
2-14-11	A	ECO 33679	COLE	ME	COLE



9X FEMALE CONTACT  
ENLARGED

NOTES:

1. MATERIALS AND FINISHES:

INSULATORS: GLASS FILLED DAP PER ASTM-D-5948, SDG-F, UL 94V-0, GREEN COLOR.  
SHELLS: STEEL, ZINC PLATE WITH CHROMATE SEAL.  
CONTACTS: PRECISION MACHINED COPPER ALLOY GOLD FLASH OVER NICKEL PLATE.  
LOCK TABS: STEEL, NICKEL PLATE.  
HEX NUTS: BRASS, ZINC PLATE WITH CHROMATE SEAL.  
SCREWS: BRASS, ZINC PLATE WITH CHROMATE SEAL.

2. DETAILED PRODUCT, ELECTRICAL, AND MECHANICAL INFORMATION IS AVAILABLE IN THE LATEST STANDARD DENSITY D-SUB PRODUCT PUBLICATION. VISIT [CONNECTPOSITRONIC.COM/PRODUCTS/45/STANDARD DENSITY D-SUBMINIATURE](http://CONNECTPOSITRONIC.COM/PRODUCTS/45/STANDARD DENSITY D-SUBMINIATURE) OR [CONNECTPOSITRONIC.COM](http://CONNECTPOSITRONIC.COM).

3. DIMENSIONS ARE IN INCHES [MILLIMETERS].

 <b>POSITRONIC INDUSTRIES INC.</b> <a href="http://www.connectpositronic.com">www.connectpositronic.com</a>		FSCM 28198	
 DECIMAL TOL. <b>± 0.015 [0.38]</b>	<b>RD SERIES</b>	SCALE <b>N.T.S.</b>	DRAWN BY <b>ME</b>
TITLE <b>RD9S100V30</b>		APPROVED BY <b>R. WILLIAMS</b>	
ANGULAR TOL. <b>± 5°</b>	DATE <b>5-26-09</b>	DRAWING NUMBER <b>SK10805</b>	REV. <b>A</b>