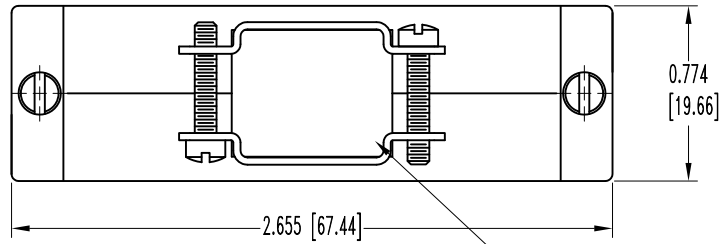


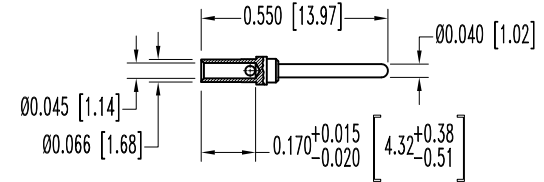
SK7924

THIS DRAWING CONTAINS INFORMATION PROPRIETARY TO POSITRONIC AND ITS SUBSIDIARIES. POSITRONIC BELIEVES THE DATA ON THIS DRAWING TO BE RELIABLE, SINCE THE TECHNICAL INFORMATION IS GIVEN FREE OF CHARGE. THE USER EMPLOYS SUCH INFORMATION AT HIS OWN DISCRETION AND RISK. POSITRONIC ASSUMES NO RESPONSIBILITY FOR RESULTS OBTAINED OR DAMAGES INCURRED FROM USE OF SUCH INFORMATION IN WHOLE OR IN PART.

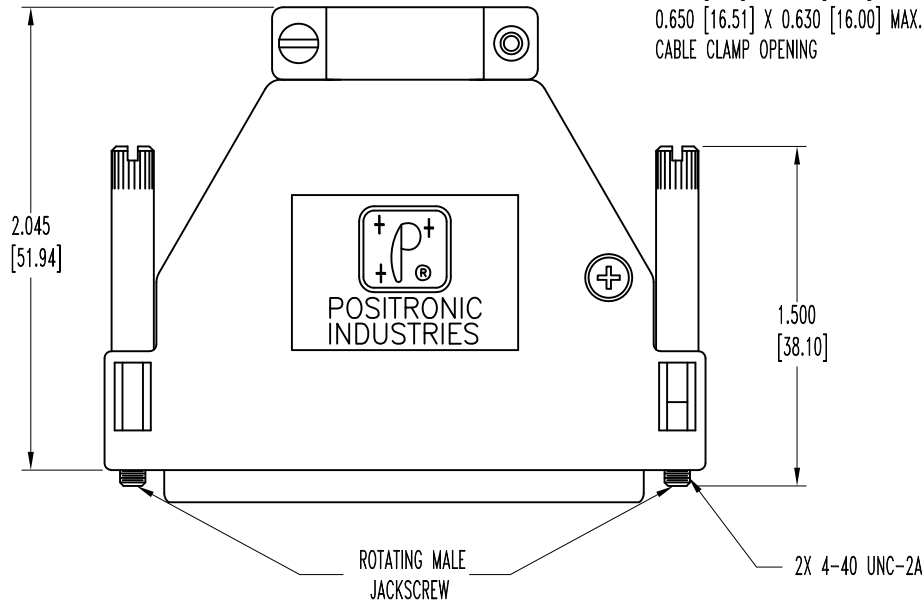
| DATE | REV | REVISION RECORD | APP | DR | CK |
|---------|-----|-----------------|------|----|------|
| 8-29-06 | NC | ECO 26587 | COLE | YK | COLE |
| 2-9-11 | A | ECO 33654 | COLE | ME | COLE |
| | | | | | |
| | | | | | |



0.230 [5.84] X 0.630 [16.00] MIN.
0.650 [16.51] X 0.630 [16.00] MAX.
CABLE CLAMP OPENING

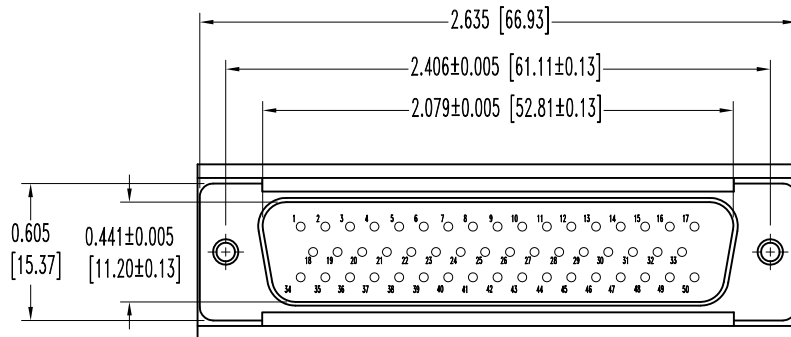


50X MALE CONTACT
ENLARGED



NOTES:

- MATERIALS AND FINISHES:
INSULATOR: GLASS FILLED DAP PER ASTM-D-5948, SDG-F, UL 94V-0, GREEN COLOR.
CONTACTS: PRECISION MACHINED COPPER ALLOY, GOLD FLASH OVER NICKEL PLATE.
SHELLS: STEEL, ZINC PLATE WITH CHROMATE SEAL.
HOOD: COMPOSITE, CONDUCTIVE
VOLUME RESISTIVITY: (1.0 OHM.-cm MAX.)
ATTENUATION: 40+ DECIBELS.
CABLE CLAMPS: STEEL WITH NICKEL PLATE.
CABLE CLAMP SCREWS: STEEL, ZINC PLATE.
COVER SCREWS: STAINLESS STEEL, PASSIVATED.
JACKSCREWS: STEEL, ZINC PLATE WITH BLUE CHROMATE SEAL.
- DETAILED PRODUCT, ELECTRICAL, AND MECHANICAL INFORMATION IS AVAILABLE IN THE LATEST STANDARD DENSITY D-SUB PRODUCT PUBLICATION. VISIT CONNECTPOSITRONIC.COM/PRODUCTS/45/STANDARD DENSITY D-SUBMINIATURE OR CONNECTPOSITRONIC.COM.
- CONNECTORS ARE ROHS COMPLIANT PER ROHS DIRECTIVE 2002/95/EC OF 27 JAN 2003.
- DIMENSIONS ARE IN INCHES [MILLIMETERS].



| | | | |
|---|--|-----------------------|--------------------------|
|  POSITRONIC INDUSTRIES INC. www.connectpositronic.com | | FSCM 28198 | |
|  | | SCALE N.T.S. | DRAWN BY YK |
| DECIMAL TOL. ± 0.015 [0.38] | | APPROVED BY S COLE | |
| TITLE RD50M10Y00/AA | | | |
| ANGULAR TOL. ± 5° | | DATE 8-29-06 | DRAWING NUMBER SK7924 |
| | | | REV. A |