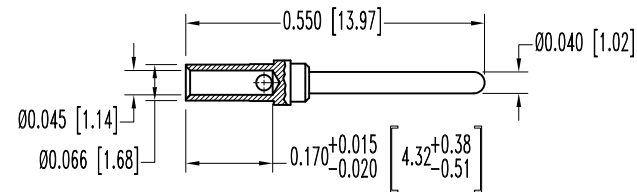
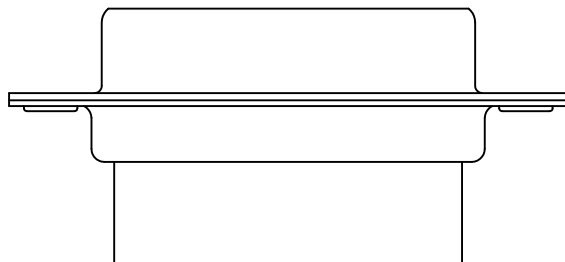
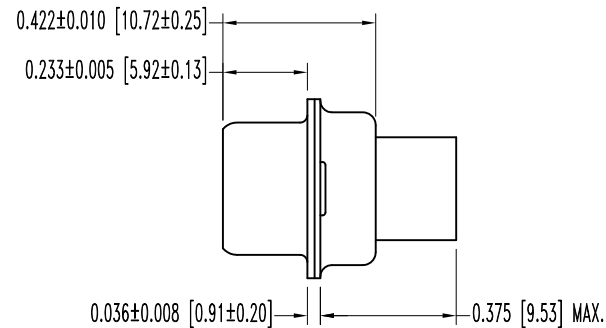
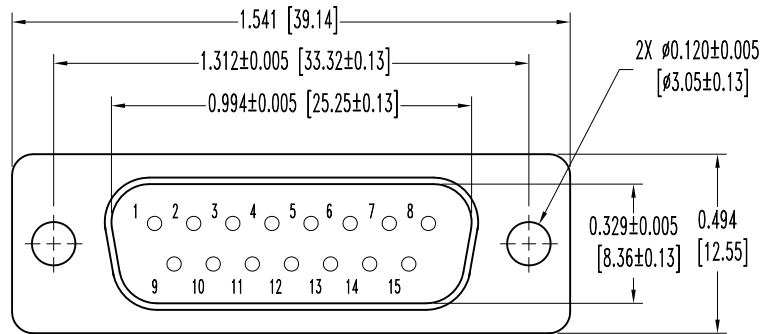


SK8736

THIS DRAWING CONTAINS INFORMATION PROPRIETARY TO POSITRONIC AND ITS SUBSIDIARIES. POSITRONIC BELIEVES THE DATA ON THIS DRAWING TO BE RELIABLE, SINCE THE TECHNICAL INFORMATION IS GIVEN FREE OF CHARGE, THE USER EMPLOYS SUCH INFORMATION AT HIS OWN DISCRETION AND RISK. POSITRONIC ASSUMES NO RESPONSIBILITY FOR RESULTS OBTAINED OR DAMAGES INCURRED FROM USE OF SUCH INFORMATION IN WHOLE OR IN PART.

DATE	REV	REVISION RECORD	APP	DR	CK
7-11-07	NC	ECO 28147	RCW	YK	COLE
1-20-11	A	ECO 33553	COLE	ME	COLE



15X MALE CONTACT  
ENLARGED

NOTES:


1. MATERIALS AND FINISHES:

INSULATOR: GLASS FILLED DAP PER ASTM-D-5948, SDG-F, UL 94V-0, GREEN COLOR.  
CONTACTS: PRECISION MACHINED COPPER ALLOY, GOLD FLASH OVER NICKEL FINISH.  
SHELLS: STEEL, ZINC PLATE WITH CHROMATE SEAL.

2. DETAILED PRODUCT, ELECTRICAL, AND MECHANICAL INFORMATION IS AVAILABLE

IN THE LATEST STANDARD DENSITY D-SUB PRODUCT PUBLICATION. VISIT  
CONNECTPOSITRONIC.COM/PRODUCTS/45/STANDARD DENSITY D-SUBMINIATURE  
OR CONNECTPOSITRONIC.COM.

3. DIMENSIONS ARE IN INCHES [MILLIMETERS].

 <b>POSITRONIC INDUSTRIES INC.</b> www.connectpositronic.com		<b>FSCM 28198</b>	
 DECIMAL TOL. $\pm 0.015$ [0.38]	<b>RD SERIES</b>	SCALE <b>N.T.S.</b>	DRAWN BY <b>YK</b>
	TITLE <b>RD15M10000</b>		
ANGULAR TOL. $\pm 5^\circ$	DATE <b>7-11-07</b>	DRAWING NUMBER <b>SK8736</b>	REV. <b>A</b>
		APPROVED BY <b>R WILLIAMS</b>	