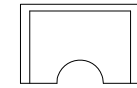
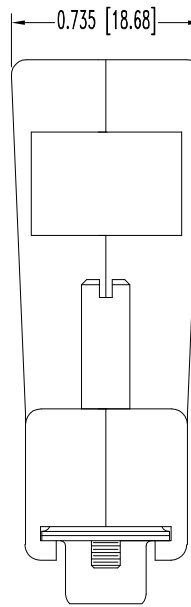
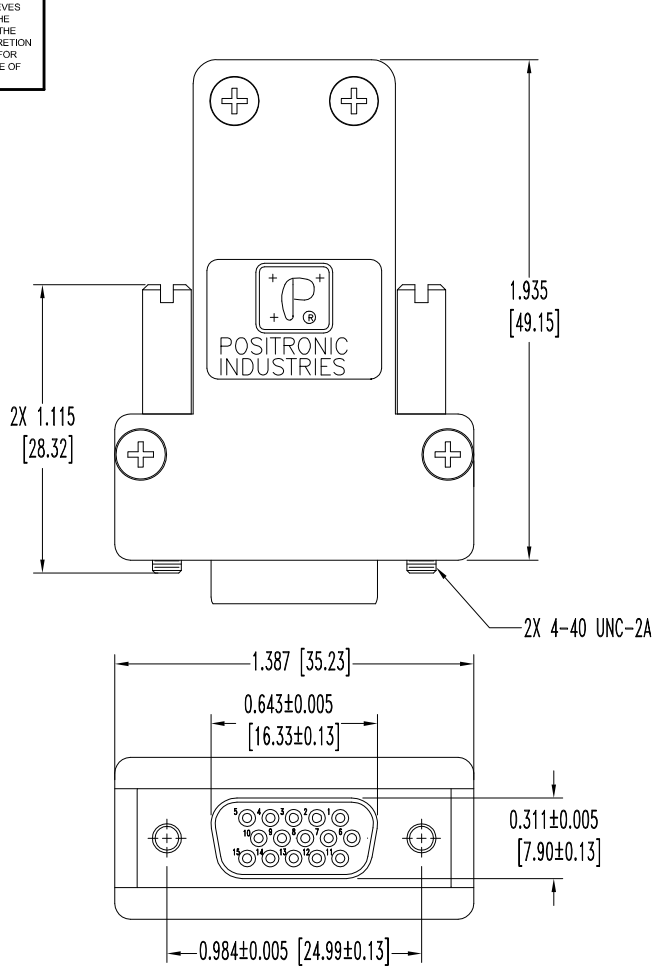


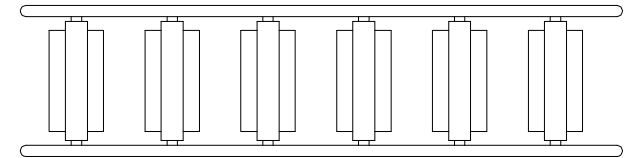
SK10230

THIS DRAWING CONTAINS INFORMATION PROPRIETARY TO POSITRONIC AND ITS SUBSIDIARIES. POSITRONIC BELIEVES THE DATA ON THIS DRAWING TO BE RELIABLE. SINCE THE TECHNICAL INFORMATION IS GIVEN FREE OF CHARGE, THE USER EMPLOYS SUCH INFORMATION AT HIS OWN DISCRETION AND RISK. POSITRONIC ASSUMES NO RESPONSIBILITY FOR RESULTS OBTAINED OR DAMAGES INCURRED FROM USE OF SUCH INFORMATION IN WHOLE OR IN PART.

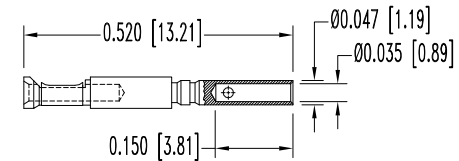
DATE	REV	REVISION RECORD	APP	DR	CK
1-19-09	NC	ECO 30497	RCW	YK	TK
3-30-10	A	ECO 32307	COLE	ME	COLE



TYPICAL INSERT



INSERT TREE ASSEMBLY



FEMALE CONTACT

15X (ENLARGED)

NOTES:

1. MATERIALS AND FINISHES:

INSULATOR: GLASS FILLED POLYESTER PER ASTM D5927, UL 94V-0, BLUE COLOR.

CONTACTS: BRASS, GOLD FLASH OVER NICKEL FINISH.

SHELLS: STEEL, TIN PLATE.

HOOD: COMPOSITE, CONDUCTIVE VOLUME RESISTIVITY (1.0 OHM-cm MAX.), UL94V-0.

ATTENUATION: 40+ DECIBELS.

JACKSCREWS: STEEL, ZINC PLATE WITH CHROMATE SEAL.

SCREWS: STAINLESS STEEL, PASSIVATED.

2. DETAILED PRODUCT, ELECTRICAL, AND MECHANICAL INFORMATION IS AVAILABLE

IN THE LATEST HIGH DENSITY D-SUB PRODUCT PUBLICATION. VISIT CONNECTPOSITRONIC.COM/PRODUCTS/59/HIGHDENSITYD-SUBMINIATURE OR CONNECTPOSITRONIC.COM.

3. DIMENSIONS ARE IN INCHES [MILLIMETERS].

		POSITRONIC INDUSTRIES INC. www.connectpositronic.com		FSCM 28198
		DD SERIES	SCALE N.T.S.	DRAWN BY YK
DECIMAL TOL. ± 0.015 [0.38]	TITLE DD15S10Z0X		APPROVED BY R WILLIAMS	
ANGULAR TOL. ± 5°	DATE 1-19-09	DRAWING NUMBER SK10230	REV. A	