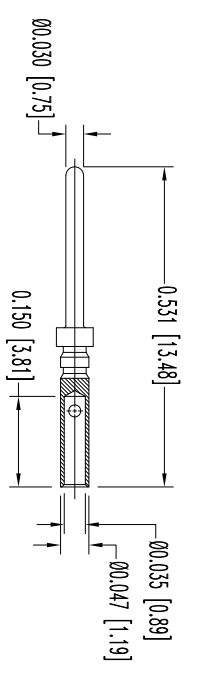
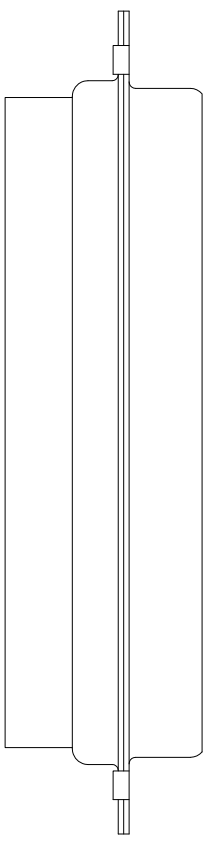
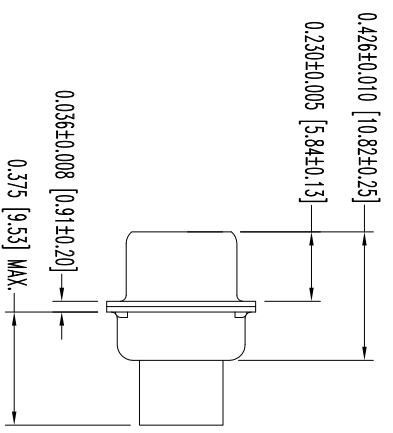
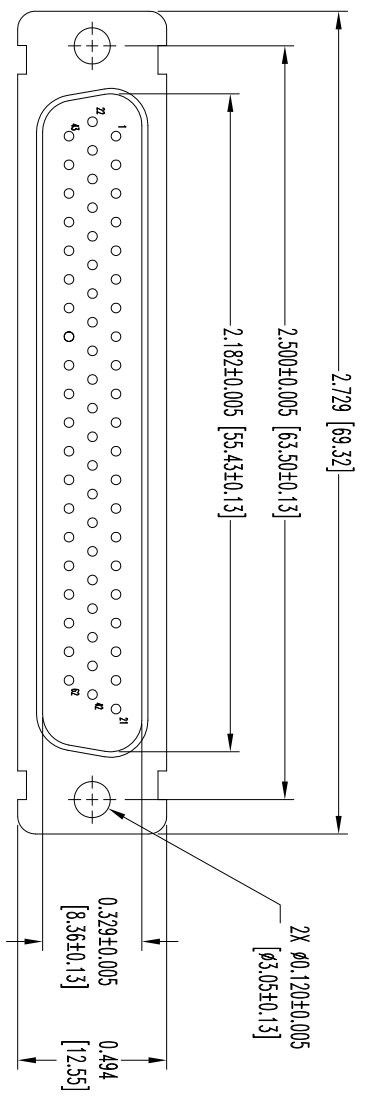


THIS DRAWING CONTAINS INFORMATION PROPRIETARY TO POSITRONIC AND IS SUBJECT TO THE SUPPLYING BELIEFS THEREON. POSITRONIC ASSUMES NO LIABILITY FOR THE TECHNICAL INFORMATION IS GIVEN FREE OF CHARGE. THE USER EMPLOY'S SUCH INFORMATION AT HIS OWN DISCRETION AND POSITRONIC ASSUMES NO LIABILITY FOR ANY RESULTS OBTAINED OR DAMAGES INCURRED FROM USE OF SUCH INFORMATION IN WHOLE OR IN PART.

SK16069

DATE	REV	REVISION RECORD	APP	DR	CK
4-25	NC	ECO 43054	TK	BS	COLB



62X MALE CONTACT
ENLARGED

NOTES:
1. MATERIALS AND FINISHES:

- INSULATOR: GLASS FILLED POLYESTER PER ASTM-D5927, UL 94V-0, COLOR: BLUE.
- CONTACTS: PRECISION MACHINED COPPER ALLOY, GOLD FLASH OVER NICKEL PLATE.
- SHELLS: STAINLESS STEEL, PASSIVATED.
- 2. DETAILED PRODUCT, MECHANICAL, AND ELECTRICAL INFORMATION IS AVAILABLE IN THE LATEST HIGH DENSITY D-SUB PRODUCT PUBLICATION. VISIT CONNECTPOSITRONIC.COM/PRODUCTS/59/HIGHDENSITY-D-SUBMINIATURE OR CONNECTPOSITRONIC.COM.
- 3. CONNECTORS ARE ROHS COMPLIANT PER CURRENT ROHS DIRECTIVE.
- 4. DIMENSIONS ARE IN INCHES [MILLIMETERS].



POSITRONIC INDUSTRIES INC.
www.connectpositronic.com
FSCM 28198

DECIMAL TOL. ± 0.015 [0.38]	SCALE N.T.S.	DRAWN BY B SHELLADY
ANGULAR TOL. ± 5°	DD SERIES	APPROVED BY TK
DATE 4-25-14	TITLE DD62M1000S/AA	REV. NC
	DRAWING NUMBER SK16069	