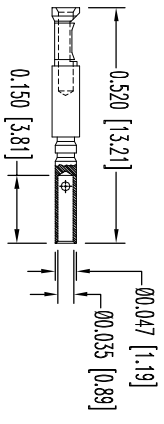
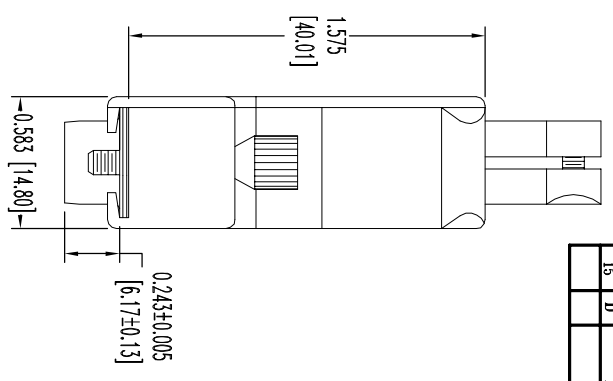
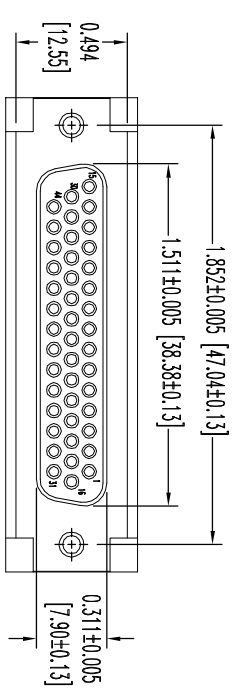
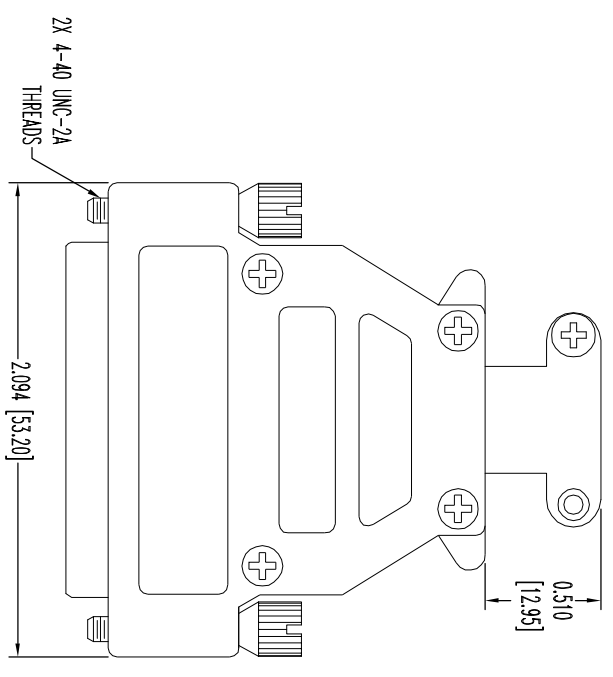


THIS DRAWING CONTAINS INFORMATION PROPRIETARY TO POSITRONIC AND ITS SUBSIDIARIES. POSITRONIC BELIEVES THAT THE INFORMATION CONTAINED HEREIN IS UNPUBLISHED TECHNICAL INFORMATION AND IS NOT TO BE REPRODUCED OR TRANSMITTED IN ANY FORM OR BY ANY MEANS, ELECTRONIC OR MECHANICAL, INCLUDING PHOTOCOPYING, RECORDING, OR BY ANY INFORMATION STORAGE AND RETRIEVAL SYSTEM, WITHOUT THE WRITTEN PERMISSION OF POSITRONIC. THE USER BURN-O'S SUCH INFORMATION AT HIS OWN DISCRETION. POSITRONIC ASSUMES NO LIABILITY FOR DAMAGES OF ANY KIND, DIRECT OR INDIRECT, ARISING FROM THE USE OF SUCH INFORMATION IN WHOLE OR IN PART.



44X FEMALE CONTACT
ENLARGED

NOTES:

1. MATERIALS AND FINISHES:
INSULATOR: GLASS FILLED POLYESTER PER ASTM D5927, UL 94V-0, BLUE COLOR.
CONTACTS: BRASS, GOLD FLASH OVER NICKEL FINISH.
SHELLS: STEEL, ZINC PLATE WITH CHROMATE SEAL.
HOOD AND CABLE CLAMPS: ZINC, DIE CAST.
JACKSCREWS: STEEL, NICKEL PLATE.
CABLE CLAMP SCREWS AND COVER SCREWS: STEEL, NICKEL PLATE.
2. DETAILED PRODUCT, ELECTRICAL, AND MECHANICAL INFORMATION IS AVAILABLE IN THE LATEST HIGH DENSITY D-SUB PRODUCT PUBLICATION. VISIT CONNECTPOSITRONIC.COM/PRODUCTS/59/HIGHDENSITY-D-SUBMINIATURE OR CONNECTPOSITRONIC.COM.
3. DIMENSIONS ARE IN INCHES [MILLIMETERS].

DATE	REV	REVISION RECORD	APP	DR	CK
1-21-09	NC	ECO 30503	RCW	YK	TK
4-19	A	ECO 32359	COLB	ME	SY
5-1	B	ECO 46767	COLB	AM	COLB

SK10255



POSITRONIC INDUSTRIES INC.
www.connectpositronic.com

FSC# 28198

DECIMAL TOL. ± 0.015 [0.38]	ANGULAR TOL. ± 5°	DATE 1-21-09	DRAWING NUMBER SK10255	REV. B
TITLE DD SERIES	SCALE N.T.S.	DRAWN BY YK	APPROVED BY R WILLIAMS	
DD44S10GE0				