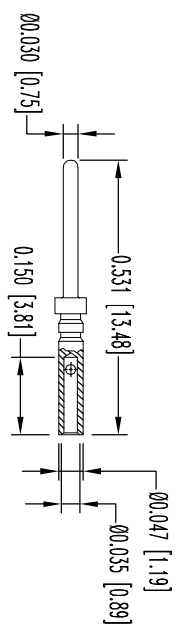
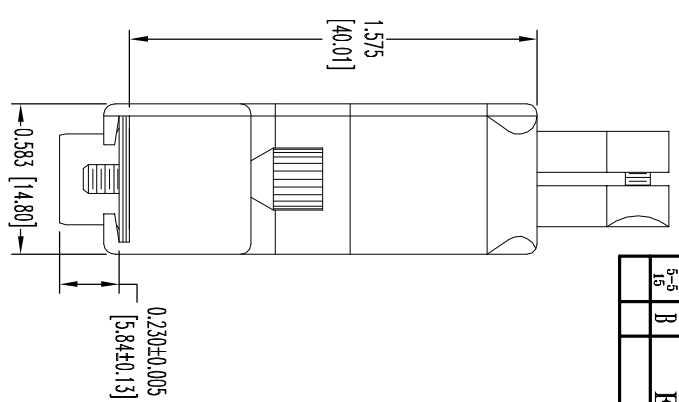
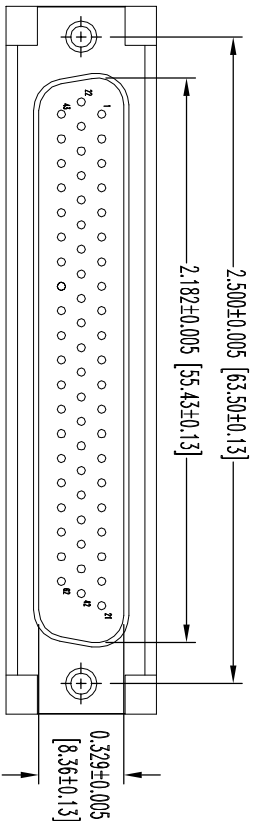
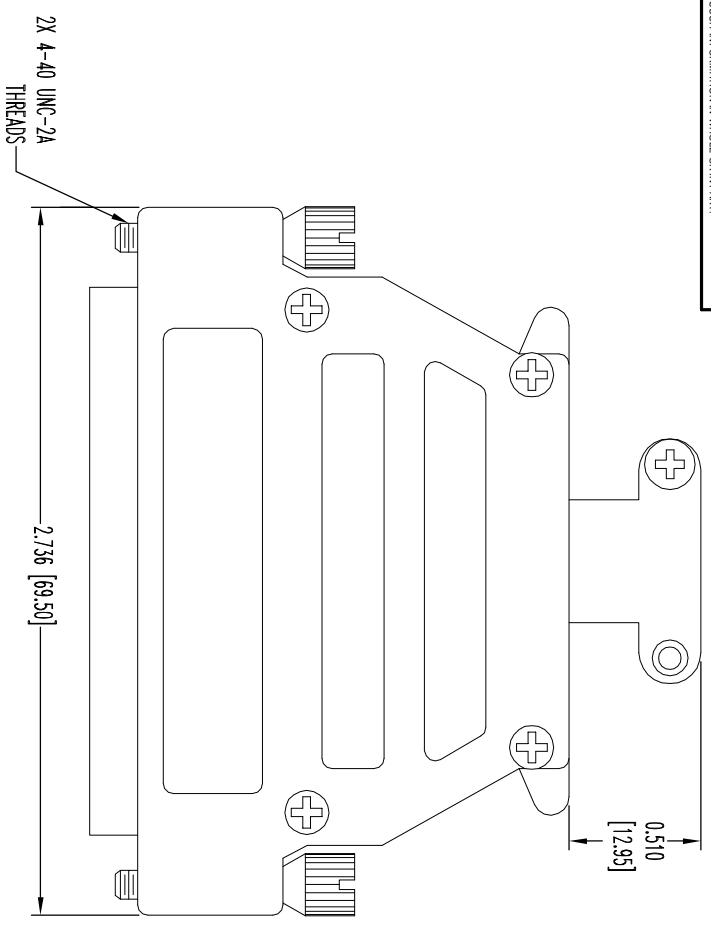


THIS DRAWING CONTAINS INFORMATION PROPRIETARY TO CONNECT POSITRONIC, AND ITS SUBSIDIARIES. POSITRONIC BELIEVES THAT THE INFORMATION CONTAINED HEREIN IS UNPUBLISHED TECHNICAL INFORMATION AND IS NOT TO BE REPRODUCED OR USED BY ANY OTHER PERSON OR ENTITY WITHOUT THE WRITTEN CONSENT OF CONNECT POSITRONIC. THE USER BUREAU'S SUCH INFORMATION AT HIS OWN DISCRETION. THE USER BUREAU'S ASSUMES ALL LIABILITY FOR THE USE OF THIS INFORMATION IN WHOLE OR IN PART.



MALE CONTACT
62X (ENLARGED)

NOTES:

1. MATERIALS AND FINISHES:

INSULATOR: GLASS FILLED POLYESTER PER ASTM D5927, UL 94V-0, BLUE COLOR.
CONTACTS: PRECISION MACHINED HIGH TENSILE COPPER ALLOY, GOLD FLASH OVER NICKEL PLATE.
SHEETS: STEEL, ZINC PLATE WITH CHROMATE SEAL.
HOOD AND CABLE CLAMPS: ZINC, DIE CAST.
JACKSCREWS: STEEL, NICKEL PLATE.
SCREWS: STEEL, NICKEL PLATE.

2. DETAILED PRODUCT, ELECTRICAL, AND MECHANICAL INFORMATION IS AVAILABLE

IN THE LATEST HIGH DENSITY D-SUB PRODUCT PUBLICATION. VISIT
CONNECTPOSITRONIC.COM/PRODUCTS/59/HIGHDENSITYD-SUBMINIATURE
OR CONNECTPOSITRONIC.COM.

3. DIMENSIONS ARE IN INCHES [MILLIMETERS].

DATE	REV	REVISION RECORD	APP	DR	CK
11-29-06	06	ECO 27101	RCW	YK	COLB
4-22-10	A	ECO 32367	COLB	ME	SY
5-9-13	B	ECO 46788	COLB	AM	COLB

SK8175



POSITRONIC INDUSTRIES INC.
www.connectpositronic.com

FSC# 28198

DECIMAL TOL. ± 0.015 [0.38]	ANGULAR TOL. ± 5°	SCALE N.T.S.	DRAWN BY YK
TITLE DD SERIES		APPROVED BY RCW	REV. B
DATE 11-29-06		DRAWING NUMBER SK8175	
DD62M10GE0			